

## Series 350 - Ratings

SHAFT SIZE	BASIC DYNAMIC RATING	BASIC STATIC RATING	BEARING RADIAL LOAD CAPACITY IN POUNDS BASED ON L-10 LIFE OF 500 HOURS AND STEADY LOAD CONDITIONS (2500 HOURS AVERAGE LIFE)							
			BEARING SPEED – REVOLUTIONS PER MINUTE (RPM)							
			100	500	1,000	1,500	2,000	2,500	3,000	3,500
1	4,380	2,570	3,040	1,780	1,410	1,230	1,120	1,040	980	930
1-3/16	5,780	3,490	4,010	2,350	1,860	1,630	1,480	1,360	1,290	—
1-7/16	7,340	4,470	5,100	2,980	2,370	2,070	1,880	1,750	1,650	—
1-1/2	7,900	5,140	5,480	3,210	2,540	2,220	2,020	1,880	—	—
1-11/16, 1-3/4	7,890	5,220	5,480	3,200	2,540	2,220	2,020	1,870	—	—
1-15/16, 2	9,750	6,600	6,770	3,960	3,140	2,740	2,490	—	—	—
2-3/16, 2-1/4	11,790	8,150	8,190	4,790	3,800	3,320	3,020	—	—	—
2-7/16, 2-1/2	13,970	10,060	9,700	5,670	4,500	3,930	—	—	—	—
2-11/16	14,840	11,220	10,300	6,020	4,780	4,170	—	—	—	—
2-15/16, 3	17,410	13,170	12,090	7,070	5,610	4,900	—	—	—	—
3-7/16, 3-1/2	21,560	16,300	14,970	8,750	6,950	6,070	—	—	—	—

For ultimate life, snug fit or light press on shaft should be used.

Maximum recommended speeds - 1" and smaller 3500 RPM

1-3/16" - 1-7/16" 3000 RPM

1-1/2" - 1-3/4" 2500 RPM

1-15/16" - 2-1/4" 2000 RPM

2-7/16" and larger 1800 RPM

Recommended operating temperature range - 25° to + 225°F.

For applications not covered in the table above, consult factory engineering.

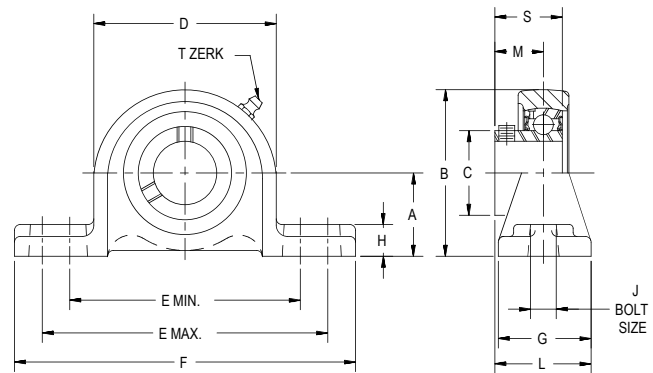
TO MODIFY THE ABOVE RATINGS FOR OTHER L-10 LIFE REQUIREMENTS OR FOR SHOCK LOADS MULTIPLY THE ABOVE RATINGS BY THE FACTOR FROM THIS CHART MODIFICATION FACTORS FOR L-10 SERVICE LIFE AND LOAD CONDITIONS:														
LOAD CONDITIONS	L-10 LIFE (HOURS)													
	500	700	1,000	1,500	2,000	3,000	4,000	5,000	7,000	10,000	15,000	20,000	30,000	50,000
Steady Load	1.00	.894	.794	.694	.630	.550	.500	.464	.415	.368	.322	.292	.255	.215
Light Shock	.90	.804	.715	.624	.567	.495	.450	.418	.373	.331	.290	.263	.230	.194
Moderate Shock	.70	.626	.556	.485	.441	.385	.350	.325	.290	.258	.225	.205	.179	.151

# Hub City™ IndustrialLine™ Bearing Units

## Hub-Alloy™ Material Pillow Blocks

### Series PB350H

- Relube type. Prelubricated at factory
- Setscrew locking
- Self-aligning replacement bearing
- Nitrile rubber seals with steel trash guard
- Precision bored HUB-ALLOY™ material housing
- Higher strength and greater impact resistance than gray iron for high shock loads



SHAFT SIZE	DIMENSIONS													WT. LBS.
	A	B	C	D	E MIN.	E MAX.	F	G	H	J	L	M	S	
1	1.688	3.156	1.59	2.938	4.250	5.125	6.063	1.500	0.688	0.500	1.53	0.774	1.154	2.0
1-3/16	1.875	3.563	1.85	3.375	4.625	5.500	6.438	1.500	0.625	0.500	1.67	0.917	1.278	2.8
1-7/16	2.125	4.000	2.06	3.750	5.063	6.313	7.375	1.750	0.688	0.500	1.82	0.940	1.420	4.3
1-1/2	2.313	4.313	2.30	4.000	5.563	6.688	7.875	2.000	0.813	0.625	1.96	0.956	1.436	5.1
1-3/4	2.313	4.438	2.46	4.250	5.813	6.688	7.875	2.125	0.875	0.625	2.11	1.044	1.544	5.3
1-15/16, 2	2.500	4.844	2.71	4.688	6.063	7.438	8.625	2.375	0.875	0.625	2.29	1.104	1.654	6.6
2-3/16, 2-1/4	2.750	5.344	2.98	5.188	6.688	7.813	9.250	2.625	0.938	0.750	2.63	1.319	1.909	8.6
2-7/16, 2-1/2	3.000	5.938	3.43	5.875	7.438	8.563	10.000	2.875	0.938	0.750	2.89	1.455	2.045	12.4
2-11/16	3.500	6.563	3.64	6.125	8.313	9.688	11.313	3.000	1.000	0.875	3.04	1.537	2.137	15.3
2-15/16, 3	3.500	6.750	3.92	6.500	8.313	9.688	11.313	3.125	1.000	0.875	3.11	1.544	2.264	15.8
3-7/16, 3-1/2	4.000	7.688	4.39	7.375	9.688	12.563	14.188	3.500	1.188	0.875	3.31	1.560	2.360	23.3

Part Numbers are specified by "PB350H" and Bore Size.  
Example: PB350H x 2-7/16.

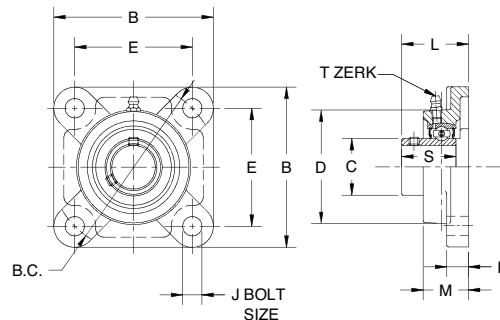
For replacement inserts use B350 bearing inserts, see Page I-41.  
T-Zerk: 1/4-28 Taper

For Load Ratings, see Page I-37. For Comparison Charts, see Page I-45.

### Hub-Alloy™ Material Flange Blocks

#### Series FB350H

- Relube type. Prelubricated at factory
- Setscrew locking
- Self-aligning replacement bearing
- Nitrile rubber seals with steel trash guard
- Precision bored HUB-ALLOY™ material housing
- Higher strength and greater impact resistance than gray iron for high shock loads



SHAFT SIZE	DIMENSIONS											WT. LBS.
	B	B.C.	C	D	E	H	J	L	M	S		
1	4.25	4.596	1.59	3.19	3.250	0.51	0.438	1.483	1.18	1.154	3.0000	
1-3/16	4.61	5.125	1.85	3.62	3.625	0.56	0.500	1.665	1.34	1.278	4.2000	
1-7/16	5.12	5.656	2.06	4.09	4.000	0.56	0.500	1.767	1.50	1.420	5.4000	
1-1/2	5.39	5.834	2.30	4.25	4.125	0.56	0.500	1.822	1.57	1.436	5.8000	
1-3/4	5.63	6.187	2.46	4.45	4.375	0.56	0.500	1.950	1.57	1.544	7.0000	
1-15/16, 2	6.38	7.250	2.71	4.92	5.125	0.79	0.625	2.128	1.73	1.654	9.2000	
2-3/16, 2-1/4	6.89	7.954	2.98	5.31	5.625	0.79	0.625	2.461	1.93	1.909	12.1000	
2-7/16, 2-1/2	7.36	8.308	3.43	6.10	5.875	0.83	0.625	2.764	2.32	2.045	15.4000	
2-11/16	7.75	8.485	3.64	6.38	6.000	0.94	0.750	2.994	2.36	2.137	18.3000	
2-15/16, 3	7.75	8.485	3.92	6.77	6.000	0.94	0.750	3.119	2.68	2.264	19.0000	
3-7/16, 3-1/2	8.42	9.546	4.39	7.68	6.750	0.94	0.750	3.135	2.75	2.360	22.2000	

Part Numbers are specified by "FB350H" and Bore Size.  
Example: FB350H x 2-7/16.

For Load Ratings, see Page I-37. For Comparison Charts, see Page I-46.  
For replacement inserts use B350 bearing inserts, see Page I-41.  
T-Zerk: 1/4-28 Taper

DOWNLOAD AVAILABLE CAD MODELS AT: WWW.HUBCITYINC.COM

DIMENSIONS SHOWN ARE FOR REFERENCE ONLY.

Certified prints are available upon request

For Lubrication and Mounting Instructions, Refer to section M

EMAIL: hubsales@regalbelloit.com • www.regalbelloit.com

