

# Hub City™ Worm Gear Drives

## Double Reduction

### PowerCubeX® Worm Speed Reducer Catalog Ratings

#### 3000 Series • GW180 Primary • 300 Secondary

SERIES	INPUT RPM	UNIT RATIO	OUTPUT RPM	PRIM. RATIO	SEC. RATIO	ALL	CONVENTIONAL OIL		PAO SYNTHETIC OIL		PAG SYNTHETIC OIL	
						INPUT HP	EFF. %	OUTPUT TORQUE	EFF. %	OUTPUT TORQUE	EFF. %	OUTPUT TORQUE
3000	1750	50	35.0	5	10	2.42	68.4	2973	76.8	3340	81.7	3552
		75	23.3	5	15	1.90	65.3	3357	73.4	3772	78.0	4010
		100	17.5	5	20	1.66	62.3	3711	70.0	4170	74.4	4433
		150	11.7	10	15	1.08	61.4	3566	68.9	4007	73.3	4260
		200	8.75	10	20	0.94	58.0	3944	65.2	4431	69.3	4712
		250	7.00	10	25	0.81	55.3	4047	62.2	4547	66.1	4835
		300	5.83	20	15	0.61	55.5	3659	62.3	4111	66.3	4371
		400	4.38	20	20	0.54	52.1	4049	58.5	4549	62.2	4837
		500	3.50	25	20	0.45	50.2	4049	56.4	4549	60.0	4837
		600	2.92	20	30	0.43	46.8	4313	52.6	4846	55.9	5153
		750	2.33	25	30	0.35	45.0	4313	50.6	4846	53.7	5153
		900	1.94	30	30	0.32	41.8	4313	47.0	4846	50.0	5153
		1000	1.75	50	20	0.27	42.0	4049	47.2	4549	50.2	4837
		1200	1.46	40	30	0.25	39.5	4313	44.4	4846	47.2	5153
		1500	1.17	50	30	0.214	37.3	4313	42.0	4846	44.6	5153
		1800	0.97	60	30	0.192	34.6	4313	38.9	4846	41.3	5153
		2000	0.88	50	40	0.184	32.8	4334	36.8	4870	39.1	5178
2400	0.73	60	40	0.166	30.3	4334	34.0	4870	36.2	5178		
3000	0.58	60	50	0.139	27.6	4134	31.0	4645	33.0	4939		
3600	0.49	60	60	0.121	25.1	3924	28.2	4409	29.9	4688		

Worm Gear Drives



#### 3200 Series • 210 Primary • 320 Secondary

SERIES	INPUT RPM	UNIT RATIO	OUTPUT RPM	PRIM. RATIO	SEC. RATIO	ALL	CONVENTIONAL OIL		PAO SYNTHETIC OIL		PAG SYNTHETIC OIL	
						INPUT HP	EFF. %	OUTPUT TORQUE	EFF. %	OUTPUT TORQUE	EFF. %	OUTPUT TORQUE
3200	1750	50	35.0	5	10	2.86	69.5	3582	78.1	4025	83.0	4279
		75	23.3	5	15	2.45	65.8	4343	73.9	4880	78.6	5188
		100	17.5	5	20	1.96	63.3	4472	71.2	5025	75.7	5342
		150	11.7	10	15	1.39	61.8	4654	69.4	5229	73.8	5560
		200	8.75	10	20	1.12	59.2	4766	66.5	5355	70.7	5694
		250	7.00	10	25	0.94	56.8	4833	63.9	5430	67.9	5774
		300	5.83	20	15	0.79	56.1	4794	63.0	5387	67.0	5727
		400	4.38	20	20	0.63	53.6	4898	60.2	5503	64.0	5851
		500	3.50	25	20	0.53	51.8	4898	58.2	5503	61.9	5851
		600	2.92	20	30	0.55	46.6	5560	52.4	6247	55.7	6642
		750	2.33	25	30	0.46	44.9	5560	50.5	6247	53.7	6642
		900	1.94	30	30	0.40	42.6	5560	47.9	6247	50.9	6642
		1000	1.75	50	20	0.31	43.9	4898	49.3	5503	52.4	5851
		1200	1.46	40	30	0.33	39.5	5560	44.4	6247	47.2	6642
		1500	1.17	50	30	0.27	37.6	5560	42.2	6247	44.9	6642
		1800	0.97	60	30	0.25	34.6	5560	38.9	6247	41.4	6642
		2000	0.88	50	40	0.211	34.5	5247	38.8	5896	41.2	6268
2400	0.73	60	40	0.193	31.4	5247	35.3	5896	37.5	6268		
3000	0.58	60	50	0.160	28.9	5008	32.5	5627	34.6	5983		
3600	0.49	60	60	0.134	26.9	4665	30.2	5242	32.1	5573		

ADDITIONAL RATINGS FOR OTHER INPUT SPEEDS ARE AVAILABLE AT: [WWW.HUBCITYINC.COM](http://WWW.HUBCITYINC.COM)

#### OVERHUNG LOAD AND THRUST LOAD INFORMATION

OVERHUNG LOAD - LOW SPEED SHAFT — MODELS 3001 AND 3004 1,150 LBS. AT CENTER POINT OF SHAFT EXTENSION. MODELS 3002 AND 3005 NOT APPLICABLE. THRUST± UP OR DOWN 1,725 LBS.

MODELS 3201 AND 3204 1,100 LBS. AT CENTER POINT OF SHAFT EXTENSION. MODELS 3202 AND 3205 NOT APPLICABLE.

MODELS 3207 AND 3208 — OHL\* 1,280 LBS., TO\* THRUST OUT 1,700 LBS. AND TI± THRUST IN 1,210 LBS. THRUST± UP OR DOWN 1,200 LBS.

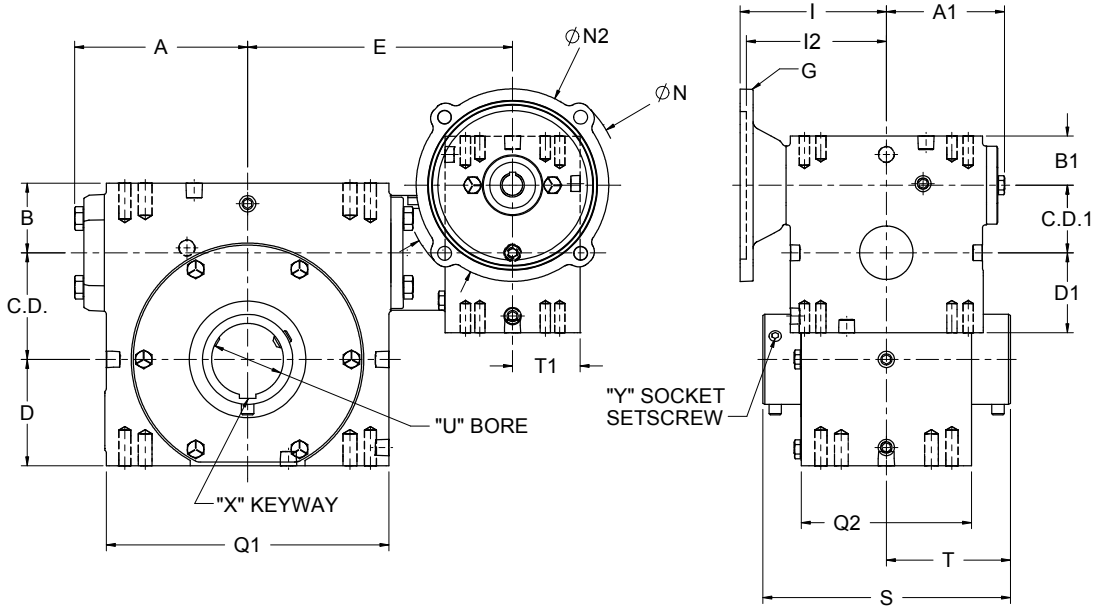
±OHL AND THRUST VALUES SHOWN ARE INDEPENDENT FUNCTIONS AND CANNOT BE APPLIED SIMULTANEOUSLY. REFER APPLICATIONS WITH COMBINED OHL AND THRUST TO REGAL CUSTOMER SERVICE DEPARTMENT.

OUTPUT TORQUE VALUES SHOWN ARE INCH-POUNDS (IN-LB).

# Hub City™ Worm Gear Drives

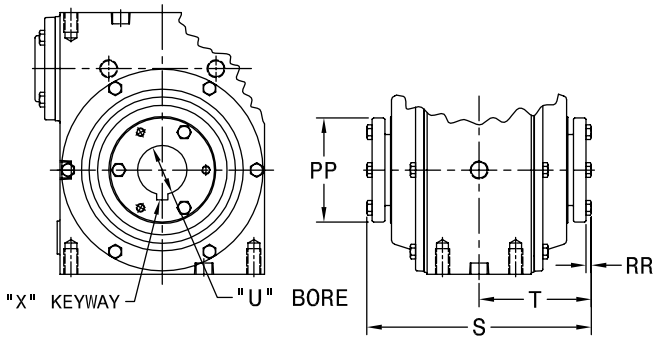
## Double Reduction Models

1305, 1505, 1805, 2105, 2405, 2605, 3005, 3205, 3805, 4205, 4505, 5205, GW6005, GW7005, GW8005, GW10005



SPECIAL, METRIC AND SAE HYDRAULIC INPUT FLANGES AVAILABLE. CONSULT FACTORY FOR COMPLETE SPECIFICATIONS.

### QD™ Bushing Detail for Models 4505 & 5205



FOR LUBRICATION AND INSTALLATION INSTRUCTIONS REFER TO SECTION M.

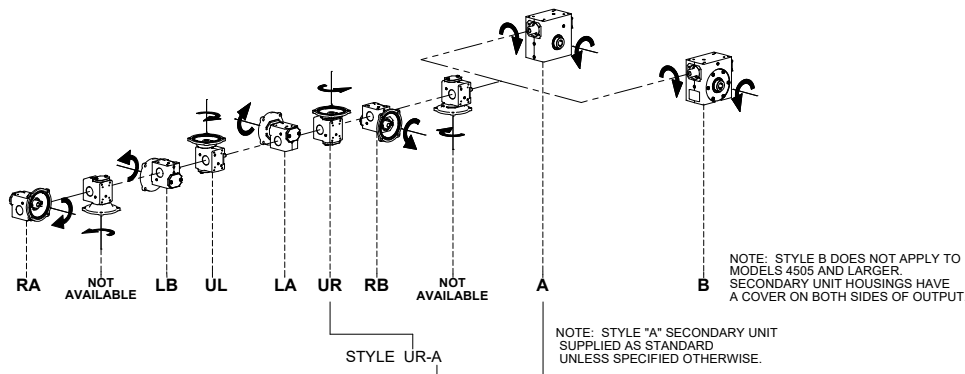
SHAFT MOUNTED UNITS REQUIRE TORQUE ARMS. TORQUE ARM KITS ARE AVAILABLE. SEE PAGE B-105.

DIMENSIONS SHOWN ARE FOR REFERENCE ONLY. DOWNLOAD AVAILABLE CAD MODELS AT: [WWW.HUBCITYINC.COM](http://WWW.HUBCITYINC.COM)

CONSULT FACTORY FOR VERTICAL SHAFT LUBRICATION RECOMMENDATIONS.

INPUT SHAFT CAN BE ROTATED IN EITHER DIRECTION.

### Standard Styles Available



# Hub City™ Worm Gear Drives

## Double Reduction Models

1305, 1505, 1805, 2105, 2405, 2605, 3005, 3205, 3805, 4205, 4505, 5205, GW6005, GW7005, GW8005, GW10005

MODEL	PRIMARY	SECONDARY	C.D.	A	B	D	Q1	Q2
1305	134	135-56C	1.334	2.61	1.186	1.562	4.12	3.12
1505	GW134	155	1.541	3.14	1.928	1.906	4.88	3.44
1805	134	185-56C	1.751	3.23	1.374	1.875	5.16	3.44
2105	134	215-56C	2.064	3.61	1.500	2.437	5.88	4.12
2405	GW134	245	2.376	3.77	2.061	2.500	6.12	4.06
2605	134	265-56C	2.626	4.33	1.874	2.938	7.20	4.50
3005	GW184	305	3.001	4.84	2.624	3.250	8.12	5.25
3205	214	325-143TC	3.251	5.28	2.124	3.250	8.62	5.20
3805	214	385-143TC	3.751	4.90	2.374	3.937	9.60	5.62
4205	GW214	425	4.251	6.10	2.686	4.438	10.25	6.13
4505	324	455-213TC	4.501	5.23	2.499	4.625	9.25	4.63
5205	324	525-213CT	5.168	5.98	2.624	5.375	10.75	5.06
GW6005	GW324	GW602	6.000	N/A	4.000	6.500	14.25	8.13
GW7005	GW324	GW702	7.000	N/A	4.320	7.590	14.88	7.63
GW8005	GW424	GW802	8.000	N/A	4.100	8.860	17.00	8.63
GW10005	GW454	GW1002	10.000	N/A	5.110	10.360	20.88	9.53

MODEL	E	T1	C.D.1	A1	B1	D1	WT. LBS.
1305	4.87	1.56	1.334	2.61	1.186	1.562	22
1505	5.85	1.84	1.334	2.61	1.610	1.720	26
1805	5.50	1.56	1.334	2.61	1.186	1.562	26
2105	5.87	1.56	1.334	2.61	1.186	1.562	36
2405	6.44	1.84	1.334	2.61	1.610	1.720	52
2605	6.58	1.56	1.334	2.61	1.186	1.562	48
3005	7.86	1.78	1.750	3.24	1.940	2.060	81
3205	8.09	2.06	2.064	3.61	1.500	2.437	90
3805	8.61	2.06	2.064	3.61	1.500	2.437	115
4205	9.18	1.91	2.060	3.61	2.020	2.280	135
4505	9.14	2.60	3.251	5.28	2.124	3.250	181
5205	9.89	2.60	3.251	5.28	2.124	3.250	209
GW6005	13.30	2.88	3.250	5.02	2.630	3.500	406
GW7005	12.96	2.88	3.250	5.02	2.630	3.500	482
GW8005	13.94	3.07	4.250	6.10	2.690	4.440	728
GW10005	17.05	3.60	5.250	7.50	3.630	5.120	1151

### Stock Output Bores

MINIMUM AND MAXIMUM BORE DIMENSIONS SHOWN.  
FOR ADDITIONAL STOCK OUTPUT BORE SIZES AND  
STOCK QD™ BUSHING KITS AVAILABLE SEE PAGE B-96.

MODEL	U (MIN.)	U (MAX.)	S	T
1305	N/A	5/8	4.50	2.25
1505	N/A	5/8	5.42	2.71
1805	15/16	1	4.81	2.41
2105	15/16	1-1/2	5.56	2.78
2405	1	1-1/2	6.00	3.00
2605	1	1-1/2	5.93	2.97
3005	1-3/16	2-3/16	7.50	3.75
3205	1-7/16	2-3/16	7.56	3.78
3805	1-7/16	2-3/16	7.56	3.78
4205	1-7/16	2-3/16	8.50	4.25
4505	QD BUSHING KIT		10.00	5.00
5205	REQUIRED		11.13	5.56
GW6005	2	3-7/16	11.50	5.75
GW7005	2-7/16	3-15/16	13.50	6.75
GW8005	3-7/16	4-7/16	14.50	7.25
GW10005	3-7/16	5-7/16	18.50	9.25

MODEL	G	I	I2	N	N2
1305	48CZ	3.46	N/A	4.36	3.87
	56C			6.63	6.50
1505	48CZ	3.46	N/A	4.36	3.87
	56C			6.63	6.50
1805	48CZ	3.46	N/A	4.36	3.87
	56C			6.63	6.50
2105	48CZ	3.46	N/A	4.36	3.87
	56C			6.63	6.50
2405	48CZ	3.46	N/A	4.36	3.87
	56C			6.63	6.50
2605	48CZ	3.46	N/A	4.36	3.87
	56C			6.63	6.50
3005	48CZ	4.09	N/A	4.36	3.87
	56C			6.63	6.50
	143TC				
3205	48CZ	4.46	N/A	4.36	3.87
	56C			6.63	6.50
	143TC				
3805	48CZ	4.46	N/A	4.36	3.87
	56C			6.63	6.50
	143TC				
4205	48CZ	4.46	N/A	4.36	3.87
	56C			6.63	6.50
	143TC				
4505	56C	6.14	N/A	6.50	6.50
	143TC				
	182TC	N/A	6.34	9.00	9.00
	213TC		6.90		
5205	56C	6.14	N/A	6.50	6.50
	143TC				
	182TC	N/A	6.34	9.00	9.00
	213TC		6.90		
GW6005	56C	6.14	N/A	6.50	6.50
	143TC				
	182TC	N/A	6.34	9.00	9.00
	213TC		6.90		
GW7005	56C	6.14	N/A	6.50	6.50
	143TC				
	182TC	N/A	6.34	9.00	9.00
	213TC		6.90		
GW8005	56C	6.45	N/A	6.50	6.50
	143TC				
	182TC	N/A	7.21	9.00	9.00
	213TC		7.77		
GW10005	56C	7.85	N/A	6.50	6.50
	143TC				
	182TC	N/A	8.61	9.00	9.00
	213TC		9.17		
	254TC	N/A			



Select hollow output bore models in this product line are now available with the HubLoc® keyless bushing system. Refer to pages i and ii at front of this catalog for features, available sizes, and ordering information.