

# Hub City™ Worm Gear Drives

## Single Reduction

### PowerCubeX® Worm Speed Reducer Catalog Ratings

#### Series 210

SERIES	INPUT RPM	RATIO	OUTPUT RPM	CONVENTIONAL OIL					PAO SYNTHETIC OIL			PAG SYNTHETIC OIL		
				MECH. INPUT HP	EFF. %	MECH. OUTPUT TORQUE	THERMAL INPUT HP	THERMAL OUTPUT TORQUE	INPUT HP	EFF. %	OUTPUT TORQUE	INPUT HP	EFF. %	OUTPUT TORQUE
210	2500	5	500	4.40	87.1	483	2.91	319	4.40	92.3	512	4.40	95.2	528
		7.5	333	3.55	86.1	578	2.17	353	3.55	91.2	612	3.55	94.1	631
		10	250	2.93	85.2	629	2.00	429	2.93	90.4	667	2.93	93.2	688
		15	167	2.19	83.0	686	1.45	454	2.19	87.9	727	2.19	90.7	750
		20	125	1.73	80.7	705	1.32	538	1.73	85.5	747	1.73	88.2	770
		25	100	1.42	79.2	707	1.19	592	1.42	83.9	749	1.42	86.5	772
		30	83.3	1.23	76.4	713	0.91	526	1.23	81.0	756	1.23	83.5	779
		40	62.5	0.97	72.5	706	0.84	611	0.97	76.9	748	0.97	79.3	772
		50	50.0	0.77	70.1	682	0.72	638	0.77	74.3	723	0.77	76.6	746
		60	41.7	0.65	65.8	651	0.61	611	0.65	69.8	690	0.65	71.9	712
	80	31.3	0.41	63.3	528	0.38	489	0.41	67.1	560	0.41	69.2	578	
	100	25.0	0.29	58.0	421	0.27	392	0.29	61.5	446	0.29	63.4	460	
	1750	5	350	3.89	86.3	605	2.80	435	3.89	91.5	641	3.89	94.4	661
		7.5	233	3.12	85.1	718	2.07	476	3.12	90.2	761	3.12	93.0	784
		10	175	2.50	84.2	758	1.91	579	2.50	89.3	803	2.50	92.0	828
		15	117	1.86	81.6	819	1.37	603	1.86	86.5	868	1.86	89.1	895
		20	87.5	1.50	79.0	839	1.25	699	1.50	83.7	890	1.50	86.3	917
		25	70.0	1.19	77.3	828	1.13	786	1.19	82.0	878	1.19	84.5	905
		30	58.3	1.06	74.2	847	0.86	680	1.06	78.7	898	1.06	81.1	926
		40	43.8	0.83	69.9	838	0.79	798	0.83	74.1	889	0.83	76.4	916
		50	35.0	0.66	67.3	798	THERMAL EQUALS MECHANICAL		0.66	71.4	846	0.66	73.6	873
		60	29.2	0.57	62.6	773			0.57	66.4	819	0.57	68.5	845
	80	21.9	0.35	60.1	607	0.35			63.7	644	0.35	65.7	664	
	100	17.5	0.25	54.5	487	0.25			57.8	516	0.25	59.5	532	
	1170	5	234	3.13	85.4	719	2.40	551	3.13	90.5	762	3.13	93.3	786
		7.5	156	2.50	84.0	849	1.58	537	2.50	89.0	900	2.50	91.8	928
		10	117	2.00	82.9	875	1.68	735	2.00	87.9	927	2.00	90.6	956
		15	78.0	1.50	79.9	940	1.29	808	1.50	84.7	996	1.50	87.3	1027
		20	58.5	1.16	77.0	961	THERMAL EQUALS MECHANICAL		1.16	81.6	1018	1.16	84.1	1050
		25	46.8	0.93	75.2	937			0.93	79.7	993	0.93	82.1	1024
		30	39.0	0.84	71.6	968			0.84	75.9	1026	0.84	78.3	1058
		40	29.3	0.66	66.9	958			0.66	70.9	1015	0.66	73.1	1047
		50	23.4	0.52	64.2	901			0.52	68.0	956	0.52	70.1	985
		60	19.5	0.46	59.1	883			0.46	62.6	936	0.46	64.6	964
	80	14.6	0.28	56.6	676	0.28	60.0	717	0.28	61.8	739			
	100	11.7	0.200	50.8	546	0.200	53.8	578	0.200	55.5	596			
	100	5	20.0	0.40	79.4	989	THERMAL EQUALS MECHANICAL		0.40	84.2	1049	0.40	86.8	1081
		7.5	13.3	0.32	77.0	1158			0.32	81.6	1228	0.32	84.1	1266
		10	10.0	0.239	75.7	1140			0.239	80.3	1208	0.239	82.7	1246
		15	6.7	0.180	71.0	1211			0.180	75.3	1284	0.180	77.6	1323
		20	5.0	0.147	66.6	1233			0.147	70.6	1307	0.147	72.8	1347
		25	4.0	0.116	64.4	1176			0.116	68.2	1246	0.116	70.3	1285
		30	3.3	0.111	59.1	1238			0.111	62.6	1313	0.111	64.6	1353
		40	2.5	0.092	53.0	1224			0.092	56.2	1297	0.092	57.9	1338
		50	2.0	0.071	50.2	1128			0.071	53.2	1195	0.071	54.9	1232
60		1.7	0.068	43.9	1127	0.068			46.6	1195	0.068	48.0	1232	
80	1.3	0.039	42.4	825	0.039	44.9	874	0.039	46.3	901				
100	1.0	0.029	36.2	672	0.029	38.4	713	0.029	39.6	735				

Worm Gear Drives



ADDITIONAL RATINGS FOR OTHER INPUT SPEEDS ARE AVAILABLE AT [WWW.REGALBELOIT.COM](http://WWW.REGALBELOIT.COM)

#### OVERHUNG LOAD AND THRUST LOAD INFORMATION

OVERHUNG LOAD - LOW SPEED SHAFT — MODELS 211 AND 214 550 LBS. AT CENTER POINT OF SHAFT EXTENSION. MODELS 212 AND 215 NOT APPLICABLE. THRUST± UP OR DOWN 600 LBS.

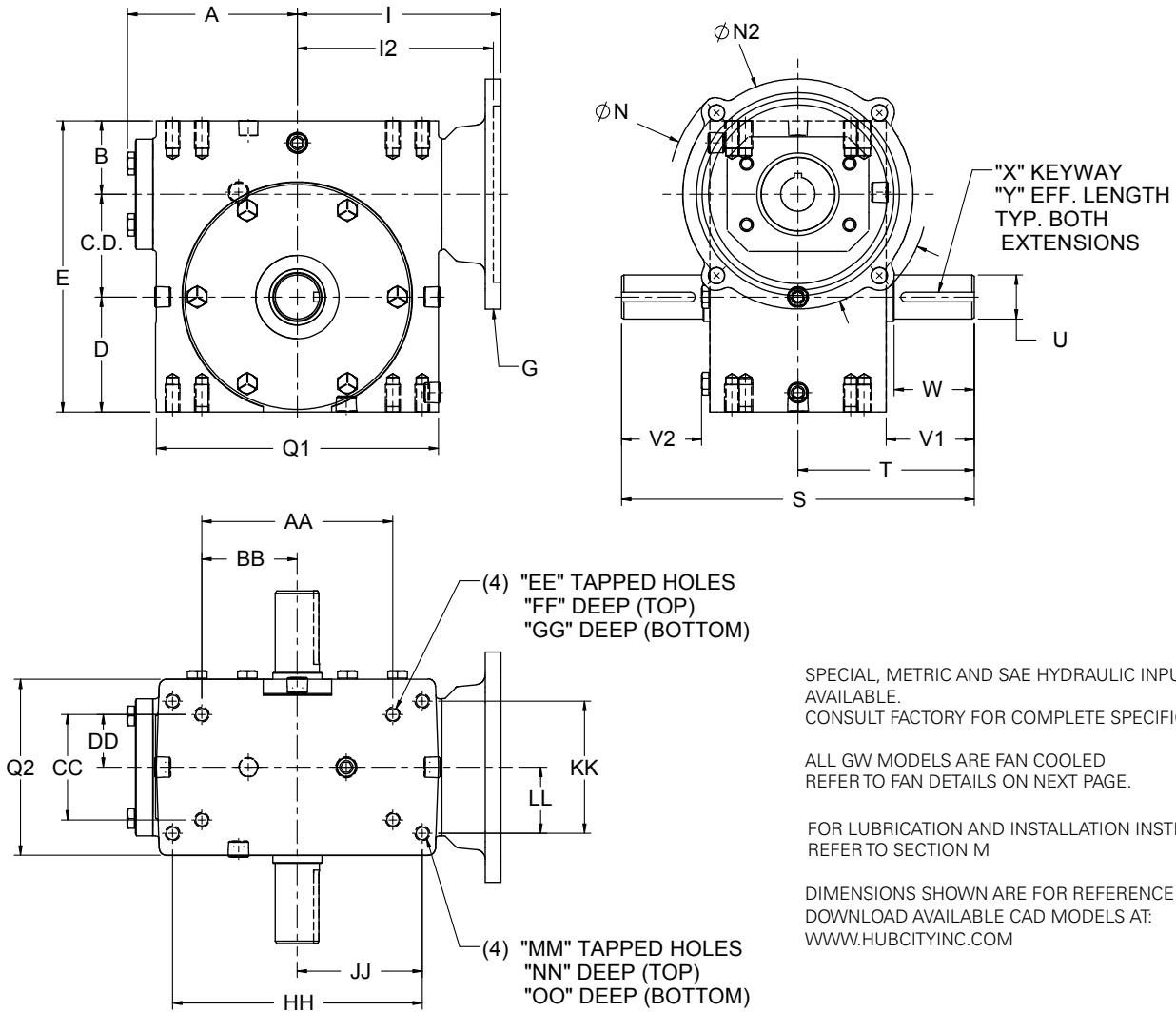
±OHL AND THRUST VALUES SHOWN ARE INDEPENDENT FUNCTIONS AND CANNOT BE APPLIED SIMULTANEOUSLY. REFER APPLICATIONS WITH COMBINED OHL AND THRUST TO REGAL CUSTOMER SERVICE DEPARTMENT.

OUTPUT TORQUE VALUES SHOWN ARE INCH-POUNDS (IN-LB).

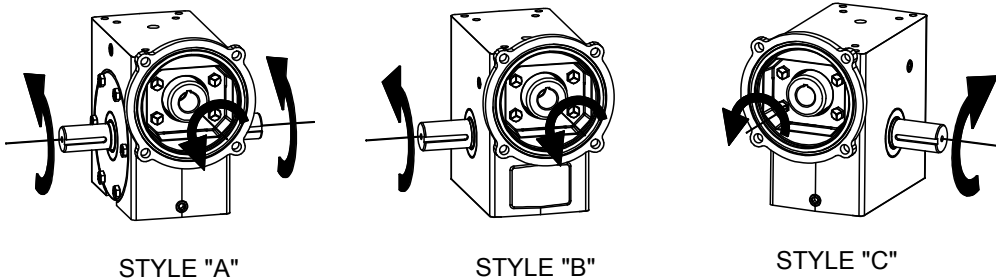
# Hub City™ Worm Gear Drives

## Single Reduction Models

134, 154, 184, 214, 244, 264, 304, 324, 384, 424, 454, 524, GW604



### Standard Styles Available



CONSULT FACTORY FOR VERTICAL SHAFT LUBRICATION RECOMMENDATIONS.  
INPUT SHAFT CAN BE ROTATED IN EITHER DIRECTION.

# Hub City™ Worm Gear Drives

## Single Reduction Models

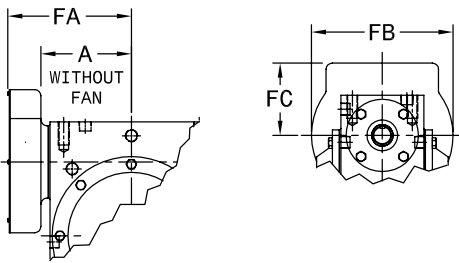
134, 154, 184, 214, 244, 264, 304, 324, 384, 424, 454, 524, GW604

MODEL	C.D.	A	B	D	E	Q1	Q2
134	1.334	2.61	1.186	1.562	4.082	4.12	3.12
154	1.541	3.14	1.928	1.906	5.375	4.88	3.44
184	1.751	3.23	1.374	1.875	5.000	5.16	3.44
214	2.064	3.61	1.500	2.437	6.000	5.88	4.12
244	2.376	3.77	2.061	2.500	6.937	6.12	4.06
264	2.626	4.33	1.874	2.938	7.438	7.20	4.50
304	3.001	4.84	2.624	3.250	8.875	8.12	5.25
324	3.251	5.28	2.124	3.250	8.625	8.62	5.20
384	3.751	4.90	2.374	3.937	10.062	9.60	5.62
424	4.251	6.10	2.686	4.438	11.375	10.25	6.13
454	4.501	5.23	2.499	4.625	11.625	9.25	4.63
524	5.168	5.98	2.624	5.375	13.167	10.75	5.06
GW604	6.000	N/A	4.000	6.500	16.500	14.25	8.13

MODEL	S	T	U	V1	V2	W	X	Y
134	6.50	3.25	.625/.624	1.69	1.53	1.60	3/16 X 3/32	1.38
154	8.62	4.31	.750/.7485	2.11	1.90	2.08	3/16 X 3/32	1.51
184	7.00	3.50	.750/.749	1.78	1.57	1.54	3/16 X 3/32	1.41
214	8.50	4.25	.875/.874	2.19	1.98	1.95	3/16 X 3/32	1.83
244	10.28	5.14	1.125/1.1235	2.66	2.44	2.62	1/4 x 1/8	1.76
264	9.00	4.50	1.250/1.249	2.25	2.04	N/A	1/4 x 1/8	1.85
304	13.50	6.75	1.250/1.2485	3.60	3.36	3.57	1/4 X 1/8	2.26
324	10.88	5.44	1.375/1.374	2.84	2.62	2.75	5/16 X 5/32	2.31
384	13.38	6.69	1.500/1.499	3.88	N/A	N/A	3/8 X 3/16	3.16
424	16.24	8.12	1.875/1.8735	4.50	4.21	4.47	1/2 X 1/4	3.06
454 **	14.50	7.25	1.625/1.624	4.18	N/A	3.90	3/8 X 3/16	3.28
524 ***	15.62	7.81	1.750/1.749	4.47	N/A	4.17	3/8 X 3/16	3.50
GW604	20.00	10.00	2.500	4.65	4.65	N/A	5/8 X 5/16 P&W	4.00

\*\* ALSO AVAILABLE WITH 1.750/1.749 (U) DIAMETER OUTPUT SHAFT. CONSULT FACTORY.  
 \*\*\* ALSO AVAILABLE WITH 2.000/1.999 (U) DIAMETER OUTPUT SHAFT. CONSULT FACTORY.

### Fan Detail for Model GW604



MODEL	A	FA	FB	FC
GW604	N/A	11.13	9.50	4.00

ALL GW MODELS ARE FAN COOLED.

MODEL	G	I	I2	N	N2		
134	48CZ	3.46	N/A	4.36	3.87		
	56C			6.63	6.50		
154	48CZ	3.99	N/A	4.36	3.87		
	56C			6.63	6.50		
	143TC						
184	48CZ	4.09	N/A	4.36	3.87		
	56C			6.63	6.50		
	143TC						
214	48CZ	4.46	N/A	4.36	3.87		
	56C			6.63	6.50		
	143TC						
244	56C	4.63	N/A	6.50	6.50		
	143TC						
	182TC			N/A	5.06	9.00	9.00
264	56C	5.19	N/A	6.50	6.50		
	143TC						
	182TC			N/A	5.81	9.00	9.00
304	56C	5.95	N/A	6.50	6.50		
	143TC						
	182TC			N/A	6.15	9.00	9.00
	213TC				6.71		
324	56C	6.14	N/A	6.50	6.50		
	143TC						
	182TC			N/A	6.34	9.00	9.00
	213TC				6.90		
384	56C	6.50	N/A	6.50	6.50		
	143TC						
	182TC			N/A	6.88	9.00	9.00
424	56C	6.45	N/A	6.50	6.50		
	143TC						
	182TC			N/A	7.21	9.00	9.00
	213TC				7.77		
	254TC						
454	56C	6.75	N/A	6.50	6.50		
	143TC						
	182TC			N/A	6.75	9.00	9.00
	213TC						
524 *	182TC	N/A	7.50	9.00	9.00		
	213TC						
	254TC						
GW604	56C	10.45	N/A	6.50	6.50		
	143TC						
	182TC			N/A	9.33	9.00	9.00
	213TC						
	254TC				9.94		

\* 56C & 143TC FLANGES AVAILABLE AS MODIFIED STANDARDS

MODEL	AA	BB	CC	DD	EE	FF	GG	HH	JJ	KK	LL	MM	NN	OO	Wt. Lbs.
134	2.250	1.125	1.625	0.813	1/4 UNC	0.50	0.50	3.250	1.625	2.000	1.000	5/16 UNC	0.50	0.50	12
154	4.188	2.094	2.750	1.375	5/16 UNC	0.63	0.63	N/A	N/A	N/A	N/A	N/A	N/A	N/A	16
184	3.125	1.563	1.625	0.813	1/4 UNC	0.50	0.50	4.188	2.094	2.750	1.375	5/16 UNC	0.63	0.63	16
214	4.000	2.000	2.000	1.000	3/8 UNC	0.50	0.70	5.000	2.500	2.875	1.438	3/8 UNC	0.70	0.70	25
244	5.000	2.500	2.875	1.438	3/8 UNC	0.69	0.69	N/A	N/A	N/A	N/A	N/A	N/A	N/A	38
264	4.875	2.438	2.688	1.344	3/8 UNC	0.70	0.70	6.375	3.188	3.375	1.688	3/8 UNC	0.70	0.70	38
304	7.000	3.500	4.000	2.000	7/16 UNC	0.88	0.88	N/A	N/A	N/A	N/A	N/A	N/A	N/A	61
324	6.250	3.125	2.750	1.375	1/2 UNC	0.75	0.75	7.500	3.750	4.000	2.000	7/16 UNC	0.88	0.88	67
384	6.875	3.438	3.000	1.500	1/2 UNC	0.94	1.00	8.500	4.250	4.750	2.375	1/2 UNC	1.00	1.00	90
424	8.500	4.250	5.000	2.500	5/8 UNC	1.00	1.00	N/A	N/A	N/A	N/A	N/A	N/A	N/A	112
454	8.125	4.063	3.250	1.625	5/8 UNC	0.88	1.13	N/A	N/A	N/A	N/A	N/A	N/A	N/A	112
524	9.500	4.750	3.750	1.875	5/8 UNC	1.00	1.25	N/A	N/A	N/A	N/A	N/A	N/A	N/A	138
GW604	12.750	6.375	6.380	3.190	5/8 UNC	1.00	1.00	N/A	N/A	N/A	N/A	N/A	N/A	N/A	324