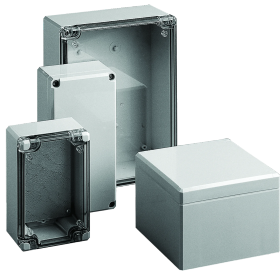


# Terminal box, 80x160x56, ABS box

## CATALOG NUMBER

**Q1686ABD**



QLine D polycarbonate and ABS enclosures have contoured bodies with flush cover screws for an attractive, contemporary appearance. Tough as well as stylish, they are functional in corrosive environments and can withstand occasional submersion. The ABS series shares the same features and similar physical properties as the polycarbonate but is a more economical, non-UL rated alternative.

## INDUSTRY STANDARDS

UL 508A Listed; Type 4, 4X, 6, 12, 13; File No. E61997

cUL Listed per CSA C22.2 No 94; Type 4, 4X, 6, 12, 13; File No. E61997

Enclosure flammability evaluated per UL 508A

Polycarbonate Enclosure

NEMA/EEMAC Type 4, 4X, 6, 12, 13

CSA File No. 42186: Type 4, 4X, 6, 12, 13

IEC 60529, IP67

ABS Enclosure

NEMA/EEMAC Type 4, 4X, 6, 12, 13

IEC 60529, IP67

## FEATURES

Body is impact-resistant polycarbonate for PCD series and ABS for ABD series

Opaque and clear covers are impact-resistant polycarbonate for PCD series and ABS for ABD series

Polycarbonate material is easily punched, drilled, filed or sawed

Straight side walls permit ganging of multiple enclosures

Cross-point captivated cover screws are stainless steel

Mounting holes molded directly adjacent to cover screws

Cover screws protected by removable caps that are aesthetic and provide tamper resistance

Molded internal pads for mounting optional panels, rails and other components

Panel mounting feature on both body and cover

Seamless foam-in-place gasket assures water-tight and dust-tight seal

Screws provided for mounting optional panel

Material is halogen free

## PRODUCT ATTRIBUTES

---

Article Number: 17179

Height (H): 3.15in

Width (W): 6.3in

Depth (D): 2.2in

Material: ABS

Finish: Smooth Gloss

Color: Light Gray

Color Code: RAL 7035

Thickness (T): 0.12in

Cover Style: Opaque

Mounting (G x H): 5.83 x 1.97in

Weight: 0.4lb

## ADDITIONAL PRODUCT DETAILS

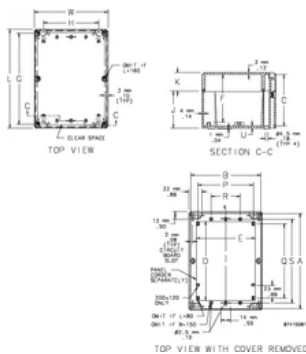
---

A x B x C are internal dimensions.

Purchase panels separately.

## DIAGRAMS

---



## WARNING

---

nVent products shall be installed and used only as indicated in nVent's product instruction sheets and training materials. Instruction sheets are available at [www.nvent.com](http://www.nvent.com) and from your nVent customer service representative. Improper installation, misuse, misapplication or other failure to completely follow nVent's instructions and warnings may cause product malfunction, property damage, serious bodily injury and death and/or void your warranty.



Our powerful portfolio of brands:

**CADDY ERICO HOFFMAN ILSCO SCHROFF TRACHTE**