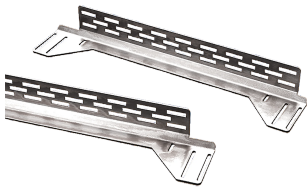


Adjustable Rack-Mounting Rails, fits 600mm deep, Steel

CATALOG NUMBER

PBARA6



Mounting rails allow rack angles to be positioned anywhere within the ProLine frame. The left-to-right adjustment pertains only when the enclosure is wider than the minimum width required for rack angles. Includes two right-hand and two left-hand mounting rails. Mounting hardware is included.

FEATURES

Furnished in set of four, two right-hand and two left-hand; mounting hardware included

Constructed of 12 gauge conductive steel; items ending in 'B' are RAL 9005 black

Rails mount depth-wise (front-to-back)

PRODUCT ATTRIBUTES

Article Number: 34679

Material: Mild Steel

Weight: 8.4lb

Finish: Plated

Thickness: 12ga

WARNING

nVent products shall be installed and used only as indicated in nVent's product instruction sheets and training materials. Instruction sheets are available at www.nvent.com and from your nVent customer service representative. Improper installation, misuse, misapplication or other failure to completely follow nVent's instructions and warnings may cause product malfunction, property damage, serious bodily injury and death and/or void your warranty.



Our powerful portfolio of brands:

CADDY ERICO HOFFMAN ILSCO SCHROFF TRACHTE