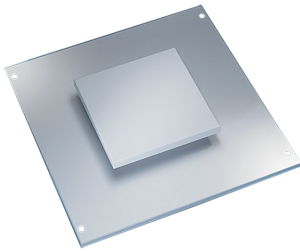


ProLine G2 Pagoda Tops, fits 800x1000mm, Painted

CATALOG NUMBER

P2TP810



Pagoda tops can be used on the top of a modular enclosure for active cooling. The design features a drip-proof raised pagoda vent with a 115-volt integral axial exhaust fan, and includes gasket seals to maintain a NEMA 12 enclosure rating.

FEATURES

Maintains NEMA 12 Type rating on enclosure when installed

Drip-protected, raised pagoda vent

Integral axial exhaust fan for active cooling

Pagoda Tops 1200 mm and greater in width have one drip protected, raised pagoda vent opening positioned over one side that can be oriented for right or left ventilation

Seamless polyurethane gasket between top and frame (UL component recognized) provides a water-tight, dust-tight seal against moisture and contaminants

Includes four M12 hex bolts for installation

Lifting eyes (not included) can be used instead of bolts

PRODUCT ATTRIBUTES

Article Number: 32705

Material: Mild Steel

Weight: 23.44lb

Color: Light Gray

Color Code: RAL 7035

Finish: Powder Coated

Thickness: 14ga

WARNING

nVent products shall be installed and used only as indicated in nVent's product instruction sheets and training materials. Instruction sheets are available at www.nvent.com and from your nVent customer service representative. Improper installation, misuse, misapplication or other failure to completely follow nVent's instructions and warnings may cause product malfunction, property damage, serious bodily injury and death and/or void your warranty.



Our powerful portfolio of brands:

CADDY ERICO HOFFMAN ILSCO SCHROFF TRACHTE