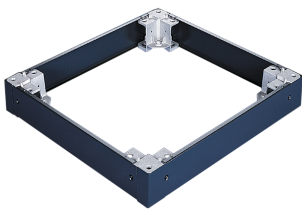


ProLine G2 100-mm Plinth Bases, fits 600x500mm, Black, Steel

CATALOG NUMBER

P2BP165



ProLine G2 Plinth Bases install under an enclosure to provide space for cables to enter from below.

FEATURES

Four access panels for cable management options at the base of the enclosure

Sturdy cast aluminum corner supports for superior performance under load

Corner blocks can be installed onto the base of the frame independent of the cover plates, enabling the cover plates to be attached after integration and just prior to shipment

Stackable up to 400mm in height using Plinth Base Stacking Kit (not included)

100 mm or 200 mm options

To maintain a NEMA Type 12 environmental rating, gland plate must also be used in the base of the enclosure

Installation hardware included

PRODUCT ATTRIBUTES

Article Number: 31091

Height: 3.94in

Width: 23.58in

Depth: 18.27in

Material: Mild Steel

Finish: Powder Coated

Color: Jet Black

Color Code: RAL 9005

Thickness: 16ga

Weight: 13lb

WARNING

nVent products shall be installed and used only as indicated in nVent's product instruction sheets and training materials. Instruction sheets are available at www.nvent.com and from your nVent customer service representative. Improper installation, misuse, misapplication or other failure to completely follow nVent's instructions and warnings may cause product malfunction, property damage, serious bodily injury and death and/or void your warranty.



Our powerful portfolio of brands:

CADDY ERICO HOFFMAN ILSCO SCHROFF TRACHTE