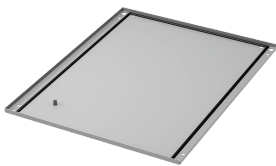


# ProLine G2 Solid Base 0mm, fits 1000x600mm, EMC

## CATALOG NUMBER

**P2B0106HF**



ProLine G2 0-mm Solid Bases are used to close the bottom opening on an enclosure frame.

## FEATURES

Casters or levelers can be used to attach the solid base, in place of the included hardware

Seamless polyurethane gasket (UL component recognized) provides a water-tight, dust-tight seal against moisture and contaminants

Includes four M12 hex bolts for installation

Solid Bases are finished with paint over plated surfaces

## PRODUCT ATTRIBUTES

Article Number: 30907

Material: Mild Steel

Weight: 21lb

Color: Light Gray

Color Code: RAL 7035

Finish: Galvanized; Powder Coated

Thickness: 16ga

## WARNING

nVent products shall be installed and used only as indicated in nVent's product instruction sheets and training materials. Instruction sheets are available at [www.nvent.com](http://www.nvent.com) and from your nVent customer service representative. Improper installation, misuse, misapplication or other failure to completely follow nVent's instructions and warnings may cause

product malfunction, property damage, serious bodily injury and death and/or void your warranty.



Our powerful portfolio of brands:

**CADDY ERICO HOFFMAN ILSCO SCHROFF TRACHTE**