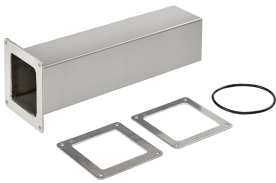


# Telescope Fitting Feed-Through, 4.00x4.00, Brushed, SS304

## CATALOG NUMBER

### F44WASS



Feed-Through Stainless Steel Telescope Fittings are for adjusting wireway length without cutting or welding. Length is easily adjustable from 1.50 in. to 13.50 in. (343 mm). Connects to other wireway sections and fittings and protects wires and cables in frequently hosed down, very wet or highly corrosive applications.

## FEATURES

Feed-Through Stainless Steel Telescope Fittings are for adjusting wireway length without cutting or welding

Length is easily adjustable from 1.50 in. to 13.50 in. (343 mm)

Connects to other wireway sections and fittings and protects wires and cables in frequently hosed down, very wet or highly corrosive applications

## PRODUCT ATTRIBUTES

Article Number: 15490

Type: Telescope Fitting

Height: 4in

Width: 4in

Material: Stainless Steel 304

Finish: No. 2B

Thickness: 16ga

Weight: 5.9lb

## ADDITIONAL PRODUCT DETAILS

All dimensions are to outside surfaces. Allow .12 in. (3 mm) additional for gasket at joints.

## WARNING

---

nVent products shall be installed and used only as indicated in nVent's product instruction sheets and training materials. Instruction sheets are available at [www.nvent.com](http://www.nvent.com) and from your nVent customer service representative. Improper installation, misuse, misapplication or other failure to completely follow nVent's instructions and warnings may cause product malfunction, property damage, serious bodily injury and death and/or void your warranty.



Our powerful portfolio of brands:

**CADDY ERICO HOFFMAN ILSCO SCHROFF TRACHTE**