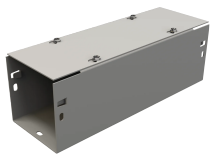


# Straight Section Lay-in Flat Cover Type 1 with KO, 4x4x24, Gray, Steel

## CATALOG NUMBER

**F44T124GVPWK**



Lay-in Flat-Cover Type 1 Straight Sections are used for enclosing wire and cable in wireway runs. Sections are completely open on one side so wire and cable can be laid-in along run, which eliminates the action of pulling wires or cables that can result in insulation damage.

## FEATURES

Lay-in Flat-Cover Type 1 Straight Sections are used for enclosing wire and cable in wireway runs

Sections are completely open on one side so wires and cables can be laid-in along run

Lay-in design eliminates the action of pulling wires or cables, which can result in insulation damage

Flat-cover design supports mounting flush with walls or ceilings

Covers feature keyhole screw slots which simplify cover installation and removal, and limit risk of losing securing screws

Sections available in lengths from 12 to 120 inches, with or without knockouts

4"x4" and 6"x6" Straight Sections re-designed with Snap Connect features for ease-of-installation; sections are backwards compatible if a legacy U-Connector is present

## PRODUCT ATTRIBUTES

Article Number: 13301

Type: Straight Section

Height: 4in

Width: 4in

Depth: 24in

Material: Mild Steel

Finish: Powder Coated

Color: Gray

Color Code: ANSI 61

Thickness: 16ga

Connection Type: Snap-in

Knockout Sizes: (8) 1.0 - 1.25"; (8) 0.50 - 0.75"

Weight: 7lb

## **WARNING**

---

nVent products shall be installed and used only as indicated in nVent's product instruction sheets and training materials. Instruction sheets are available at [www.nvent.com](http://www.nvent.com) and from your nVent customer service representative. Improper installation, misuse, misapplication or other failure to completely follow nVent's instructions and warnings may cause product malfunction, property damage, serious bodily injury and death and/or void your warranty.



Our powerful portfolio of brands:

**CADDY ERICO HOFFMAN ILSCO SCHROFF TRACHTE**