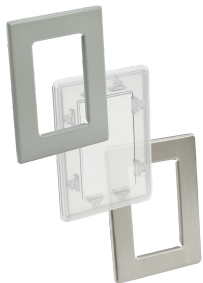


Window Kit Type 4 and 12 , 37.50x25.50x.31, Gray ANSI 61, Mild Steel

CATALOG NUMBER

APWK3523NF



All Window kits are easy to install and require a simple rectangular enclosure cut-out. They are ideal for indoor and outdoor Type 3R, 4 and 12 applications. Stainless Steel Window Kits are ideal for indoor and outdoor Type 3R, 4X and 12 applications where corrosion is a concern. Non-Metallic Window Kits are ideal for indoor and outdoor Type 3R, 4, 4X and 12 applications. They are also ideal for non-metallic enclosures where exterior metallic materials are not allowed and can accommodate up to .25-in. enclosure material thickness. When determining if a window kit will fit in a door or cover, be sure to allow for gaskets, data pockets, door handles, latch rods and other parts attached to the door or cover.

Stainless Steel Window kits have a formed heavy gauge Type 304 stainless steel frame with a brushed finish. The clear window is made of .25-in. (6mm) impact-resistant polycarbonate material. They are ideal for indoor and outdoor Type 3R, 4X and 12 applications.

Non-Metallic Window kits are made of a single piece special polycarbonate blend, Makrolon, that has enhanced impact, UV, water exposure, absorption, and saturation resistance. They are ideal for indoor and outdoor Type 3R, 4, 4X and 12 applications. They are also ideal for non-metallic enclosures where exterior metallic materials are not allowed and can accommodate up to .25-in. enclosure material thickness.

All Window kits are easy to install and require a simple rectangular enclosure cut-out. All required hardware is furnished, along with assembly and cut-out instructions. The gasket material on all windows is resistant to oils, cutting fluids and many other liquids.

Window kits of the same size use the same interchangeable cut-out. Custom sizes for Steel and Stainless Steel Window Kits are available along with different finishes and gasket materials. Consult HOFFMAN for details.

INDUSTRY STANDARDS

UL 508A Component Recognized; Type 4, 4X (stainless steel and

non-metallic versions only), 3R, 12; File No. E61997.

UL 746C Component Recognized (non-metallic version only).

CSA Type 4, 4X (stainless steel and non-metallic versions only), 3R, 12; File No. 42186

NEMA/EEMAC 4, 4X (stainless steel and non-metallic versions only), 3R, 12

IEC 60529, IP66

FEATURES

Window kits of the same size use the same interchangeable cut-out

The gasket material on all windows is resistant to oils, cutting fluids and many other liquids

All required hardware is furnished, along with assembly and cut- out instructions

The clear window of the Steel and Stainless Steel Window Kit is made of .25-in. (6mm) impact-resistant polycarbonate material

Non-Metallic Window kit are made of a single piece polycarbonate material

PRODUCT ATTRIBUTES

Article Number: 21900

Material: Mild Steel

Finish: Powder Coated

Color: Gray

Color Code: ANSI 61

Thickness: 14ga

Window Size: 35.00 x 23.00in

Cutout Size: 36.69 x 24.69in

Weight: 17.9lb

ADDITIONAL PRODUCT DETAILS

When determining if a window kit will fit in a door or cover, be sure to allow for gaskets, data pockets, door handles, latch rods and other parts attached to the door or cover.

WARNING

nVent products shall be installed and used only as indicated in nVent's product instruction sheets and training materials. Instruction sheets are available at www.nvent.com and from your nVent customer service representative. Improper installation, misuse, misapplication or other failure to completely follow nVent's instructions and warnings may cause product malfunction, property damage, serious bodily injury and death and/or void your warranty.



Our powerful portfolio of brands:

CADDY ERICO HOFFMAN ILSCO SCHROFF TRACHTE