

Floor-Mount Disconnect 2-Door 3pt Latch Type 4X, 90x78x20, Brushed, SS304

CATALOG NUMBER

A90XM7820SSN4



This disconnect enclosure is designed to house electronic controls and components. It provides protection from noncorrosive or mildly corrosive elements in both indoor and outdoor environments. Typical applications are in the food and beverage, packaging, water, petroleum and chemical processing industries. Designed to house the most popular disconnect switches and circuit breakers.

INDUSTRY STANDARDS

UL 508A Listed 508; Type 3R, 4, 4X, 12; File No. E61997
cUL Listed per CSA C22.2 No. 94; Type 3R, 4, 4X, 12; File No. E61997

NEMA/EEMAC Type 3R, Type 4, 4X, 12

IEC 60529, IP66

Meets NEMA Type 3RX requirements

FEATURES

Disconnect enclosure is designed to house electronic controls

Seams continuously welded and ground smooth

Body stiffeners in larger enclosures for extra rigidity

Body flange trough collar excludes liquids and contaminants

Heavy-duty lifting eyes anchor into reinforced top

Removable centerposts permit easy panel installation

Heavy-gauge continuous hinges

Heavy-duty 3-point latching mechanism operated by Type 316L stainless steel PowerGlide padlocking handle on all doors

Panel supports

Data pocket is high-impact thermoplastic

Seamless foam-in-place gasket provides oil-tight and dust-tight seal against contaminants

Removable 10 gauge steel panels mount on collar studs

Master door is far right-hand door on all enclosures

Type 316 stainless steel handle with defeater on primary door

Type 316 stainless steel handle (non-defeater) on secondary door

Mechanical interlock activated by primary door prevents secondary doors from being opened first. Doors can be closed in any order.

Preferred cutout on right flange provides mounting for most disconnect operators

Bonding provision on doors; grounding studs on body

Accessory mounting channel provided in enclosure to

PRODUCT ATTRIBUTES

Article Number: 11131

Height (H): 90.12in

Width (W): 78.5in

Depth (D): 20.12in

Material: Stainless Steel 304

Finish: Brushed #4

Thickness (T): 12ga

Weight: 1155lb

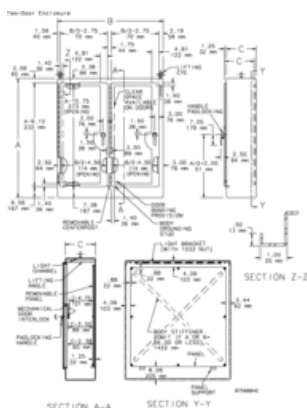
ADDITIONAL PRODUCT DETAILS

White mild steel panels are furnished with enclosure. Optional conductive panels are available.

All 24.12-in. (613-mm) and deeper enclosures using short connecting rods in the following models require a HOFFMAN platform assembly, catalog number ADSCPA, purchased separately. • ABB Controls flange-operated devices • Eaton Cutler-Hammer C361 devices • Eaton Cutler-Hammer C371 mechanisms which use C371E, F, G, K operating mechanism • General Electric Type TDA devices (see next paragraph for option) • Schneider Square D Class 9422 devices (see next paragraph for option)

The platform assembly can be omitted if long connecting rods are ordered in place of short connecting rods. • For Eaton Cutler-Hammer operating mechanisms C371E and C371F order catalog number C371CS1 connecting rod. For C371G and C371K order catalog number C371CS2 connecting rod. • For General Electric devices, order catalog number TDSR extended length drive rod • For Schneider Square D devices, order catalog number 9422-R2 extra long operating rod(s). Some devices require two rods. Consult factory for space occupied on panel when platform is used.

DIAGRAMS



WARNING

nVent products shall be installed and used only as indicated in nVent's product instruction sheets and training materials. Instruction sheets are available at www.nvent.com and from your nVent customer service representative. Improper installation, misuse, misapplication or other failure to completely follow nVent's instructions and warnings may cause product malfunction, property damage, serious bodily injury and death and/or void your warranty.



Our powerful portfolio of brands:

CADDY ERICO HOFFMAN ILSCO SCHROFF TRACHTE