

Sequestr External Disconnect Pkg Gry In Type 12, 90.12x158.00x18.12, Gray, Steel

CATALOG NUMBER

A90XD4EW18FTCLPG



The Sequestr External Disconnect Enclosure Package helps mitigate arc flash occurrences when working on interior components by isolating incoming power from the main enclosure. Shipped as one unit for new installations, the disconnect switch and fuse block/circuit breaker are mounted in the external enclosure, with terminal connections to bring power to the main enclosure.

INDUSTRY STANDARDS

UL 508A Listed; Type 12; File No. E61997

cUL Listed per CSA C22.2 No. 94; Type 12; File No. E61997

NEMA/EEMAC Type 12

IEC 60529, IP55

FEATURES

Interlocks doors of main control cabinet when disconnect switch is powered ON

Mechanical interlock on main control enclosure activated by primary door prevents secondary door from being opened first

Provision for pass-through power into the main enclosure

Preferred disconnect cutout

Quarter-turn, screwdriver slot latch on Sequestr Enclosure

Rugged PowerGlide Handle with three-point latch on main control enclosure

Concealed, easy-to-remove hinges

Grounding studs on body

Bonding provision on door

Conductive back panel included in Sequestr External Disconnect Enclosure

Optional back panel for main control cabinet for maximum ordering flexibility

Sequestr External Disconnect Enclosure is shipped unattached for easy disconnect installation

A28X base enclosure

A70D external disconnect enclosure

External disconnect enclosure is 16 gauge (.060-inch); main control cabinet is 11 gauge (.121-inch)

Continuously welded and ground seams all around

Body flange trough excludes liquids and contaminants

Heavy duty lifting eyes anchored into reinforced top

Removable centerposts for easy back panel installation

No disconnect cutout on main control cabinet

PRODUCT ATTRIBUTES

Article Number: 25804

Height (H): 90.12in

Width (W): 158in

Depth (D): 18.12in

Material: Mild Steel

Finish: Powder Coated

Exterior Color: Gray

Interior Color: Gray

Exterior Color Code: ANSI 61

Thickness (T): 16ga

Panel Quantity: 2

Weight: 1916.75lb

ADDITIONAL PRODUCT DETAILS

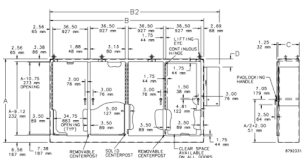
B dimension is large enclosure without External Disconnect Enclosure.

B2 dimension is overall size including External Disconnect Enclosure.

Purchase panels separately.

Note: Sequestr External Disconnect Enclosure is ANSI 61 gray inside and out.

DIAGRAMS



WARNING

nVent products shall be installed and used only as indicated in nVent's product instruction sheets and training materials. Instruction sheets are available at www.nvent.com and from your nVent customer service representative. Improper installation, misuse, misapplication or other failure to completely follow nVent's instructions and warnings may cause product malfunction, property damage, serious bodily injury and death and/or void your warranty.



Our powerful portfolio of brands:

CADDY ERICO HOFFMAN ILSCO SCHROFF TRACHTE