

# Freestand Single Access White Inside Type 12, 90.06x24.06x20.06, Gray, Steel

## CATALOG NUMBER

**A902420FS**



Available with front or front and rear access, these Type 12 enclosures have sturdy unibody construction and flexible internal mounting options to provide panel and component mounting flexibility

## INDUSTRY STANDARDS

UL 508A Listed; Type 12; File No. E61997

cUL Listed per CSA C22.2 No. 94; Type 12; File No. E61997

NEMA/EEMAC Type 12

E.I.A. RS310D

CSA, File No. 42186, Type 12

IEC 60529, IP55

Applicable industry standards only for enclosures with Seismic

Accessories:

NEBS- Telcordia GR-63-CORE Zone 4, tested with 1000lbs evenly distributed

OSHPD Pre-Approval OPM-0247-13

## FEATURES

Seams continuously welded and ground smooth; no holes or knockouts

Stiffeners on back of two-door enclosures maintain flatness and increase rigidity

Lifting eyes for easy handling

3-point latches operated by oil-tight key-locking handle

Concealed, easy-to-remove hinges

Data pockets are high-impact thermoplastic

Internal mounting channels welded horizontally to sides at top, bottom and center

Optional panels and rack mount angles can be mounted anywhere along channels

Oil-resistant door gasket

Bonding provision on door

Provision for mounting fluorescent light

## PRODUCT ATTRIBUTES

---

Article Number: 25330

Height (H): 90.06in

Width (W): 24.06in

Depth (D): 20.06in

Material: Mild Steel

Finish: Powder Coated

Color: Gray

Interior Color: White

Color Code: ANSI 61

Thickness (T): 12ga

Rack Unit Quantity: 45

Lifting Eye Quantity: 2

Weight: 328lb

## ADDITIONAL PRODUCT DETAILS

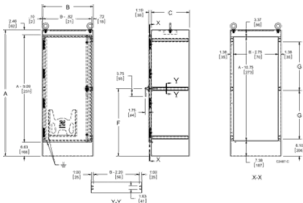
---

Order panels separately.

Four lifting eyes are furnished if  $C = 30.06$  (764mm) or more. Removable  $12.00 \times 12.00$  (305mm x 305mm) data pocket included.

## DIAGRAMS

---



## WARNING

---

nVent products shall be installed and used only as indicated in nVent's product instruction sheets and training materials. Instruction sheets are available at [www.nvent.com](http://www.nvent.com) and from your nVent customer service representative. Improper installation, misuse, misapplication or other failure to completely follow nVent's instructions and warnings may cause product malfunction, property damage, serious bodily injury and death and/or void your warranty.



Our powerful portfolio of brands:

**CADDY   ERICO   HOFFMAN   ILSCO   SCHROFF   TRACHTE**