

Sequestr External Disconnect Package 1-Door Type 4X, 84x40x24, Brushed, SS304

CATALOG NUMBER

A84XD4024SSFTCLP



The Stainless Steel Sequestr External Disconnect Enclosure package helps mitigate arc flash occurrences when working on interior components by isolating incoming power from the main enclosure. Manufactured from 304 stainless steel, it provides protection from non-corrosive or mildly corrosive elements in both indoor and outdoor environments. A package includes a main enclosure and a Sequestr box. Sequestr boxes can be ordered separately to retrofit existing enclosures. The disconnect switch and fuse block/circuit breaker are mounted in the external enclosures, with terminal connections to bring power to the main enclosure.

INDUSTRY STANDARDS

UL 508A Listed 508; Type 3R, 4, 4X, 12; File No. E61997
cUL Listed per CSA C22.2 No. 94; Type 3R, 4, 4X, 12; File No. E61997

NEMA/EEMAC Type 3R, Type 4, 4X, 12

IEC 60529, IP66

Meets NEMA Type 3RX requirements

FEATURES

Package includes a main enclosure and a Sequestr box.

Main enclosure 12 gauge Type 304 stainless steel

Sequestr enclosure is 14 gauge Type 304 stainless steel

Seams continuously welded and ground smooth

Interlocks doors of main control cabinet when disconnect switch is powered ON

Mechanical interlock on main control enclosure activated by primary door, preventing secondary door from being opened first

Provision for pass-through power into the main enclosure

Preferred Disconnect cutout

Quarter-turn, screwdriver slot latch on Sequestr Enclosure

Heavy-duty 3-point latching mechanism operated by Type 316L stainless steel PowerGlide padlocking handle on all doors

Concealed, easy-to-remove hinges

Grounding studs on body

Bonding provision on door

Conductive back panel included in Sequestr External Disconnect Enclosure

Optional back panel for main control cabinet for maximum ordering flexibility

Sequestr External Disconnect Enclosure is shipped unattached for easy disconnect installation

PRODUCT ATTRIBUTES

Article Number: 27936

Height (H): 84.12in

Width (W): 40.25in

Depth (D): 24.12in

Material: Stainless Steel 304

Finish: Brushed #4

Thickness (T): 14ga

Weight: 2lb

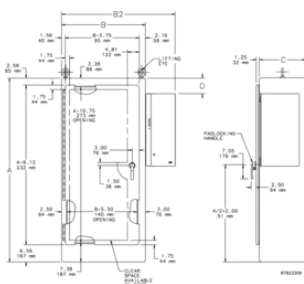
ADDITIONAL PRODUCT DETAILS

B dimension is large enclosure without External Disconnect Enclosure.

B2 dimension is overall size including External Disconnect Enclosure.

Purchase panels separately.

DIAGRAMS



WARNING

nVent products shall be installed and used only as indicated in nVent's product instruction sheets and training materials. Instruction sheets are available at www.nvent.com and from your nVent customer service representative. Improper installation, misuse, misapplication or other failure to completely follow nVent's instructions and warnings may cause product malfunction, property damage, serious bodily injury and death and/or void your warranty.



Our powerful portfolio of brands:

CADDY ERICO HOFFMAN ILSCO SCHROFF TRACHTE