

Floorstand Disconnect 2Dr Gray Inside Type 12, 72.12x73.75x24.12, Gray, Steel

CATALOG NUMBER

A72X7324LPFTCG



A disconnect can be installed on the centerpost or right side of this enclosure. Floor stands provide additional height and access for cleaning under the enclosure.

INDUSTRY STANDARDS

UL 508A Listed; Type 12; File No. E61997

cUL Listed per CSA C22.2 No. 94; Type 12; File No. E61997

NEMA/EEMAC Type 12

IEC 60529, IP55

FEATURES

Seams continuously welded and ground smooth

Body stiffeners in larger enclosures for extra rigidity

Body flange trough excludes liquids and contaminants

Removable centerposts permit easy panel installation

Concealed, easy-to-remove hinges

Heavy-duty 3-point latching mechanism operated by padlocking handle on all doors

Heavy-duty lifting eyes anchor into reinforced top

Data pocket is high impact thermoplastic

15-inch floor stands are bolted-on to enclosure

Provisions for mounting lights

Oil-resistant door gasket

Panel supports

Collar studs provided for mounting optional panels

Master door is right-hand door on X enclosures and left-hand door on CPX enclosures

Mechanical interlock operated by primary door prevents secondary door from being opened first; doors can be closed in any order

Includes door hardware

PRODUCT ATTRIBUTES

Article Number: 25671

Height (H): 72.12in

Width (W): 73.75in

Depth (D): 24.12in

Material: Mild Steel

Finish: Powder Coated

Exterior Color: Gray

Interior Color: Gray

Exterior Color Code: ANSI 61

Thickness (T): 11ga

Stiffener Position (S): 24in

Weight: 925lb

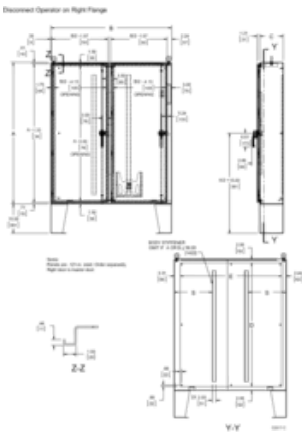
ADDITIONAL PRODUCT DETAILS

Purchase panels separately.

All 24.12-in. (613-mm) and deeper enclosures using short connecting rods in the following models require a HOFFMAN platform assembly, catalog number ADSCLPA, purchased separately. • ABB Controls flange-operated devices • Eaton Cutler-Hammer C361 devices • Eaton Cutler-Hammer C371 mechanisms which use C371E, F, G, K operating mechanism (see footnote below) • General Electric Type TDA devices (see footnote below) • Schneider Square D Class 9422 devices (see footnote below)

The platform assembly can be omitted if long connecting rods are ordered in place of short connecting rods. • For Eaton Cutler-Hammer operating mechanisms C371E and C371F order catalog number C371CS1 connecting rod. For C371G and C371K order catalog number C371CS2 connecting rod. • For General Electric devices, order catalog number TDSR extended length drive rod • For Schneider Square D devices, order catalog number 9422-R2 extra long operating rod(s). Some devices require two rods.

DIAGRAMS



WARNING

nVent products shall be installed and used only as indicated in nVent's product instruction sheets and training materials. Instruction sheets are available at www.nvent.com and from your nVent customer service representative. Improper installation, misuse, misapplication or other failure to completely follow nVent's instructions and warnings may cause product malfunction, property damage, serious bodily injury and death and/or void your warranty.



Our powerful portfolio of brands:

CADDY ERICO HOFFMAN ILSCO SCHROFF TRACHTE