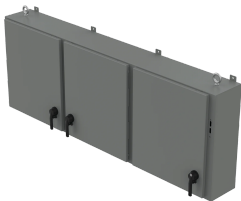


Low-Profile 3-Door Disconnect Type 12, 60.00x118.25x24.00, Gray, Steel

CATALOG NUMBER

A60X3E11924



Available in one- to four-door wall-mount and one- to five-door free-stand models, the larger wall-mount sizes accommodate more components and are ideal for applications with limited floor space. Free-stand enclosures are 48- and 60-in. high to provide a clear line of site above the enclosure.

INDUSTRY STANDARDS

UL 508A Listed; Type 12; File No. E61997

cUL Listed per CSA C22.2 No. 94; Type 12; File No. E61997

NEMA/EEMAC Type 12

IEC 60529, IP55

FEATURES

Seams continuously welded and ground smooth

Body stiffeners in larger enclosures for extra rigidity

Body flange trough excludes liquids and contaminants

Heavy duty lifting eyes anchor into reinforced top on larger models

Removable centerposts for easy panel installation

Concealed, easy-to-remove hinges

Heavy duty latch mechanism operated by zinc die-cast padlocking defeater handle on all doors; 2-point latch on enclosures up to 36 in. (914 mm); 3-point latch on enclosures 42 in. (1067 mm) and above

Oil-resistant gasket

Removable .127-in. thick steel panels mount on collar studs

Master door is far right-hand door on all enclosures

Defeater on primary door requires a screwdriver to open

Preferred cutout on right flange provides mounting for most disconnect switches and circuit breakers

Enclosures with three to five doors have three stiffeners on rear of body

PRODUCT ATTRIBUTES

Article Number: 13664

Height (H): 60in

Width (W): 118.25in

Depth (D): 24in

Material: Mild Steel

Finish: Powder Coated

Color: Gray

Color Code: ANSI 61

Thickness (T): 0.098in

Body Stiffener: 3

Panel Quantity: 1; 1

Lifting Eye Quantity: 2

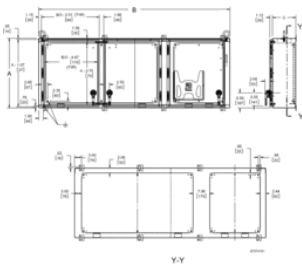
Weight: 988lb

ADDITIONAL PRODUCT DETAILS

Purchase panels separately.

DIAGRAMS

Tree Door Enclosure



WARNING

nVent products shall be installed and used only as indicated in nVent's product instruction sheets and training materials. Instruction sheets are available at www.nvent.com and from your nVent customer service representative. Improper installation, misuse, misapplication or other failure to completely follow nVent's instructions and warnings may cause product malfunction, property damage, serious bodily injury and death and/or void your warranty.



Our powerful portfolio of brands:

CADDY ERICO HOFFMAN ILSCO SCHROFF TRACHTE