

# Hinge Cover Enclosure Quick-Release Type 4X, 30.25x24.25x12.00, Gray, Fiberglass

## CATALOG NUMBER

**A30H2412GQRLP**



A full range of modification options are available for wall-mount fiberglass enclosures, including variable depths to accommodate larger controls. These enclosures feature padlockable polyester latches, or HOFFMAN's exclusive PowerGlide Handle with 3-point latching, for ease of access with increased security.

## INDUSTRY STANDARDS

UL 508A Listed; Type 3, 3R, 4, 4X, 12, 13; File No. E61997  
cUL Listed per CSA C22.2 No 94; Type 3, 3R, 4, 4X, 12, 13;  
File No. E61997

Enclosure flammability evaluated per UL 508A

NEMA/EEMAC Type 3, 3R, 4, 4X, 12, 13

IEC 60529, IP66

Meets NEMA Type 3RX requirements

## CERTIFICATIONS



## FEATURES

Fiberglass-reinforced material has excellent temperature and chemical resistance qualities and exhibits outstanding physical properties

Type 316L stainless steel padlocking PowerGlide Handle on 3-point latch versions assures security and a water-tight seal while still allowing convenient access

Quick-release latch versions feature fiberglass-reinforced polyester latches with integral Type 316L stainless steel padlocking hasp

Seams are sealed; no holes or knockouts

Gasket assures water-tight and dust-tight seal

Fiberglass material is easily punched, drilled, filed or sawed

Data pocket is high-impact thermoplastic

Copper-flashed steel collar studs for mounting optional panels and terminal block kits

## PRODUCT ATTRIBUTES

Article Number: 29570

Height (H): 30.25in

Width (W): 24.25in

Depth (D): 12in

Material: Fiberglass

Finish: Smooth Matte

Color: Gray

Thickness (T): 0.14in

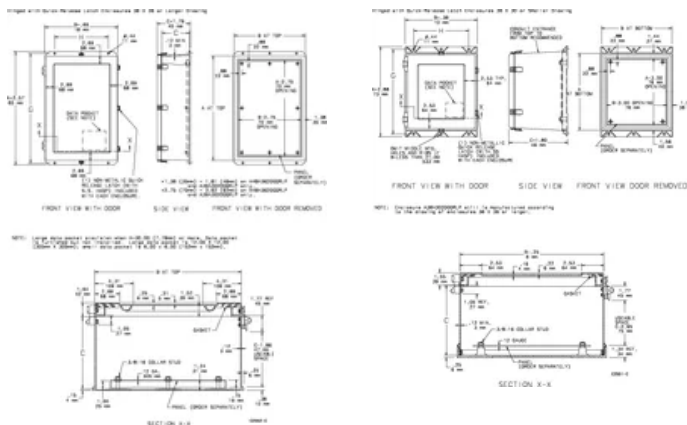
Latch Quantity: 5

Weight: 40.6lb

## ADDITIONAL PRODUCT DETAILS

Purchase panels separately. Optional stainless steel, composite and aluminum panels available for most sizes. See General Accessories

## DIAGRAMS



## WARNING

nVent products shall be installed and used only as indicated in nVent's product instruction sheets and training materials. Instruction sheets are available at [www.nvent.com](http://www.nvent.com) and from your nVent customer service representative. Improper installation, misuse, misapplication or other failure to completely follow nVent's instructions and warnings may cause product malfunction, property damage, serious bodily injury and death and/or void your warranty.



Our powerful portfolio of brands:

**CADDY ERICO HOFFMAN ILSCO SCHROFF TRACHTE**