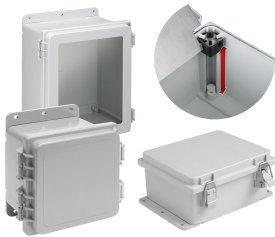


# PolyPro Type 4X, 17.95x15.94x10.35, Polyester

## CATALOG NUMBER

**A181610PHC**



PolyPro polyester enclosures perform exceptionally well in applications where harsh chemicals, weather extremes and corrosive environments demand toughness from a lightweight enclosure. Providing excellent ultraviolet protection and a tight environmental seal, these versatile, feature-rich enclosures are also recyclable.

## INDUSTRY STANDARDS

UL 508A Listed; Type 4, 4X, 12, 13; File No. E61997

cUL Listed per CSA C22.2 No 94; Type 4, 4X, 12, 13; File No. E61997

Enclosure flammability evaluated per UL 508A

Window flammability evaluated per UL 508A

Mounting brackets required to meet UL/CSA external mounting requirements.

NEMA/EEMAC Type 4, 4X, 12, 13

IEC 60529, IP66

## CERTIFICATIONS



## FEATURES

Non-glass-filled polyester material offers superior UV resistance; eliminates fiberbloom associated with fiberglass

Provides excellent chemical resistance to a broad range of solvents, alkalis and acids

Resists cracking and provides excellent impact resistance

Lighter-weight than fiberglass

Recyclable

Easy, dustless in-field modifications using standard tools

Overlapping tongue-and-groove raised cover and gasket provide a secure Type 4X seal

Removable snap-hinge cover allows for easy access to cover and body for modifications

Molded layout grid on inside of body and solid covers assists with component mounting

Molded-in embosses for rear panel mounting

Optional cover screws included with all models

Internal rail system and adjustable panel blocks allow for panel height adjustment and installation of multiple panels

Scratch-resistant polycarbonate windows

Standard models include body and cover, two mounting feet, two latch assemblies with optional cover screws and hardware (adjustable panel blocks and panels sold separately)

## PRODUCT ATTRIBUTES

---

Article Number: 17081

Height: 18.58in

Width: 16.58in

Depth: 10.35in

Material: Polyester

Finish: Smooth Matte

Color: Light Gray

Color Code: RAL 7035

Thickness: 0.12in

Cover Style: Solid

Weight: 12.5lb

## ADDITIONAL PRODUCT DETAILS

---

Purchase panels separately. Panels are available in aluminum, mild steel, stainless steel, conductive and composite materials.

## WARNING

---

nVent products shall be installed and used only as indicated in nVent's product instruction sheets and training materials. Instruction sheets are available at [www.nvent.com](http://www.nvent.com) and from your nVent customer service representative. Improper installation, misuse, misapplication or other failure to completely follow nVent's instructions and warnings may cause product malfunction, property damage, serious bodily injury and death and/or void your warranty.



Our powerful portfolio of brands:

**CADDY ERICO HOFFMAN ILSCO SCHROFF TRACHTE**