



Quality Products. Service Excellence.

ABS Plastic Sealed Enclosures *RS Series*

Key Features:

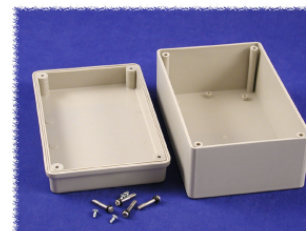
- Designed to house P.C. boards sealed from dust and water (not for outdoor use).
- Molded in light grey general purpose ABS plastic with a light texture (material carries a UL flammability rating of UL94 HB).
- Two-part styled lid construction. Top half includes smooth recessed area for membrane, label or silkscreen.
- P.C. board standoffs are molded into the bottom (two smallest sizes) and molded into both halves of the enclosure (two largest sizes). See photo tables for details. Four short M3 self tapping screws included.
- Gasketed lid with two piece "tongue & groove" construction provides protection against access of oil, dust and water.
- Designed to meet IP65.
- Includes four M4 assembly screws (see table below for type).
- Lid screws are self capturing (lid holes are threaded with the first installation of lid screws).



Assembled View (Top)



Assembled View (Bottom)



Open View

Part Number	Color	Assembly Method	Lid Gasket	Length (mm)	Width (mm)	Height (mm)	Replacement	Replacement
							Gasket	Lid Screws
RS5105S	Grey	Self-Tapping Stainless Steel Screws	Installed	108	108	54.5	RS510GASKET	SC624-50
RS5305S	Grey	Self-Tapping Stainless Steel Screws	Installed	168	108	78.5	RS530GASKET	SC624-50
RS5705	Grey	Stainless Steel Machine Screws Into Stainless Steel Inserts	Kit (Included)	254	204	90	RS570GASKET	SC618-50
RS5805	Grey	Stainless Steel Machine Screws Into Stainless Steel Inserts	Kit (Included)	254	204	130	RS570GASKET	SC618-50

Tags: ABS, plastic, PCB, project box, deep lid

Data subject to change without notice

