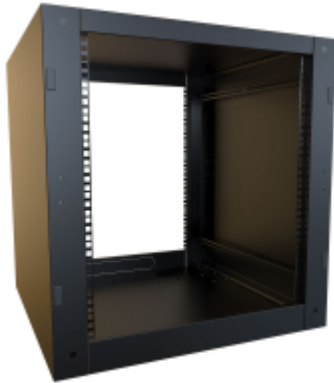




Quality Products. Service Excellence.

Stacking Server Rack Cabinet *RCSC Series*

Load rated to 1,500 lbs (680 kg)



The RCSC Rack Cabinet is the only knockdown, stackable cabinet on the market—perfect for AV IT, and homelab environments. Designed to grow with your needs, it features a unique stacking system that lets you expand vertically by combining up to three (3) 12U or two (2) 24U units. With adjustable sliding rails, cable and cooling punch-outs, and multiple size options, the RCSC offers flexible, future-ready performance. Whether you're outfitting a studio, server room, or expanding a small business, the RCSC is built to scale with you.

Features

- Constructed in 16-gauge steel.
- Includes two (2) pairs of infinitely adjustable 19" EIA compliant square-hole mounting rails with rack unit markings.
 - Starter pack of **CAGKIT1032-25** screws and cage nuts included with 12U units.
 - Starter pack of **CAGKIT1032-50** screws and cage nuts included with 24U units.
- Four (4) embosses are included with support for optional levelling feet or casters.
- Grounding studs are provided on the body.
- The top and bottom of the RCSC include two (2) laser knockouts (per side) for cable-entry or fans (includes gasket strip material).
- Includes a laser knockout rear gland plate for floor-level cable entry.
- Self-squaring design ships un-assembled (some assembly required).



Specifications:

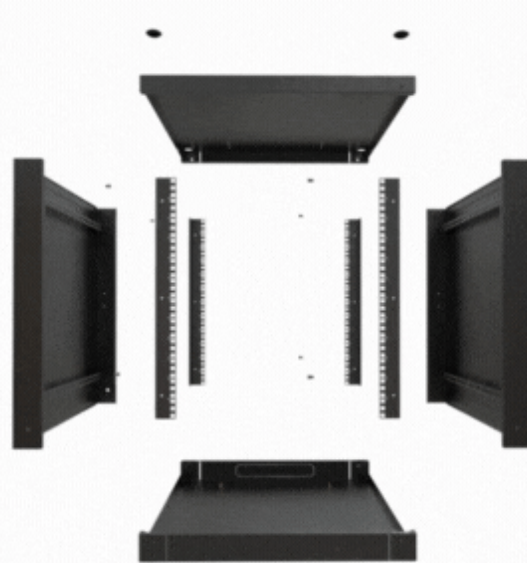
- Mounting rails are infinitely adjustable in-depth and are fabricated of heavy-duty 14-gauge steel, painted smooth black.
- Optional doors are available in solid, tinted acrylic with venting (see above-left) and high airflow vented.
 - Snap-in hinges can be mounted without having to bolt on from inside the cabinet. In addition, the hinges can be mounted on the left or right.
- High airflow perforated doors for both the front and rear of the cabinet are suggested for most server applications.
 - Perforated doors meet server manufacturer Free-Air-Ratio (FAR) requirements at 63%.
- For 36" depth cabinet side panels include cable entry knockouts.
- 1,500 lbs (680 kg) **static load rating**.
- Finished in textured RAL9005 black powder paint. Complies with the Greenguard guidelines for indoor air quality.
- TAA-compliant for federal GSA schedule purchases within the USA.
- RoHS Compliant.
- Manufactured in North America within an ISO 9001:2015 certified facility.

Gallery



Accessories

- Universal Rack Shelf
- Rack Mount Locking Storage Drawer
- Sliding Keyboard Shelf
- Adjustable Server Rack Shelf
- Rack Mount Sliding Shelf
- Mounting Screw and Cage Nut Combo-Pack
- We Manufacture PDUs and Outlet Strips
- Rack Unit Label
- Adjustable Depth Front-To-Rear Cable Manager
- Horizontal Finger Cable Manager
- Horizontal Lacing Strip
- Rack Panels
- Rack and Cabinet Caster Set
- Bonding and Grounding
- Leveling Feet
- Heavy Duty Cooling Fan Kits
- Ground Stud Kit
- Rack Shelf Slide Block



Part No.	Overall Dimensions			Rack Units	Usable Mounting Dimensions		
	Height	Width	Depth		Height	Width	Depth
RCSC1902136BK1	25.00	24.00	36.00	12U	21.00	19.00	34.42

Part No.	Overall Dimensions			Rack	Usable Mounting Dimensions		
	Height	Width	Depth	Units	Height	Width	Depth
RCSC1904236BK1	46.00	24.00	36.00	24U	42.00	19.00	34.42

Optional Doors

Part No.	Part No.	Part No.	Use with Cabinet Panel Height	
Solid Door	Vented Door	Vented Window Door	Units	Rack Units
RCSC19021SDBK1	RCSC19021VDBK1	RCSC19021WDBK1	21.00	12U
RCSC19042SDBK1	RCSC19042VDBK1	RCSC19042WDBK1	42.00	24U

RCSC Baying Kit

Part No.	RCSCBAY
----------	---------

Tags: knock-down, knock down, homelab, Intermediate Distribution Frame (IDF), SOHO, Remote Office *Data subject to change without notice*
 Cabinet, Stacking cabinet, Colocation Cabinet

© 2026. Hammond Manufacturing Ltd. All rights reserved.