

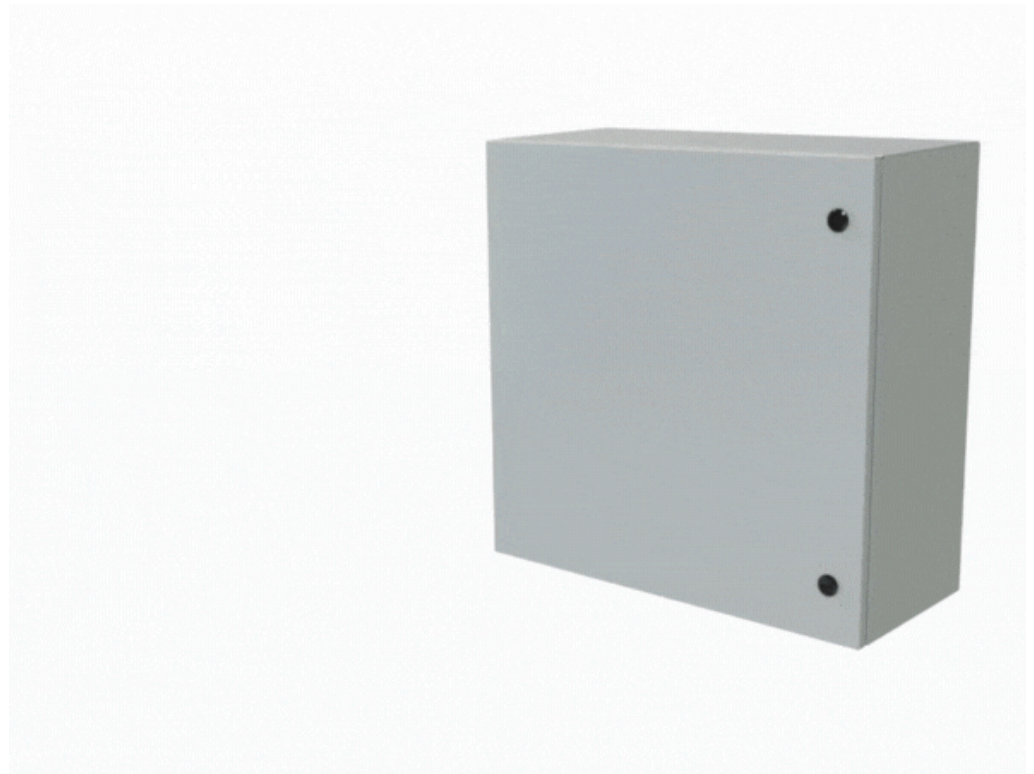


*Quality Products. Service Excellence.*

## Eclipse Swing Panel *ESP Series*



- Hinged panel allows access to internally mounted equipment.
- Can be hinged from either side.
- 12 gauge steel construction.
- Slotted quarter turn latches provide closure.
- Adding optional locking quarter turn latches (Part Number **EQTRL**) convert this to a dead front panel.
- Complete with 4 depth adjustment brackets.
- Hardware kit maintains UL, CSA and NEMA ratings when field installed.
- Finished in white.
- (Note: Not compatible with DSTOPK door stop kit.)



Part No.	Fits Enclosure Size (A x B)
ESP1212	12 x 12
ESP1612	16 x 12
ESP1616	16 x 16
ESP1620	16 x 20
ESP2016	20 x 16
ESP2020	20 x 20
ESP2024	20 x 24
ESP2416	24 x 16
ESP2420	24 x 20
ESP2424	24 x 24

Part No.	Fits Enclosure Size (A x B)
ESP3020	30 x 20
ESP3024	30 x 24
ESP3030	30 x 30
ESP3624	36 x 24
ESP3630	36 x 30
ESP3636	36 x 36
ESP4236	42 X 36
ESP4824	48 X 24
ESP4836	48 X 36
ESP6030	60 X 30
ESP6036	60 X 36

Tags: **swing panel, panel kit, eclipse, steel, hinged, access panel, dead front**

*Data subject to change without notice*

© 2026. Hammond Manufacturing Ltd. All rights reserved.