



Quality Products. Service Excellence.

High Voltage (Plate) - 259 VA to 1610 VA 700 Series

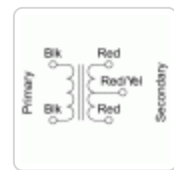
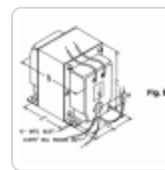
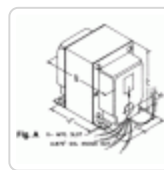
115 V or 117/234 V Primary

Features



- Two versions available:
 - Primary 115 VAC, 50/60 Hz. or
 - Primary 117/234 VAC, 50/60 Hz.
- At 2,000 VAC and above, secondary leads are through rubber bushings (figure B).
- Units can be run full wave bridge or full wave C.T.
- V.A. is a C.C.S. rating
- Current ratings are CCS (Continuous Commercial Service) & ICAS ratings (Intermittent Commercial or Amateur Service).
- Enclosed, 4 hole chassis mount.
- Minimum 6" long leads.
- Class A insulation (105 degrees C).
- Hi-Pot test at a minimum of twice secondary voltage
- Conservative designs - CSA certified (209651).
- For other H.V. combinations check out our **Peter W. Dahl** series as well.
- **Notes:**
 - VA rating specified is CCS (Continuous Commercial Service)
 - ICAS ratings (Intermittent Commercial or Amateur Service)
 - 115VAC only models - Input Black & Black
 - Dual Primary (117/230VAC) models - 117VAC input: connect Blue to Black and Brown to White.
 - 234VAC input: connect Brown to Black - input is Blue & White

Gallery



Part No. 115 VAC Primary	Part No. 117/234 VAC Primary	V.A.	A.C. High Voltage	H.V. Secondary		Weight (Lbs)
			Secondary R.M.S.	Current (CCS) (ICAS)		
710	710A	259	750V C.T.	345ma.	518ma.	7.2
712	712A	293	850V C.T.	345ma.	518ma.	8.8
714	714A	200	1,020V C.T.	196ma.	288ma.	5.5
715	715A	352	1,020V C.T.	300ma.	450ma.	9
717	717A	510	1,020V C.T.	500ma.	750ma.	17.7
718	718A	235	1,250V C.T.	200ma.	300ma.	8
720	720A	370	1,250V C.T.	300ma.	450ma.	12
722	722A	720	1,250V C.T.	575ma.	863ma.	17.7
724	724A	345	1,500V C.T.	226ma.	339ma.	12
726	726A	312	1,780V C.T.	202ma.	299ma.	12
728	728A	346	2,000V C.T.	173ma.	259ma.	12

Part No.	Part No.	V.A.	A.C. High Voltage	H.V. Secondary		Weight (Lbs)
			Secondary R.M.S.	Current (CCS) (ICAS)		
115 VAC Primary	117/234 VAC Primary					
732	732A	500	2,500V C.T.	200ma.	300ma.	17.7
733	733A	750	2,500V C.T.	300ma.	450ma.	24
735	735A	735	3,000V C.T.	250ma.	375ma.	24
737	737A	1200	3,000V C.T.	400ma.	600ma.	28.5
739	739A	1610	3,500V C.T.	375ma.	565ma.	34.7
	742A	1250	5,000V C.T.	250ma.	375ma.	26

Tags: **classic transformers, high voltage, plate, primary, ccs, icas, full wave**

Data subject to change without notice

© 2026. Hammond Manufacturing Ltd. All rights reserved.