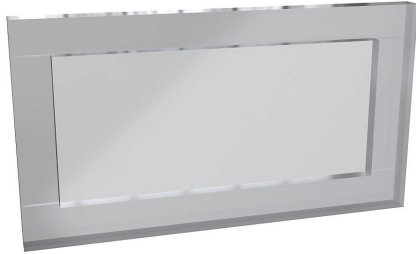


Enclosure Accessories Frameless Window Kits



Application

- Designed for indoor use on NEMA 12 and 13 enclosures.
- Scratch-resistant polycarbonate window is 0.25in [6.35mm] thick.
- Double-sided tape is on the window for easy installation.
- Mounting hardware and template are included.

Shipping Schedule	
Same day	1 - 15 days

Color indicates shipping lead time in business days.

Frameless Window Kits				
Part Number	Price	Window Dimensions AxB	Maximum Cut-Out Size	Drawing Link
1481WFL52	\$59.00	5.50 x 3.00 [140 x 76]	4.50 x 2.00 [114 x 51]	PDF
1481WFL133	\$73.00	13.88 x 3.88 [353 x 99]	12.88 x 2.88 [327 x 73]	PDF
1481WFL96	\$81.00	9.62 x 7.19 [244 x 183]	8.62 x 6.19 [219 x 157]	PDF

Note: Dimensions in inches [millimeters].

