



Quality Products. Service Excellence.

2-Post Rack Light Duty Dolly 1424T Series

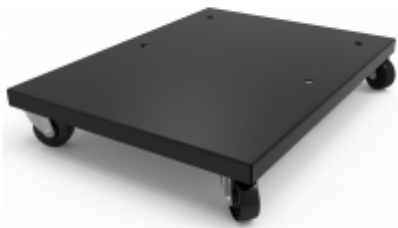
600 lbs (272 kg) Weight Capacity



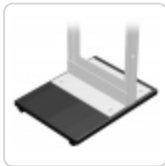
Note: This product line will be discontinued on March 06, 2026 at which time it will only be available while supplies last. No returns will be possible after the discontinuation date.

The suggested replacement will be **RRHDDOL Series**. For alternative solution assistance, please **contact Hammond here** or call: USA (716) 630-7030, Canada and International (519) 822-2960.

Features



- Constructed of 14-gauge steel.
- Finished in rugged textured black powder paint
- Assembled with four (4) casters.
- Mounting hardware included.
- Not for use with 24 inch mounting racks.
- Caster set has a weight capacity of 600 lbs (272 kg).
- TAA compliant for GSA Schedule purchases.
- RoHS and REACH Compliant.
- Manufactured in North America.



Compatibility

- DNRRHDW
- RB-2P
- RB-2PS
- RB-2PA



Part No.	Overall Dimensions			Wheel Diameter	Brakes Included	Physical Dolly Weight
	Height	Width	Depth			
1424T	3.41	21.50	28.00	2.00	No	32 lb (14.5 kg)

Tags: **Caster Base**

Data subject to change without notice

© 2026. Hammond Manufacturing Ltd. All rights reserved.