

PRODUCT INFORMATION PACKET



Model No: 6210E
Catalog No: 6210E

EVERGREEN® EM Fan and Blower Motor, 1 HP, 1 Ph, 60/50 Hz, 208-230 V, 1075 RPM, 1 Speed, 48 Frame,
OPAO



Regal and Genteq are trademarks of Regal Rexnord Corporation or one of its affiliated companies.
©2025 Regal Rexnord Corporation, All Rights Reserved. MC017097E





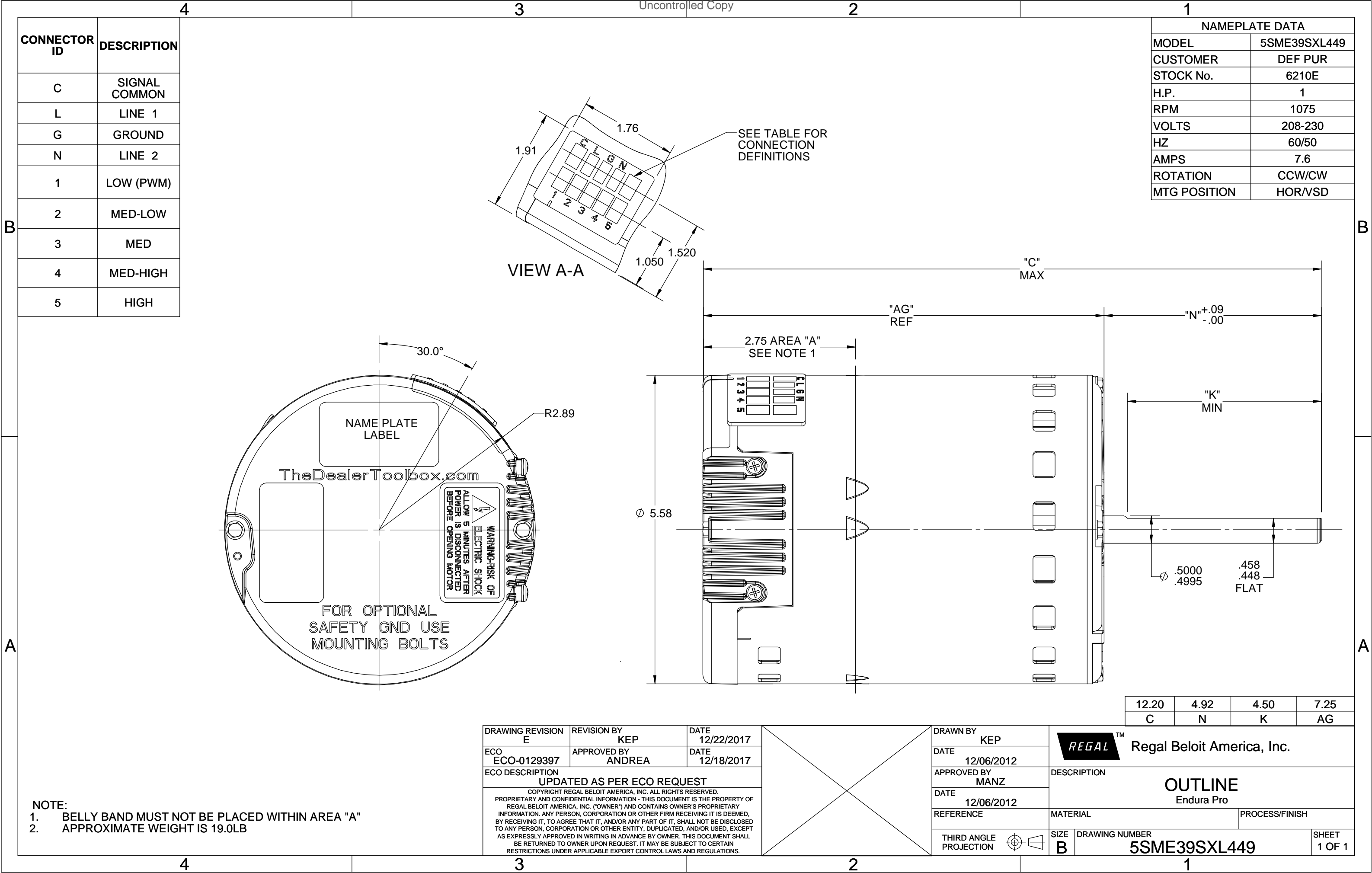
Nameplate Specifications

Phase	1	Output HP	1 Hp
Output KW	0.75 kW	Voltage	208-230 V
Speed	1075 rpm	Service Factor	1
Frame	48	Enclosure	Open Air Over
Thermal Protection	No Protection	Ambient Temperature	40 °C
Frequency	60/50 Hz	Current	7.6 A
Duty	Continuous Air Over	Insulation Class	B
UL	Recognized	CSA	N
CE	N	Number of Speeds	1

Technical Specifications

Electrical Type	Electronically Commutated Motor	Poles	12
Rotation	Counterclockwise/Clockwise	Mounting	Round
Motor Orientation	Hor	Drive End Bearing	Ball
Opp Drive End Bearing	Ball	Frame Material	Rolled Steel
Shaft Type	Flat	Overall Length	12.20 in
Frame Length	6.32 in	Shaft Diameter	0.500 in
Shaft Extension	4.92 in		
Connection Drawing	NR	Outline Drawing	5SME39SXL449

This is an uncontrolled document once printed or downloaded and is subject to change without notice. Date Created:06/18/2025





EXPTL NO.

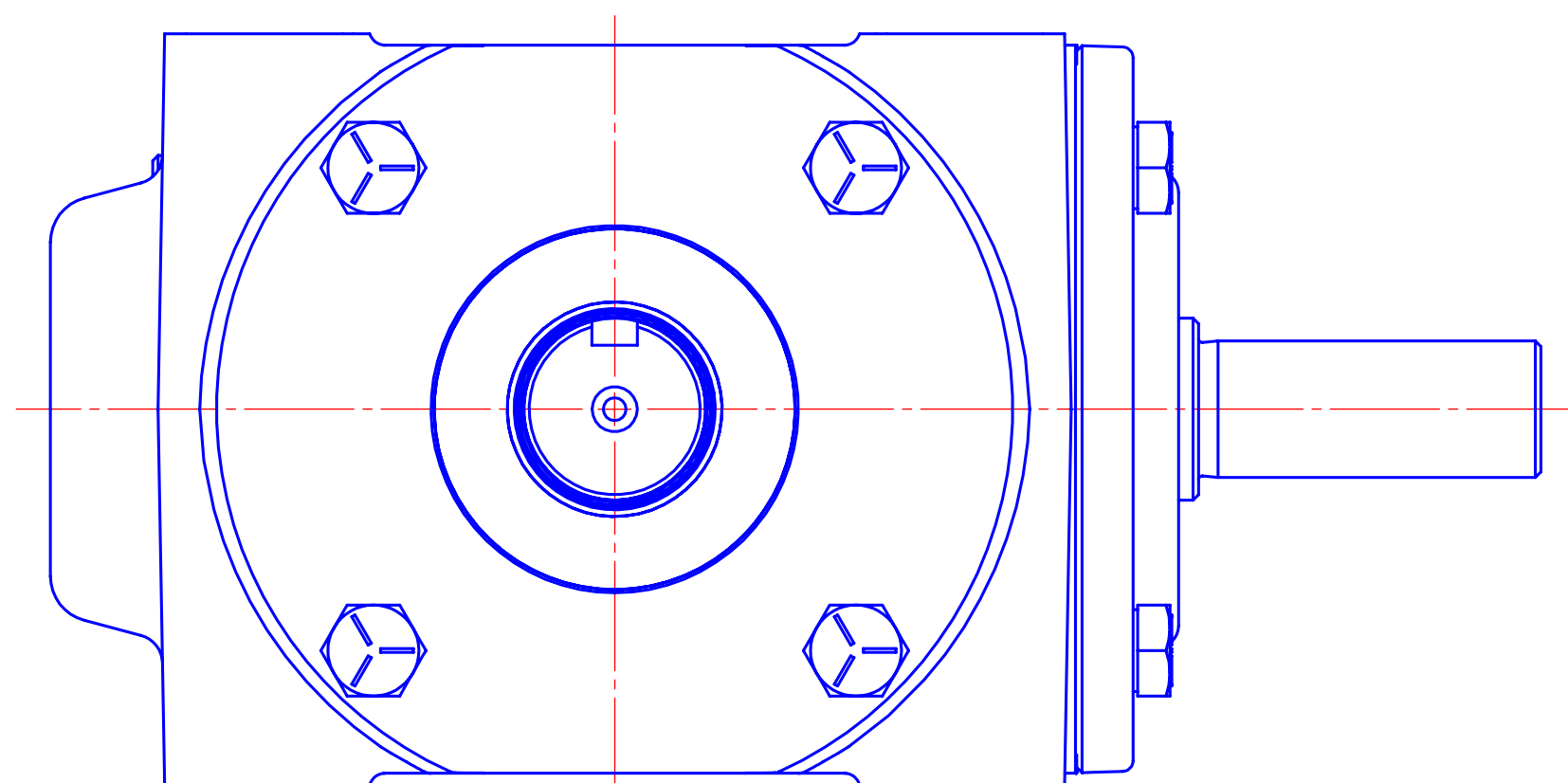


Diagram of a red Bevel Gear Box label. The label features the Browning logo at the top left, a website address, and a gear icon with the word MEMBER below it. The main title is BEVEL GEAR BOX. The label contains several fields for identification and specifications:

- PART NO.:** 9HB1-SF10 AY2243
- RATIO:** 1 : 1
- SERIAL NO.:** NR0004-YYMM
- AGMA LUBRICANT:**


AMB. TEMP.	COMPOSITION
15°-60°	# 2
50°-125°	# 4
- OIL CAPACITY:** 14 OZ.

A callout number 23 points to the top left corner of the label.

PTS - BROWNING
FLORENCE, KY
BOX #NR0004

- ## REFERENCE DRAWINGS

NOTE: NOT PLOTTED TO SCALE

ECO	DATE	LTR	REVISION	BY	ECO	DATE	LTR	REVISION	BY	DATE	 Regal-Beloit Corporation
0112910	11-15-16	A	PRODUCTION RELEASE	TLS						11-14-16	
										SCALE	
										1/1	
										DRAWN BY	
										TLS	
										CHECKED BY	
											NAME OF PART
											MODIFIED BEVEL GEAR DRIVE
											MATERIAL
											SEE BILL OF MATERIAL
											APPROVED BY
											MODEL: 9HB1 RATIO: 1/1 ST STYLE: SF