

PRODUCT INFORMATION PACKET



Model No: 6005
Catalog No: 6005

EVERGREEN® IM Fan and Blower Motor, 1/2 - 1/5 HP, 1 Ph, 60/50 Hz, 115/230 V, 1075 RPM, 1 Speed,
48 Frame, OPAO



Regal and Genteq are trademarks of Regal Rexnord Corporation or one of its affiliated companies.
©2025 Regal Rexnord Corporation, All Rights Reserved. MC017097E





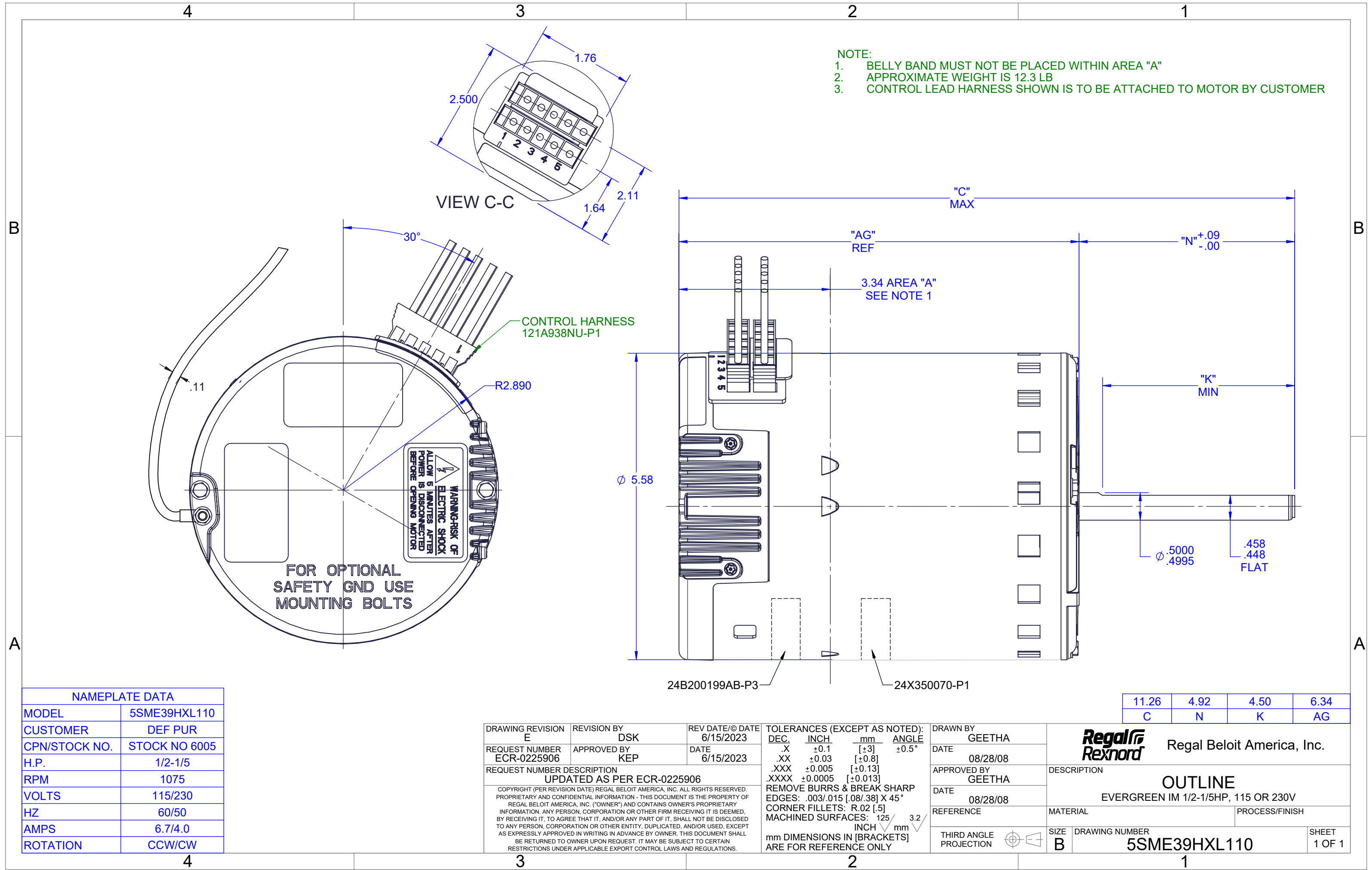
Nameplate Specifications

Phase	1	Output HP	1/2 - 1/5 Hp
Output KW	0.37 kW	Voltage	115/230 V
Speed	1075 rpm	Service Factor	1
Frame	48	Enclosure	Open Air Over
Thermal Protection	Electronically Protected	Ambient Temperature	40 °C
Frequency	60/50 Hz	Current	6.7/4.0 A
Duty	Continuous Air Over	Insulation Class	B
UL	No	CSA	N
CE	N	Number of Speeds	1

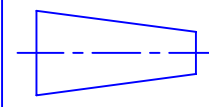
Technical Specifications

Electrical Type	Electronically Commutated Motor	Poles	12
Rotation	Counterclockwise/Clockwise	Mounting	Round
Motor Orientation	Hor	Drive End Bearing	Ball
Opp Drive End Bearing	Ball	Frame Material	Rolled Steel
Shaft Type	Flat	Overall Length	11.26 in
Frame Length	4.82 in	Shaft Diameter	0.500 in
Shaft Extension	4.92 in		
Outline Drawing	5SME39HXL110	Connection Drawing	NR

This is an uncontrolled document once printed or downloaded and is subject to change without notice. Date Created:06/18/2025



UNLESS OTHERWISE SPECIFIED
BREAK SHARP EDGES .015 [0.38] MAX.
CORNERS TO HAVE
.031 [0.79] MAX. FILLET
EXCEPT SNAP RING GROOVES



THIRD ANGLE
PROJECTION

ALL DIMENSIONS IN INCHES / [mm]
TOLERANCES UNLESS OTHERWISE SPECIFIED
DIMS. IN INCHES DIMS. IN [mm]

X.XX ±.010 X. ± [1.0]
X.XXX ±.005 X.X ± [0.25]
X.XXXX ±.005 X.XX ± [0.12]
X.XXX ±.005 X.XXX ± [0.12]

ANGLES ± 1°

THIS PRINT IS
CONFIDENTIAL
AND IS THE PROPERTY OF
REGAL-BELOIT CORPORATION.

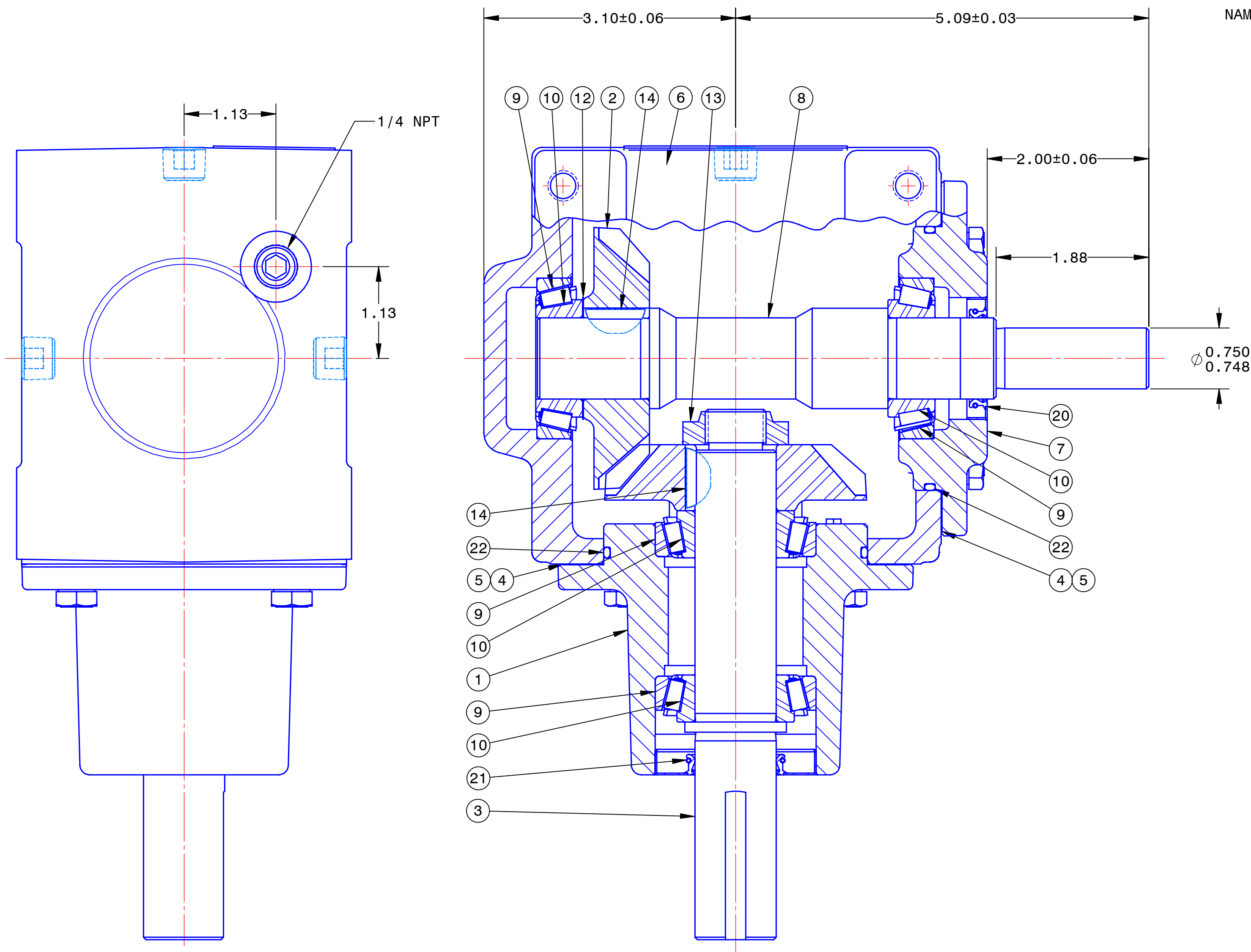
THIS PRINT SHALL NOT BE USED, COPIED
OR REPRODUCED IN WHOLE OR IN PART
NOR SHALL THE CONTENTS BE REVEALED
IN ANY MANNER TO ANYONE UNLESS
WRITTEN PERMISSION IS OBTAINED FROM
REGAL-BELOIT CORPORATION.

PART NO. **NR0004**

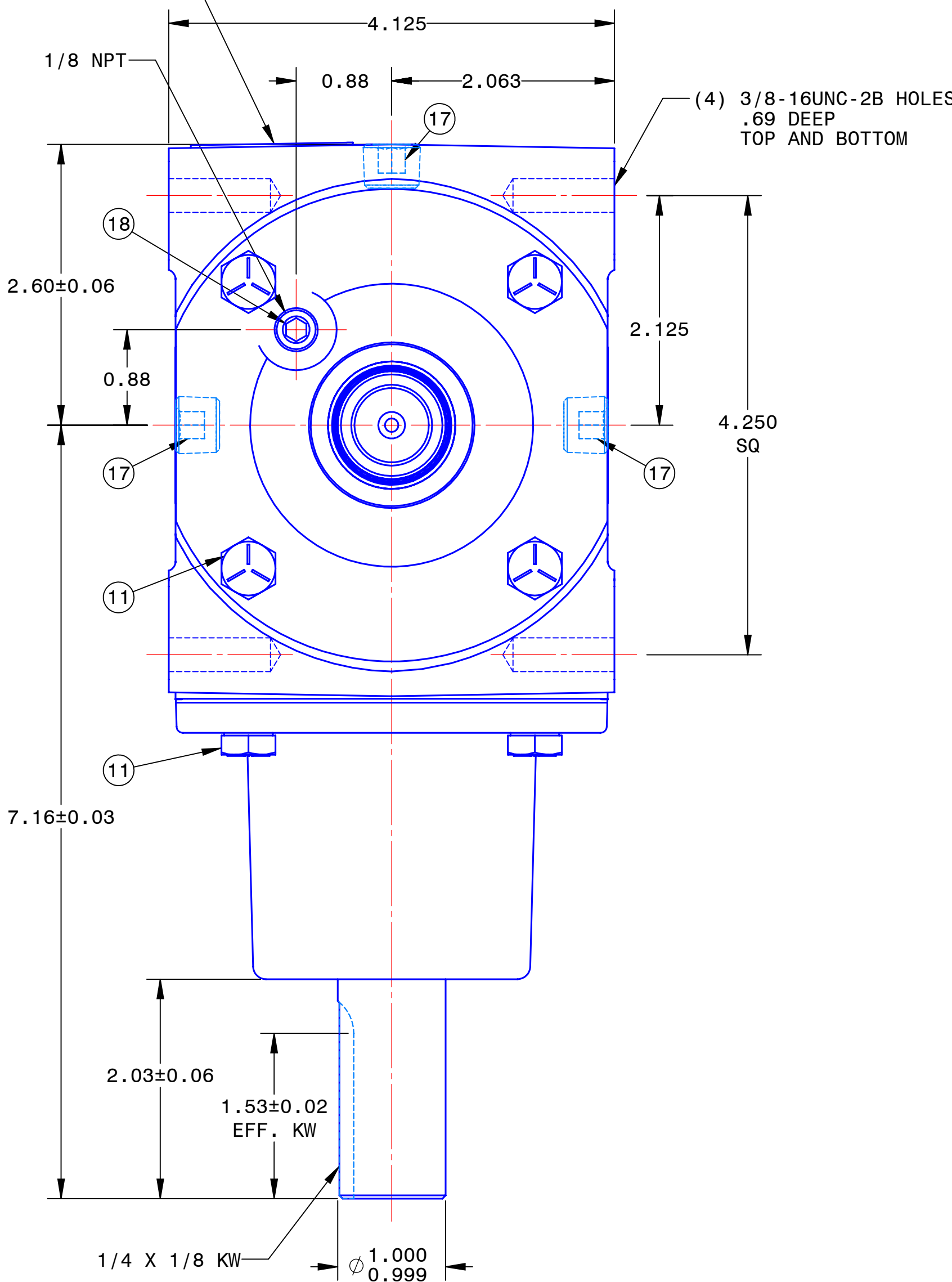
CUST. OR
VENDOR NO. **AY2243**

EXPTL NO. _____

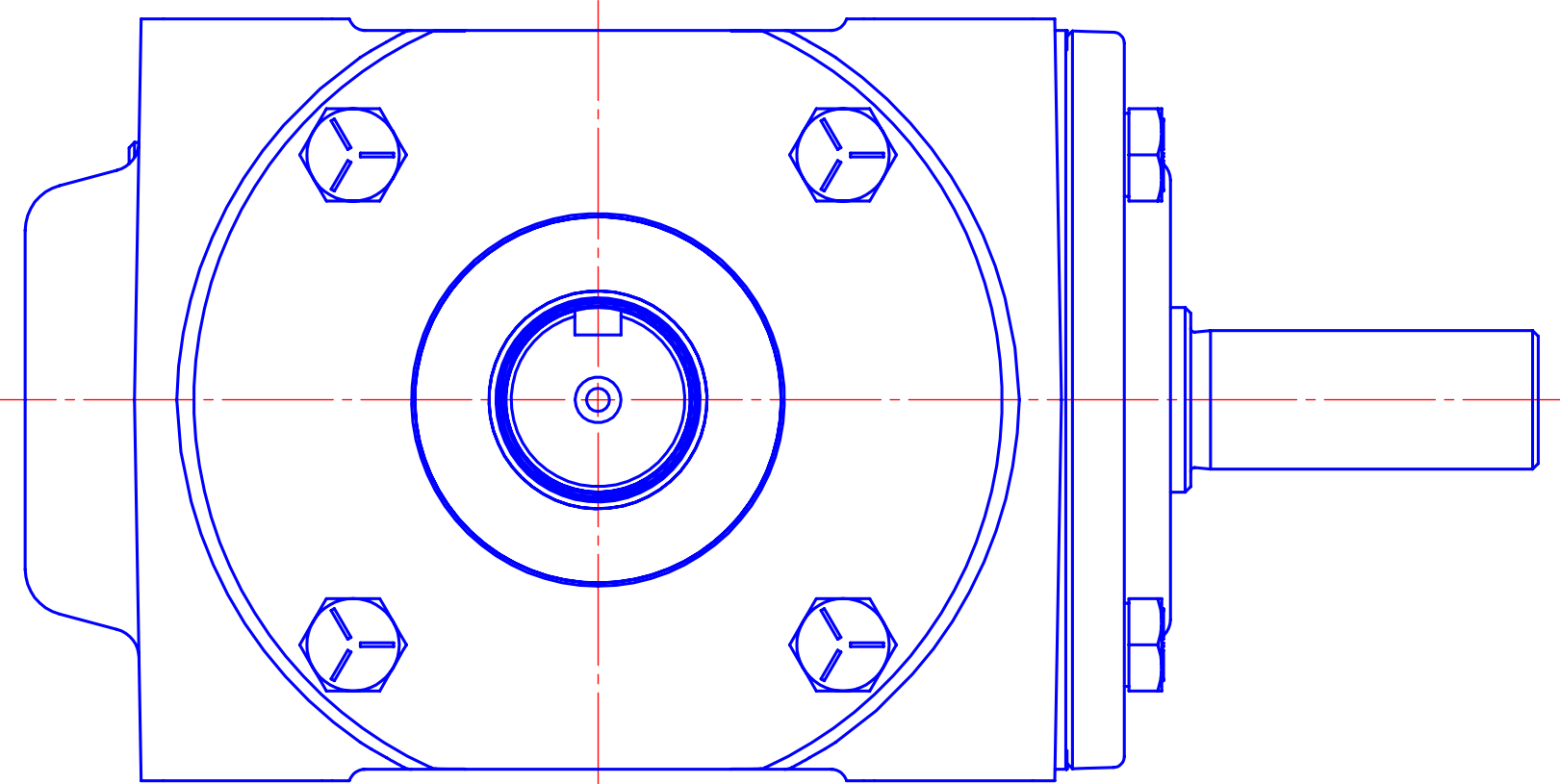
REV
A



NAMEPLATE LOCATION

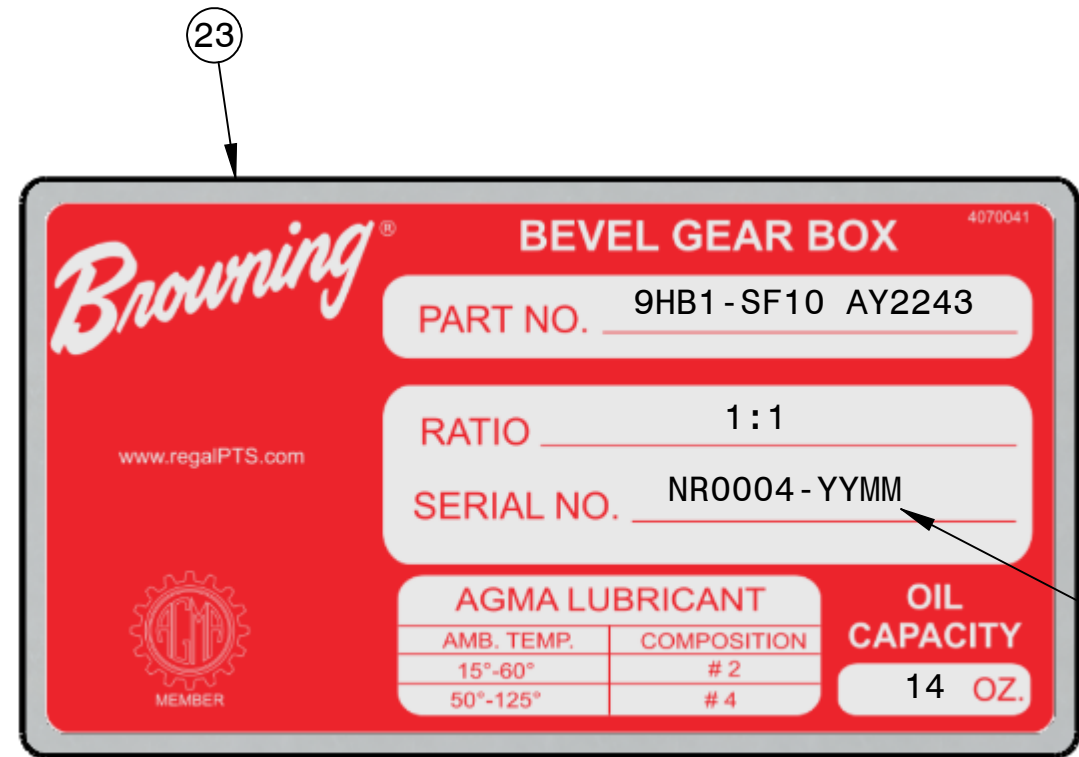


BILL OF MATERIAL				
ITEM	PART NUMBER	DESCRIPTION	UM	QTY
1	0223-00146	165 HOUSING, PINION	EA	1
2	0223-00147	GEAR, ST BEV 25T	EA	2
3	0223-00152	SHAFT, PINION	EA	1
4	0223-01229	150 SHIM, .005 BLUE	EA	4
5	0223-02693	150 SHIM, .002 RED	EA	4
6	0225-21054	150 SPEC HOUSING	EA	1
7	0225-21055	150 SPEC CAP, OPEN	EA	1
8	0225-21056	165 SPEC SHAFT, CROSS	EA	1
9	8322058002	CUP, BEARING (P2) L44610 OR EQ	EA	4
10	8322068002	CONE, BEARING (P2) L44643 OR EQ	EA	4
11	8471404027	SCREW, HEX CAP GR5 5/16NC X 3/4	EA	8
12	8471601147	SHIM, 1-1/64X1-1/2X.005	EA	1
13	8471614004	NUT, LOCK 3/4NF	EA	1
14	8471706004	KEY, WOODRUFF 1/4 X 3/4	EA	2
15	8610001060	PAINT, DARK GRAY	OZ	1
16	8631251001	BUSHING, PIPE 1/4X1/8NPT	EA	1
17	8631261001	PLUG, PIPE SOCKET 1/4NPT 7/8 TAPER	EA	4
18	8631261024	PLUG, PIPE SOCKET 1/8NPT 7/8 TAPER	EA	1
19	8631271001	PLUG, VENTED 1/8NPT 1-5 PSI BALL	EA	1
20	8742125021	SEAL, TCM 10142TB-H OR EQ	EA	1
21	8742128903	SEAL, TCM 10193TB-H OR EQ	EA	1
22	8748009059	O-RING, -151	EA	2
23	4070041	NAME PLATE, BROWNING	EA	1
24	7893E	LUBE/INSTALL DOCUMENT, BROWNING	EA	1



ASSEMBLY NOTES:

1. ADJUST ALL BEARINGS TO .001-.003 END PLAY.
2. ADJUST BACKLASH TO .002-.024 MEASURED AT THE GEAR PITCH DIAMETER OR .0006-.0077 AT THE OUTSIDE DIAMETER OF THE PINION SHAFT EXTENSION.
3. APPLY GREASE LIBERALLY ON SURFACE OF ALL O-RINGS BEFORE ASSEMBLY.
4. INSTALL PIPE PLUGS IN ALL NPT HOLES.
5. PAINT UNIT GRAY.
6. PLACE PIPE BUSHING, VENT AND BROWNING LUBE & INSTALL DOCUMENT IN BAG AND SHIP WITH UNIT.



DATE CODE

2X SACLE

PTS - BROWNING
FLORENCE, KY
BOX #NR0004

REFERENCE
DRAWINGS

NOTE: NOT PLOTTED TO SCALE

ECO	DATE	LTR	REVISION	BY	ECO	DATE	LTR	REVISION	BY	DATE	REGAL <i>Regal-Beloit Corporation</i>	
0112910	11-15-16	A	PRODUCTION RELEASE	TLS						11-14-16		
										SCALE	NAME OF PART	
										1/1		
										DRAWN BY	MODIFIED BEVEL GEAR DRIVE	
										TLS		
										CHECKED BY	SEE BILL OF MATERIAL	
										APPROVED BY	MODEL: 9HB1 RATIO: 1/1 ST STYLE: SF	