

# PRODUCT INFORMATION PACKET



Model No: 5SCC39KLP5014I-P

Catalog No: 5SCC39KLP5014I-P

REY BUILT - MTR FROM INDIA - 3/4 HP,200-1400 RPM,120/240/277 VOLTS,60/50 HZ,CCW/CW

Regal and Genteq are trademarks of Regal Rexnord Corporation or one of its affiliated companies.  
©2025 Regal Rexnord Corporation, All Rights Reserved. MC017097E





**Nameplate Specifications**

Phase	1	Output HP	3/4 Hp
Voltage	120/240/277 V	Speed	200-1400 rpm
Service Factor	1	Frame	48
Enclosure	Open Air Over	Thermal Protection	No Protection
Ambient Temperature	40 °C	Frequency	60/50 Hz
Current	N/R A	Duty	Continuous Air Over
Insulation Class	B	UL	No
CSA	N	CE	N
Number of Speeds	1		

**Technical Specifications**

Electrical Type	Electronically Commutated Motor	Poles	10
Rotation	Counterclockwise/Clockwise	Mounting	Round
Motor Orientation	Hor	Drive End Bearing	Ball
Opp Drive End Bearing	Ball	Frame Material	Rolled Steel
Shaft Type	Flat	Overall Length	11.25 in
Frame Length	3.82 in	Shaft Diameter	0.500 in
Shaft Extension	4.50 in		
Connection Drawing	N/R	Outline Drawing	5SCC39KLP5014I

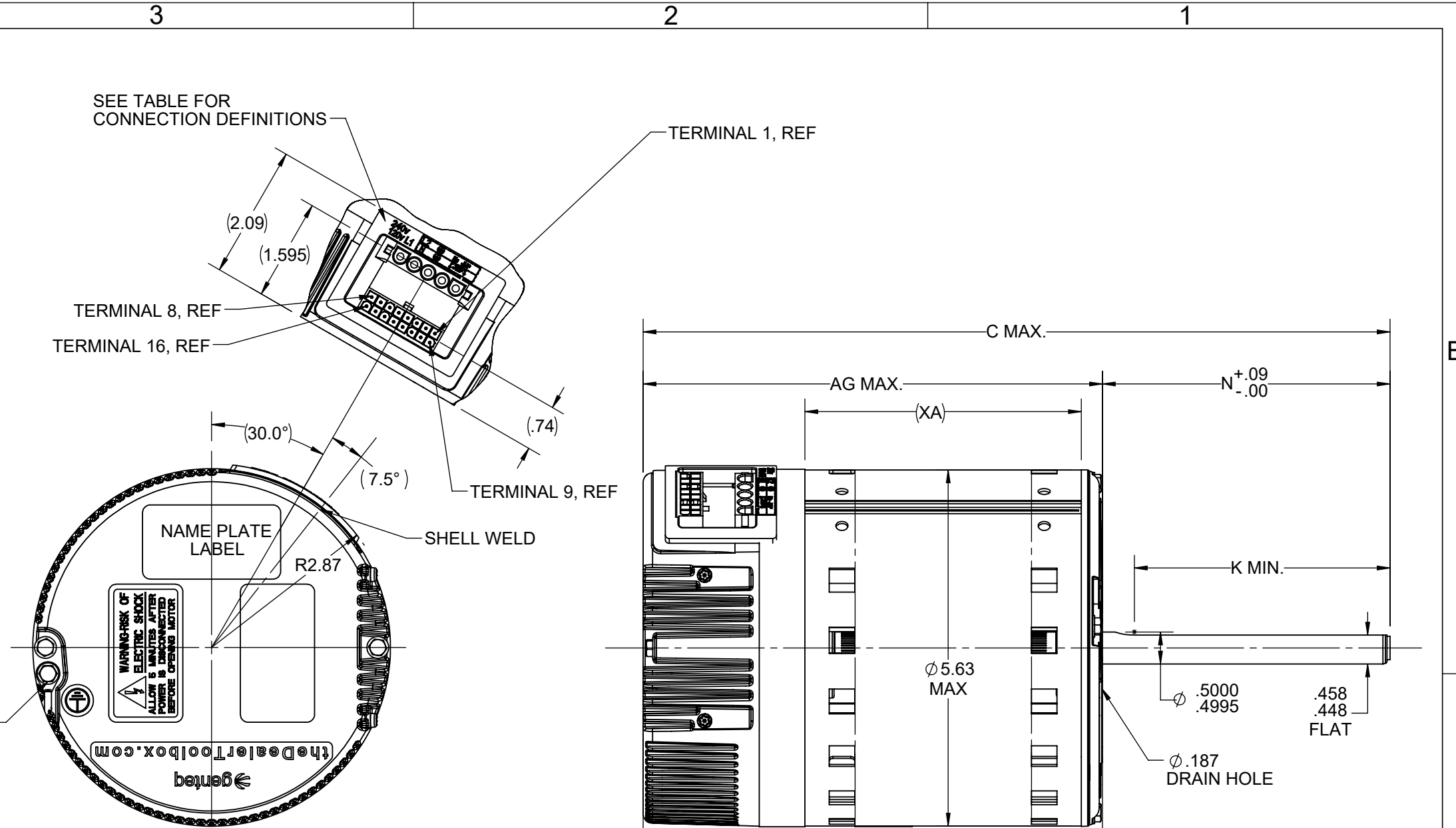
This is an uncontrolled document once printed or downloaded and is subject to change without notice. Date Created:06/19/2025

L1	AC LINE	POWER TERMINALS
N	AC LINE	
	GROUND	
JMP	120 VAC: USE LINE INPUT JUMPER 240 VAC OR 270 VAC: NO JUMPER SEE NOTE #4	SIGNAL TO TERMINALS
1	C1	
2	W/W1	
3	C2	
4	DELAY	
5	COOL	
6	Y1	
7	ADJUST	
8	OUT-	
9	O	
10	BK/PWM	
11	HEAT	
12	R	
13	EM/W2	
14	Y1/Y2	
15	G	
16	OUT+	

NAMEPLATE DATA	
MODEL	5SCC39KLP5014
CUSTOMER NAME	ALL
STOCK #	N/R
H.P.	3/4
RPM	200-1400
VOLTS	120/240/277
HZ	60/50
AMPS	N/R
ROTATION	CCW/CW

VENTILATION SYSTEM	
SHELL VENTS	OPEN
ENDSHIELD (LE)	NA
ENDSHIELD (OLE)	CLOSED

- NOTES:
- BELLY BAND MUST BE PLACED WITHIN AREA "A" ONLY (STK. + .12).
  - OPTIONAL EXTERNAL #8 SELF TAPPING GROUND SCREW AND TERMINAL MAY BE PROVIDED BY CUSTOMER AT LOCATION SHOWN.
  - DIMENSIONS IN PARENTHESES ARE FOR REFERENCE ONLY.
  - WARNING: APPLYING 240VAC OR 277VAC LINE INPUT WITH JUMPER APPLIED WILL PERMANENTLY DAMAGE UNIT.



DRAWING REVISION E	REVISION BY TRSK	REV DATE/© DATE 2/12/2021
ECO ECR-0207410	APPROVED BY VB	DATE 2/12/2021
ECO DESCRIPTION REMOVED NP AMPS PER ECR		
<small>COPYRIGHT (PER REVISION DATE) REGAL BELOIT AMERICA, INC. ALL RIGHTS RESERVED. PROPRIETARY AND CONFIDENTIAL INFORMATION - THIS DOCUMENT IS THE PROPERTY OF REGAL BELOIT AMERICA, INC. ("OWNER") AND CONTAINS OWNER'S PROPRIETARY INFORMATION. ANY PERSON, CORPORATION OR OTHER FIRM RECEIVING IT IS DEEMED, BY RECEIVING IT, TO AGREE THAT IT, AND/OR ANY PART OF IT, SHALL NOT BE DISCLOSED TO ANY PERSON, CORPORATION OR OTHER ENTITY, DUPLICATED, AND/OR USED, EXCEPT AS EXPRESSLY APPROVED IN WRITING IN ADVANCE BY OWNER. THIS DOCUMENT SHALL BE RETURNED TO OWNER UPON REQUEST. IT MAY BE SUBJECT TO CERTAIN RESTRICTIONS UNDER APPLICABLE EXPORT CONTROL LAWS AND REGULATIONS.</small>		

PRIMARY DIMENSIONS ARE INCH  
mm DIMENSIONS IN [BRACKETS]  
ARE FOR REFERENCE ONLY

DRAWN BY VB	Regal Beloit America, Inc.
DATE 02/18/2020	
APPROVED BY JOSH	DESCRIPTION <b>OUTLINE</b> EON
DATE 02/18/2020	MATERIAL
REFERENCE	PROCESS/FINISH
THIRD ANGLE PROJECTION	SIZE B
	DRAWING NUMBER <b>5SCC39KLP5014</b>
	SHEET 1 OF 1

11.25	4.50	4.00	3.82	6.72	1.87
C	N	K	XA	AG	A

# Winding and Test Specification

**WTS # 24X333741-1**

Revision # 4

Rev. Date : Feb 01,  
2017

First Made for : SPOKEDALEON

### WTS Nameplate Data

<b>Horsepower</b>	3/4	<b>RPM</b>	1050
<b>Voltage</b>	115/230	<b>Amps</b>	8.40 6.00
<b>Frequency</b>	60/50	<b>Phases</b>	1
<b>Capacitor</b>		<b>Cap Volts</b>	

**Test Volts :** **Low Spd St Volts :**  
**Test Frequency :**  
**Test Instructions :** 24A105040AA-P1

### Winding

### Resistance

	Min	Nominal	Max
	<b>Main *</b>	1.79	1.88
<b>X Main</b>	1.79	1.88	1.97
<b>Y Main</b>			
<b>Z Main</b>			
<b>W Main</b>			
<b>Start</b>	1.79	1.88	1.97

### N. L. Performance Data

	Amps	Watts		Cap. Volts
	Nominal	Nominal	Max	
	<b>High</b>			
<b>Med. High</b>				
<b>Medium</b>				
<b>Med. Low</b>				
<b>Low</b>				

### Full Load Performance

Amps		Watts		Speed	Torque	
Nominal	Max	Nominal	Max	Nominal	Min	Nominal

### Max. Torque

	RPM	Torque	
		Min	Nominal
	<b>High</b>		
<b>Med. High</b>			
<b>Medium</b>			
<b>Med. Low</b>			
<b>Low</b>			

### Locked Rotor

Amps	Watts	Torque
Nominal	Nominal	Nominal

### Customer/Special Load Points

	Speed	Torque		Watts		Amps	
	Nominal	Min	Nominal	Nominal	Max	Nominal	Max
	<b>High</b>						
<b>Med. High</b>							
<b>Medium</b>							
<b>Med. Low</b>							
<b>Low</b>							

\* Large wire size may be double stranded.





# Motor Model Search

## Motor Details



<b>Model :</b>	<b>5SCC39KLP5014I</b>	<b>Catalog Number :</b>	<b>N/A</b>
<b>General:</b>			
Application :	<b>INDOOR INT CONTROL</b>	Motor Category :	<b>COMPLETE MOTOR</b>
Phases :	<b>1</b>	Production Status :	<b>PROD</b>
# of Speeds :	<b>1</b>	Stock Status :	
Testspec :	<b>24X333741-1</b>	Approved For Sale :	
Horiz/Vertical :	<b>HOR</b>	Restricted Model :	
Shell Enclosure :	<b>OPEN</b>	Customer :	<b>ALL</b>
Endshield Enclosure :	<b>CLOSED</b>	Customer Part# :	<b>N/R</b>
<b>Nameplate Data:</b>			
Horsepower :	<b>3/4</b>	GE Type :	<b>SME</b>
RPM :	<b>200-1400</b>	Time Rating :	<b>CAO</b>
Voltage :	<b>120/240/277</b>	Frequency :	<b>60/50</b>
FL Amps :	<b>N/R</b>	Insulation Class:	<b>B</b>
Capacitor 1mFd/V :	<b>N/R</b>	Capacitor 2mFd/V :	<b>N/R</b>
Additional Information :	<b>N/R</b>		
<b>Miscellaneous:</b>			
Fullload RPM - HI :		GE Frame :	<b>39</b>
Poles :	<b>10</b>	Shell Length :	<b>3.82</b>
Rotation :	<b>CCW/CW</b>	Drains :	<b>Y</b>
Thermal Protection :		Est. Weight :	<b>13</b>
Finish Color:	<b>STD GRAY</b>	Capacitor By :	<b>N/R</b>
<b>OVERLOAD INFORMATION::</b>			
Protector:	<b>N/R</b>	Overload Temp :	<b>N/A</b>
Catalog No:	<b>N/A</b>	Vendor Name:	<b>N/A</b>
<b>THERMAL CUT-OFF INFORMATION:</b>			
TCO:	<b>N/A</b>	Overload Temp :	<b>N/A</b>
Catalog No:	<b>N/A</b>	Vendor Name:	<b>N/A</b>
<b>U.L.CONSTRUCTION FILES:</b>			
Motor Construction:	<b>E46035(excluding SME)</b>	Class B Insulation :	<b>E306343(excluding SME)</b>
Over Load :	<b>E27885(excluding SME)</b>	CSA(REY) :	<b>MC236833(excluding SME)</b>
<b>Shaft:</b>			
PE Type :	<b>FLAT</b>	OPE Type :	<b>N/R</b>
PE Length :	<b>4.50</b>	OPE Length :	<b>N/R</b>
PE Diameter :		OPE Diameter :	
PE Flat Length :	<b>4.00</b>	OPE Flat Length :	<b>N/R</b>
<b>Endshields:</b>			
PE Material :	<b>AL</b>	OPE Material :	<b>AL</b>
PE Hub Type :	<b>FLAT</b>	OPE Hub Type :	<b>FLAT</b>
PE Oiler :	<b>N/R</b>	OPE Oiler :	<b>N/R</b>
PE Oil Plug :	<b>N/R</b>	OPE Oil Plug :	<b>N/R</b>
PE Mounting Holes :	<b>N/R</b>	OPE Mounting Holes :	<b>N/R</b>
<b>Bearings:</b>			
PE Bearing Type :	<b>BALL</b>	OPE Bearing Type :	<b>BALL</b>
Bearing Protection :	<b>No</b>	Rohs Compliant :	<b>No</b>
<b>Mounting:</b>			
Base :	<b>N/R</b>	Lug :	<b>N/R</b>
Clamp Screw :	<b>Yes</b>	Weld Screw :	<b>No</b>
<b>Extended Clamp Screws:</b>			
PE Pattern :		OPE Pattern :	
PE Length :	<b>0</b>	OPE Length :	<b>0</b>
PE Nut Qty :	<b>0</b>	OPE Nut Qty :	<b>0</b>
Head End :	<b>PE</b>	Screw Size :	<b>#8</b>
Nut Thickness :	<b>N/R</b>		
<b>Lead &amp; Cord :</b>			
Lead End :	<b>OPE</b>	Lead Type :	<b>TERM BLOCK</b>
Lead Exit H/W :	<b>N/R</b>	Lead Harness Desc :	<b>N/R</b>
Lead Exit H/W Orient. :	<b>N/R</b>		

**Note :** Exit position is viewed from the Lead End with the Shell Weld at 6:00.

### Terminal Block :

Type :	<b>N/R</b>	Qty :	<b>0</b>
--------	------------	-------	----------

Termination : N/R  
Location 1 : N/R

Label 1 : N/R

**Grounding :**

Type : N/R  
Exit Type : N/R  
Length : N/R  
Terminal : N/R

Location : N/R viewed from N/R with Oil boss at 12:00  
AWG Size : 0  
Color : N/R  
Ins.Material & Thickness N/R N/R

**Diagrams and Dimensions :**

Outline Drawing :  
Connection Diagram : 423B631 Fig# 35

C-Dimension :  
Connection Label : N/R

**Notes :**

**This document is the property of the Regal Beloit Company containing proprietary and confidential information.**

Date of last revision : 11-MAY-23

