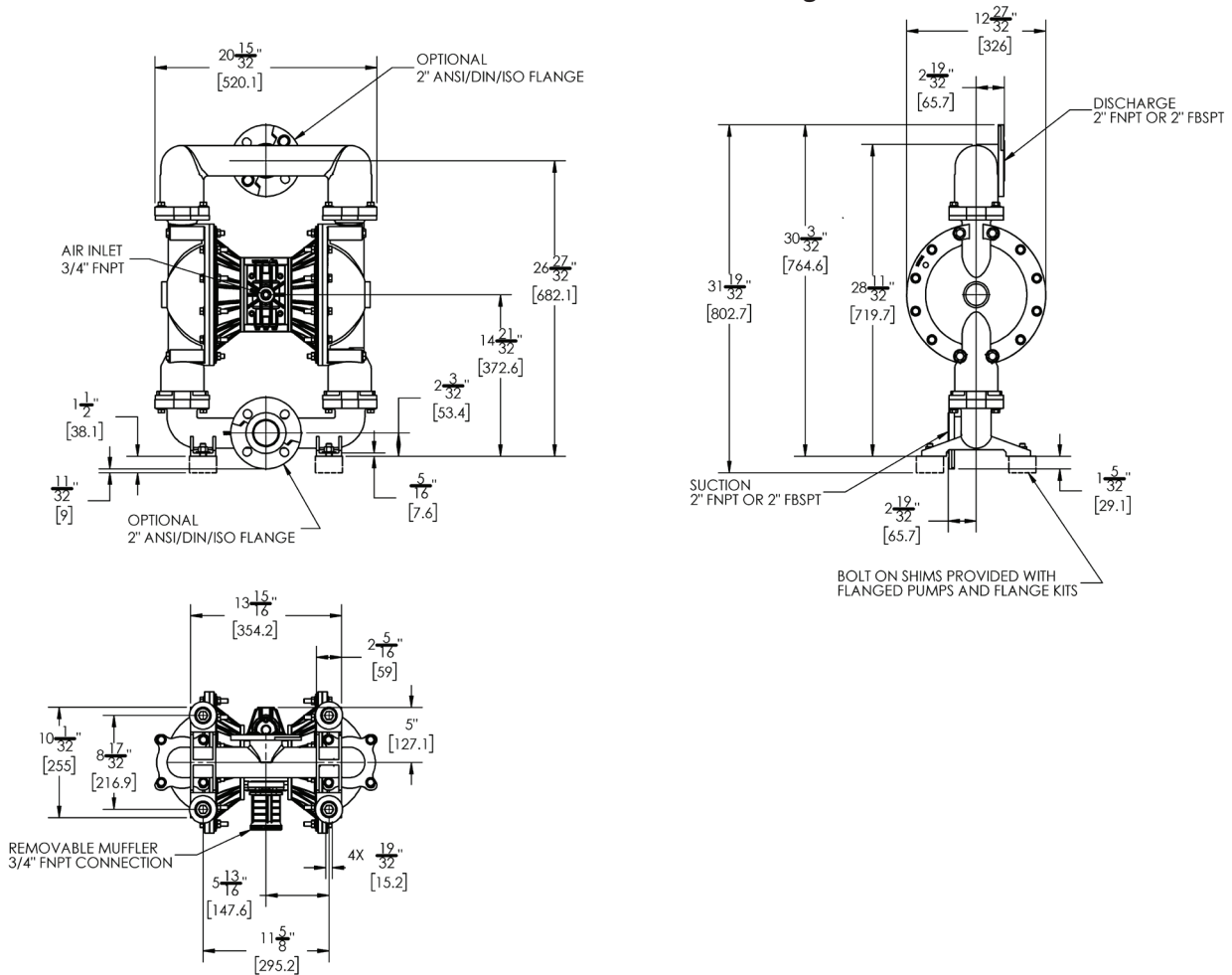


# FT20S Dimensional Drawing



## Model Number Explanation & Example Part Numbers

PART #	XX	XX	X	-	X	-	X	X	X	-	X	X	-	X
	Series	Pump Size	Wetted Material		Non-wetted Material	Air Valve Material	Diaphragm Material	Check Valve Ball	Check Valve Seat		Seat O-ring	Connection	Porting Location	Specials

### Series\*

FT - Pump End  
FW - Wet End

### Pump Size\*

20 - 2"

### Wetted Materials\*

A - Aluminum  
S - 316SS, FDA

### Non-wetted Materials

P - GFRPP      A - Aluminum\*\*

### Air Valve Materials

P - GFRPP      A - Aluminum\*\*

### Diaphragm Materials\*

N - Neoprene      1 - PTFE/Neoprene  
B - Buna-N, FDA      2 - PTFE/Santoprene  
E - EPDM      3 - PTFE/Buna-N, FDA  
F - FKM      4 - PTFE/Santoprene, FDA  
R - Santoprene      5 - Santoprene, FDA  
U - Polyurethane      6 - Hytrel, FDA  
H - Hytrel

### Check Valve Ball Materials\*

N - Neoprene      F - FKM  
B - Buna-N      T - PTFE, FDA  
E - EPDM      W - Weighted PTFE, FDA  
S - 316SS, FDA      5 - Santoprene, FDA  
R - Santoprene

### Check Valve Seat Materials\*

A - Aluminum      S - 316SS, FDA  
T - PTFE, FDA      B - Buna-N  
F - FKM      E - EPDM  
R - Santoprene      H - Hytrel  
N - Neoprene      U - Polyurethane

### Check Valve Seat O-Ring Materials\*

N - Neoprene      F - FKM  
B - Buna-N      E - EPDM  
C - FEP/FKM, FDA      O - None  
T - PTFE, FDA

### Connection

N - FNPT      B - FBSP  
F - ANSI/DIN/ISO Flange      T - Tri-Clamp

### Porting location

2 - Center horizontal

### Specials

A - ATEX      M1 - Metal muffler  
P1 - Halogenated hydro-carbon compatible      M2 - Oversized metal muffler

\*Required for wet end  
\*\*Required for ATEX

Example Pump P/N's: FT20A-AA-NNAN-N2, FT20A-PP-BBAB-B2, FT20S-AA-1TST-F2, FT20S-PP-EESE-B2

Example Wet End P/N's: FW20A-NNAN, FW20A-BBAB, FW20S-1TST, FW20S-EESE