

ELKAY® SPECIFICATIONS

Filtered Wall Mount Water Cooler Models LZS8S3JOSA

PRODUCT SPECIFICATION

Self-contained, wall mount single electric water cooler. Refrigerated LZS8S3JOSA models offer a chilling capacity of 8 gallons per hour of 50°F drinking water, based upon 80°F inlet water and 90°F ambient. Shall include the WaterSentry® VII 1500-gallon capacity filter, certified to NSF/ANSI 42 and 53. Unit shall meet ADA guidelines. Unit shall be lead-free design which is certified to NSF/ANSI 61 and 372 and meets Federal and State low-lead requirements. Unit shall comply with ASME A 112.19.3 / CSA B45.4.

**RATED FOR INDOOR USE ONLY
ONLY AVAILABLE FOR SAUDI ARABIA**



STANDARD FEATURES

- Easy-Touch pushbar activation
- WaterSentry® VII 1500-gallon capacity Filtration System, certified to NSF/ANSI 42 & 53 (Lead, Class 1 Particulate, Chlorine, Taste & Odor)
- Extra deep basin minimizes splashing; with integral drain
- Exclusive Flexi-Guard® Safety bubbler
- Valve with built-in flow regulator to provide constant stream from 20 to 105 psi water pressure
- Cooler Panel Finish: Stainless Steel wrapper
- Rated for Indoor use

COOLING SYSTEM

- Compressor: Hermetically-sealed, reciprocating type, single phase. Sealed-in lifetime lubrication.
- Condenser: Fan cooled, copper tube with aluminum fins. Fan motor is permanently lubricated.
- Cooling Unit: Tube type. Self-cleansing. Continuous Copper tubing which is fully insulated with EPS foam that meets UL requirements for self-extinguishing material
- Refrigerant Control: Refrigerant R134a is controlled by accurately calibrated capillary tube.
- Temperature Control: Easily accessible enclosed adjustable thermostat is factory preset. Requires no adjustment other than for altitude requirements.




CONSTRUCTION

- Stainless Steel basin with integral drain
- Galvanized structural steel cooler chassis provides structural integrity
- Cooler cabinet is Stainless Steel
- Exclusive Flexi-Guard® Safety bubbler utilizes an infused anti-microbial pliable polyester elastomer to prevent accidental mouth injuries. Flexes on impact.

REPLACEMENT FILTER:

- 51299C (single)

Warranty: 5 year limited warranty on the unit's refrigeration system. Electrical components and water system are warranted for 12 months from date of installation or 18 months from factory shipment, whichever date falls first.

| CAPACITIES CHART | | | | | |  |  TÜVRheinland® Tested by: |  C USA | |
|------------------|-----------------|---------------------|-----------|-------------|------------------|---|--|--|--|
| Model | Voltage / Hertz | Chilling** Capacity | F.L. Amps | Rated Watts | Approx. Ship Wt. | ADA COMPLIANT | SASO 1062 (SASO/IEC 60335-1) & SASO/IEC 60335-2-89 Compliant | NSF/ANSI 61 and 372 Certified | NSF/ANSI 42 and 53 Certified (Filter only) |
| LZS8S3JOSA | 220V / 60Hz | 8 GPH | 2.0 | 370 | 54 lbs | • | • | • | • |

**Based on 80°F inlet water & 90°F ambient air temp for 50°F chilled drinking water.

This specification describes an Elkay product with design, quality and functional benefits to the user. When making a comparison of other producer's offerings, be certain these features are not overlooked.

**Filtered
Wall Mount Water Cooler
Models LZS8S3JOSA**

**ELKAY®
ROUGH-IN DIMENSIONS**

**RATED FOR INDOOR USE ONLY
ONLY AVAILABLE FOR SAUDI ARABIA**

Open space rough-in design permits new installation or replacement of existing fountains and coolers with this Elkay cooler when rough-in is within the outline shown.

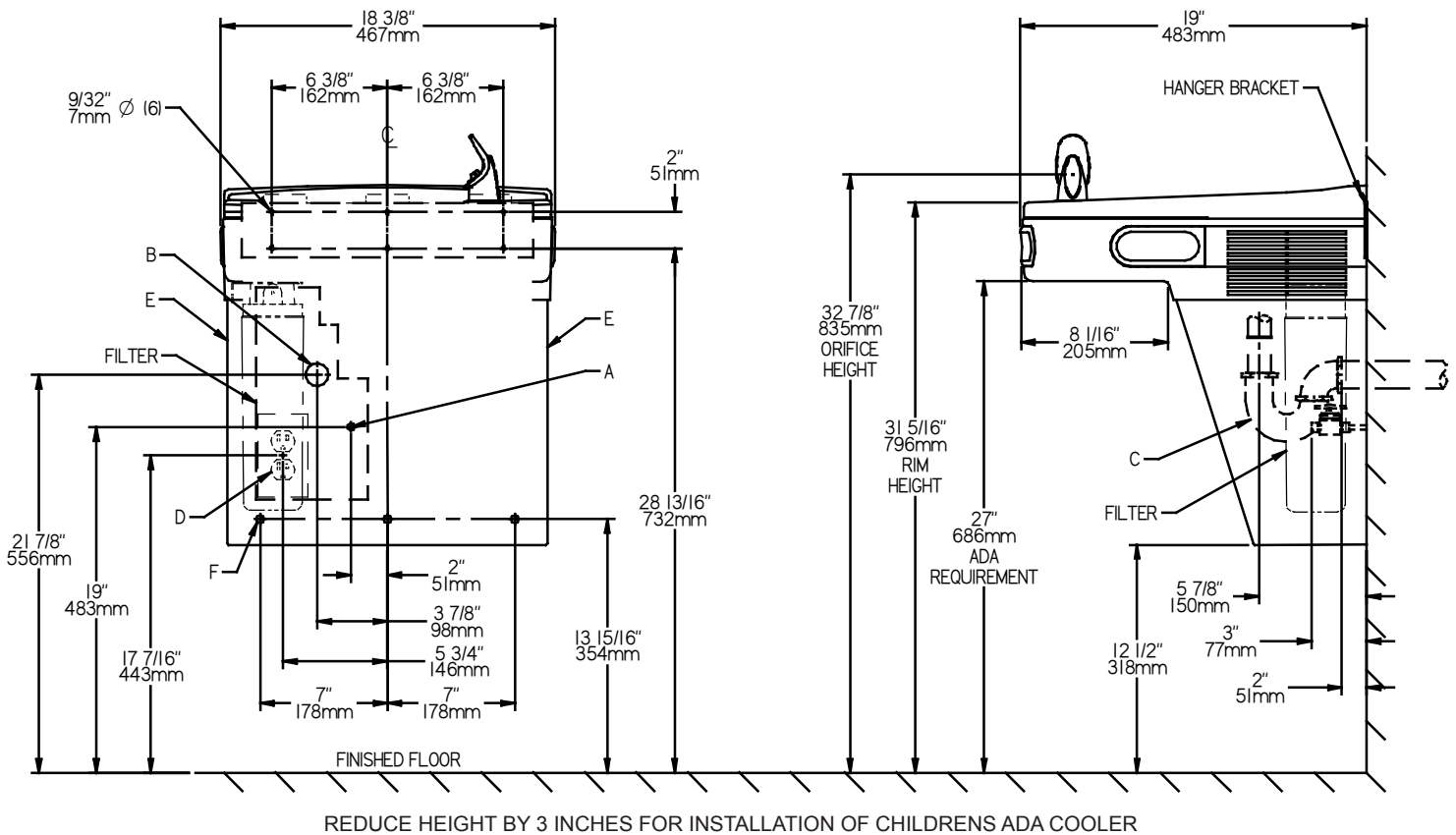
IMPORTANT! INSTALLER PLEASE NOTE:

This water cooler has been designed and built to provide water to the user which has not been altered by materials in the cooler waterways.

The grounding of electrical equipment such as telephone, computers, etc to water lines is a common procedure. This grounding may be in the building or occur away from the building. This grounding can cause electrical feedback into a water cooler creating an electrolysis which creates a metallic taste or causes an increase in the metal content of the water. This condition is avoidable by installing the cooler using the proper materials as shown below.

NOTICE

This water cooler must be connected to the water supply using a dielectric coupling. The cooler is furnished with a non-metallic strainer which meets this requirement. The drain trap, which is provided by the installer, should also be plastic to completely isolate the cooler from the building plumbing system.



LEGEND:

- A = Recommended Water Supply location. Shut-off Valve (not furnished) to accept 3/8" O.D. unplated copper tube. Up to 3" (76mm) maximum out from wall.
- B = Recommended Waste Outlet location. To accommodate 1-1/4" nominal drain. Drain stub 2" (51mm) out from wall.
- C = 1-1/4" Trap (not furnished).
- D = Electrical Supply (3) Wire Recessed Box Duplex Outlet.
- E = Insure proper ventilation by maintaining 6" (152mm) minimum clearance from cabinet louvers to wall.
- F = 7/16" (11mm) Bolt Holes for fastening to wall.

NOTE: New Installations Must Use Ground Fault Circuit Interrupter (GFCI)

| | |
|---------------------------|------------|
| Job Name: _____ | |
| Model: _____ | Qty. _____ |
| Contact: _____ | |
| Approval Signature: _____ | |
| Notes: _____ | |