

Beacons

Steady-On Incandescent

125 Class



Edwards 125 Class standard steady-on Incandescent beacons are NEMA Type 4X signaling devices, suitable for indoor or outdoor applications where a continuous (steady-on) light source is required. Base material is gray or black, manufactured from a 33% glass filled nylon, providing a high resistance to heat and chemicals. The lens is made of shatter-resistant polycarbonate.

Features and Specifications

- Incandescent light source
- Shatter-resistant polycarbonate lens
- Gray or black glass filled nylon base
- Suitable for use in indoor or outdoor applications
- NEMA Type 4X enclosure
- Option for panel or conduit mounting
- Operating temperature range: -31°F to 150°F (-35°C to 66°C)



3.25"



Ordering Information

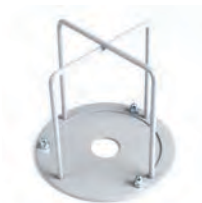
Description	Cat. No.	Operating Voltage ¹	Current	Lens Colors	Replacement	
					Lens	Lamp
Steady-on Beacon Incandescent Grey Base	125INCSA120A	120V AC	0.15 A	Amber	125LA	Industry Trade 15T7DC ²
	125INCSB120A	120V AC	0.15 A	Blue	125LB	
	125INCSA120A	120V AC	0.15 A	Clear	125LC	
	125INCSG120A	120V AC	0.15 A	Green	125LG	
	125INCSR120A	120V AC	0.15 A	Red	125LR	
	125INCSA24D	24V DC	0.610 A	Amber	125LA	Industry Trade 1692 ²
	125INCSB24D	24V DC	0.610 A	Blue	125LB	
	125INCSA24D	24V DC	0.610 A	Clear	125LC	
	125INCSG24D	24V DC	0.610 A	Green	125LG	
	125INCSR24D	24V DC	0.610 A	Red	125LR	
Steady-on Beacon Incandescent Black Base	125INCSA120AB	120V AC	0.15 A	Amber	125LA	Industry Trade 15T7DC ²
	125INCSB120AB	120V AC	0.15 A	Blue	125LB	
	125INCSA120AB	120V AC	0.15 A	Clear	125LC	
	125INCSG120AB	120V AC	0.15 A	Green	125LG	
	125INCSR120AB	120V AC	0.15 A	Red	125LR	
	125INCSA24DB	24V DC	0.610 A	Amber	125LA	Industry Trade 1692 ²
	125INCSB24DB	24V DC	0.610 A	Blue	125LB	
	125INCSA24DB	24V DC	0.610 A	Clear	125LC	
	125INCSG24DB	24V DC	0.610 A	Green	125LG	
	125INCSR24DB	24V DC	0.610 A	Red	125LR	

¹AC voltage frequency is 50/60 Hz

²User supplied

Accessories

Description	Cat. No.
Protective Wire Guard	125GRD



Beacons

Steady-On Incandescent

125 Class

Signal Input Load Characteristics

These devices may be operated by PLCs with output characteristics that match the input load requirements of the signal.

Cat. No.**	Operating Voltage ¹	Max. Off State Leakage Current (A)	Continuous On Current (A)	Surge (inrush/duration)
125INCS*120A	120V AC	0.025	0.15 A	0.8 A Exponentially Decaying
125INCS*24D	24V DC	0.025	0.61 A	7 A Exponentially Decaying

*Letter in this position designates lens color: A - amber, B - blue, C - clear, G - green, or R - red

**Applies to all models with any lens color and with either a gray or black base.

¹AC voltage frequency is 50/60 Hz

Weights and Dimensions

Cat. No.	Approx. Net Weight (lb.)	Approx. Shipping Weight (lb.)
125INCS*24D	0.40	0.50
125INCS*120A	0.40	0.50
125INCS*24DB	0.40	0.50
125INCS*120AB	0.40	0.50
125GRD	0.61	0.77

*Letter in this position designates lens color: A - amber, B - blue, C - clear, G - green or R - red

