

Cooper B-Line manufactures high quality cable management products that are designed for modern, high performance network cabling. Our patented RCM+™ cable management product family is one of the most feature rich cable management systems in the industry offering the user a simple, modular and easy-to-install system. RCM+ features effective cable management options with built-in flexibility to address any structured cabling platform and a competitive installed cost profile. Further, our design is aesthetically pleasing and complements the high-tech look of today's high performance networks. With multiple options for width, height and depth, RCM+ has all the configurations you need for your rack mounted cable management requirements.

All cable management devices are designed to meet or exceed all applicable industry standards and requirements of applicable TIA/EIA standards that reference cable management products. Many of Cooper B-Line's cable management products - including the RCM+ cable managers - are UL listed as well.

Cooper B-Line also manufactures a wide variety of other cable management products including gated vertical cable managers, troughs, wire basket cable trays, patch cord organizers, cable management spools, Velcro cable straps and other common accessories. Whatever the application, from copper to fiber, Cooper B-Line has the cable management products you need to tackle any cabling pathway requirement.

Are we missing a component you need? Contact us. Our engineering team will be glad to discuss your needs and provide a design for your specific application. Our goal is to be your preferred supplier for all your comm/data equipment support needs.

<b>Material:</b>	<b>Type</b>	<b>Thickness</b>	<b>Specifications</b>
	Steel Bar	..... 3/8" (9.5mm) - 7 Gauge (4.5mm)	..... ASTM A36
	Steel Strip	..... 10 Gauge (3.4mm) - 16 Gauge (1.5mm)	..... ASTM A569
	Steel Tube	..... .065 (1.7mm)	..... ASTM A513
	Extruded Aluminum (AL)	.....	..... ASTM 6063-T6

**Finish:**

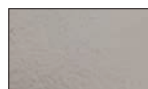
- Powder Coat Paint
- Telco Gray (TG)
- Computer White (CW)
- Flat Black (FB)
- Silver (SL)

Chemical Conversion Coatings Available

- Yellow Zinc (YZ) ..... ASTM B633
- Black Zinc (BZ) ..... ASTM B633



(AL)  
Brushed  
Aluminum



(TG)  
Telco Gray



(CW)  
Computer  
White  
(Alcatel Gray)



(FB)  
Flat Black  
&  
(BZ)  
Black Zinc



(YZ)  
Yellow Zinc



(SL)  
Silver

**Standard Conformances:**

UL Listed as a communications circuit accessory (File No. E171963).

## RCM+™ Cable Spools and Spool Kits

- Designed for use with RCM, RCM+, and V-Line Vertical Cable Managers.
- Spool provides 1.125" (28mm) bend radius.
- Unique, expandable design that provides for in-and-out depth adjustability from 5" (127mm) to 8" (203mm) with hands-only twist and lock capability
- Cable spools attach quickly to keyhole slots provided in mounting channels and optional back covers. (see page 98)
- Facilitates storage and routing of cable.
- No tools required for adjustment
- Pre-installed screws for quick mounting inside cable pathways
- SB860ACSFB includes (1) spool.  
SB860ACSxxxFB Spool kits includes (2) spools, mounting channels and hardware.
- Unique spool kit design provides for vertical and horizontal adjustability to suit any need.
- Material: Steel with UL 94V-0 black plastic
- Finish: Flat Black Powder Coat

### Spool Only

Part Number	Adjustable Depth		Bend Radius		Weight Each	
	In.	(mm)	In.	(mm)	Lbs.	(kg)
<b>SB860ACSFB</b>	5" - 8"	(127 - 203)	1.125"	(28)	0.53	(0.24)



### Spool Kits - (2) Spools & (1) Mounting Channel with Hardware)

Part Number	Fits Rack Height of		Adjustable Depth		Bend Radius		Weight	
	In.	(mm)	In.	(mm)	In.	(mm)	Lbs.	(kg)
<b>SB860ACSK066FB</b>	66"	(1676)	5" - 8"	(127 - 203)	1.125"	(28)	3.1	(1.40)
<b>SB860ACSK072FB</b>	72"	(1829)	5" - 8"	(127 - 203)	1.125"	(28)	3.3	(1.49)
<b>SB860ACSK078FB</b>	78"	(1981)	5" - 8"	(127 - 203)	1.125"	(28)	3.6	(1.63)
<b>SB860ACSK084FB</b>	84"	(2133)	5" - 8"	(127 - 203)	1.125"	(28)	3.8	(1.72)
<b>SB860ACSK090FB</b>	90"	(2286)	5" - 8"	(127 - 203)	1.125"	(28)	4.1	(1.86)
<b>SB860ACSK096FB</b>	96"	(2438)	5" - 8"	(127 - 203)	1.125"	(28)	4.4	(1.99)
<b>SB86ACSPK108FB</b>	108"	(2743)	5" - 8"	(127 - 203)	1.125"	(28)	4.8	(2.18)

U.S. and Foreign  
Patents Pending

