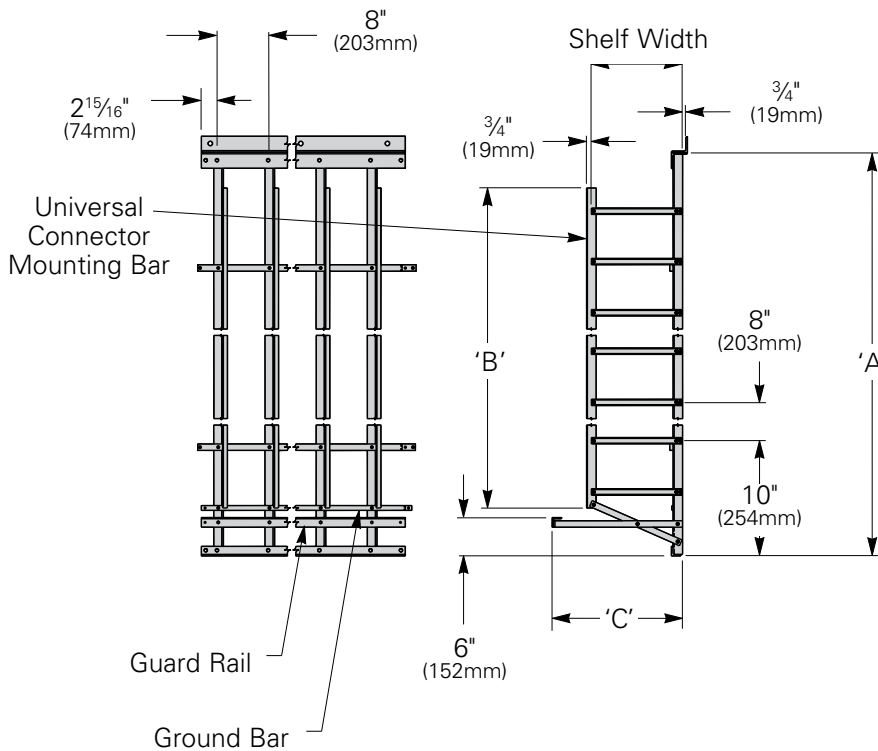


Distribution Frames

Universal Distribution Frame - Wall Mount

- Use to support terminal blocks for central office cross connects
- If the vertical terminal blocks are to be corner-mounted, SB658 terminal block mounting plate must be ordered separately
- End guards and grounding strap must be ordered separately
- Includes: frame, universal connector mounting bar, jumper rings, ground bar, guard rail, support and hardware
- Material: ASTM A36 structural steel
- Finish ____: Telco gray powder coat (TG)
Other finishes are available upon request



Part Number Legend

SB-6xx	Frame Height No. of Shelves	Number of Verticals (*)
Frame Type -	084 (9 shelves)	01 - 1 Vertical
Shelf Width	096 (11 shelves)	02 - 2 Verticals
615 - Wall Mount	108 (12 shelves)	03 - 3 Verticals
617 - Wall Mount	120 (14 shelves)	04 - 4 Verticals
	138 (16 shelves)	05 - 5 Verticals
	140 (16 shelves)	06 - 6 Verticals
		07 - 7 Verticals
		08 - 8 Verticals
		09 - 9 Verticals
		10 - 10 Verticals

Example: SB61508406

SB615 - [9 1/4" (235mm) Wide - Wall Mount]
 084 - [84" (2133mm) tall with 9 shelves]
 06 - [6 Verticals]

11 (No Verticals, End Guards Only)
 [End guards for both sides included]
 12 (No Verticals, Junction Kit Only)

Universal Distribution Frame - Wall Mount *continued*

- Finish ___: Telco gray powder coat (TG)
Other finishes are available upon request

Wall Mounted Frames

Part Number	Frame Height 'A' In. (mm)	'B' Dimension In. (mm)	'C' Dimension In. (mm)	No. of Shelves
9¼" (235mm) Shelf Width				
SB615084(*) __	84" (2133)	71" (1803)	16⅜" (416)	9
SB615096(*) __	96" (2438)	86" (2184)	16⅜" (416)	11
SB615108(*) __	108" (2743)	94" (2387)	16⅜" (416)	12
SB615120(*) __	120" (3048)	110" (2794)	16⅜" (416)	14
SB615138(*) __	138" (3505)	123" (3124)	16⅜" (416)	16
SB615140(*) __	140" (3556)	123" (3124)	16⅜" (416)	16
14¼" (362mm) Shelf Width				
SB617084(*) __	84" (2133)	71" (1803)	21⅜" (542)	9
SB617096(*) __	96" (2438)	86" (2184)	21⅜" (542)	11
SB617108(*) __	108" (2743)	94" (2387)	21⅜" (542)	12
SB617120(*) __	120" (3048)	110" (2794)	21⅜" (542)	14
SB617138(*) __	138" (3505)	123" (3124)	21⅜" (542)	16
SB617140(*) __	140" (3556)	123" (3124)	21⅜" (542)	16

Specify part number and finish when ordering.

* See part number legend on page 348.

Universal Connector Mounting Bar Capacity

Frame Size (No. of Shelves)	'B'		No. Terminal Blocks	C-303	R-700	C-310 R-710	C-377 R-355 C-388
	In.	(mm)					
9	71"	(1803)	8	300	300	500	600
11	86"	(2184)	10	400	400	600	800
12	94"	(2387)	11	500	400	600	800
14	110"	(2794)	13	500	500	700	1000
16	123"	(3124)	15	600	600	800	1100