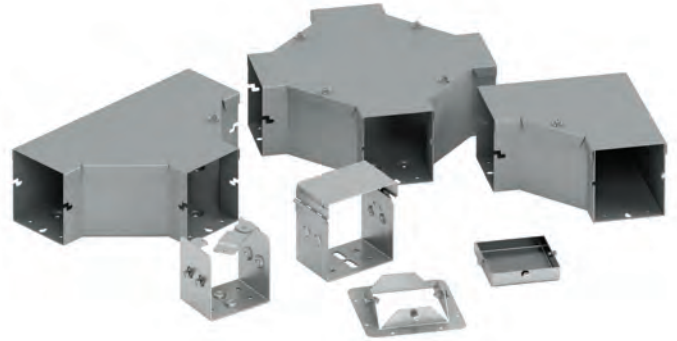


## Lay-In Wireway Type 3R EnviroShield™ System Data Sheet



Install inside connector in wireway ends and tighten



Install and secure hinged covers



Install outside connector around wireway splice location



Latch shut (padlock can be installed if desired)

### Application

- Houses runs of power, control and communication cable
- Used for cable and wire junction, distribution and termination

### Standards

- UL 870 listed, Type 3R
- CSA C22.2 No. 26 certified, Type 3R
- Conforms to NEMA standard for Type 3R

### Material & Finish

- Galvanealed steel with ANSI 61 gray acrylic electrocoat finish and zinc plated hardware
- Aluminum with stainless steel hardware

### Accessories

- Sealing devices
- Touch-up paint
- See Accessories section

Protected by U.S. Patents 7,525,044 & 7,762,042

### Construction

- Wireway body and cover are fabricated from code gauge steel, or brushed aluminum (see page 22)
- Wireway body has embossed mounting holes on the back
- Cover is secured to the body with gasketed retaining screw
- Variety of fittings allow runs which can change directions, size, junction and terminate, as well as, expansion and contraction
- Wireway connectors (sold separately) have a gate feature which can swing completely open allowing for lay-in of wire and cable
- Wireway connectors have a locking feature for optional pad-locking
- Removable hinge cover construction
- Z-slots for quick-connect connection method
- Wireways 120" (3048mm) in length have two overlapping covers

### Discount Schedule: A2

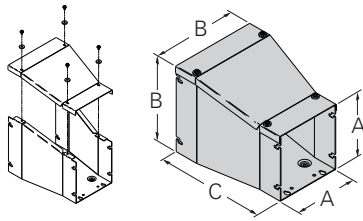
### Subclass: RHS

**Notes:** We can provide special sizes, finishes and other modifications. Consult the factory for your special requirements.

## Lay-In Wireway Type 3R EnviroShield™ System Illustration Sheet and Catalog Number

### Wireway Reducer

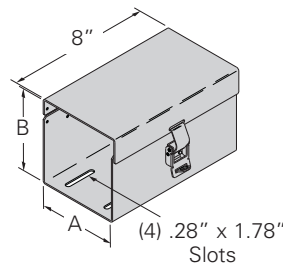
Screw opening cover design for applications where a change in wireway cross-section (height x width) is necessary.



Wireway Reducer Catalog Number		A		B		C	
Steel	Aluminum	in.	mm	in.	mm	in.	mm
4466-3RSCR	4466-3RASCR	4.00	101	6.00	152	10.00	254
4488-3RSCR	4488-3RASCR	4.00	101	8.00	203	10.00	254
6688-3RSCR	6688-3RASCR	6.00	152	8.00	203	10.00	254

### Wireway Expansion Fitting

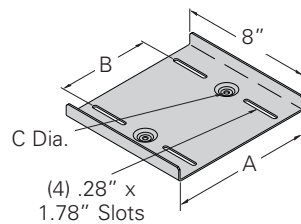
Side opening hinge cover design for applications where expansion and contraction are a concern. Wrap-around sleeve provides Type 3R rating and optional pad-locking tab.



Wireway Expansion Fitting Catalog Number		A		B	
Steel	Aluminum	in.	mm	in.	mm
44-3RHSXJ	44-3RAHSXJ	4.00	101	4.00	101
66-3RHSXJ	66-3RAHSXJ	6.00	152	6.00	152
88-3RHSXJ	88-3RAHSXJ	8.00	203	8.00	203

### Expansion Support Fitting

Designed for applications where expansion and contraction are a concern. One expansion support is required at each support location. Slots allow single axis expansion and contraction movement.



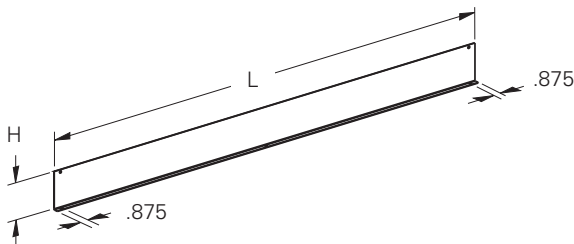
Expansion Support Catalog Number		A Inside Dim.		B		C	
Steel	Aluminum	in.	mm	in.	mm	in.	mm
44-3RHSXS	44-3RHASXS	4.562	116	2.50	63.5	.25	6.3
66-3RHSXS	66-3RHASXS	6.562	166	3.75	95.2	.25	6.3
88-3RHSXS	88-3RHASXS	8.620	219	5.75	146.0	.25	6.3

### Bolt-On Barrier

For installations that require separated wiring compartments. An ideal solution for separating power from communication cables.

\* Not UL or CSA listed fitting

Wireway Catalog Number		Wireway Size Height x Depth		Length		Height	
Steel	Aluminum	A x B		L		H	
		in.	mm	in.	mm	in.	mm
44-12BK*	44-3RBKA*	4.00 x 4.00	101 x 101	60.00	1524	3.00	76.2
66-12BK*	66-3RBKA*	6.00 x 6.00	152 x 152	60.00	1524	4.50	114.3
88-12BK*	88-3RBKA*	8.00 x 8.00	203 x 203	60.00	1524	6.00	152.4



**Notes:** Dimensions are in inches. Millimeters shown are for reference only. Data subject to change without notice.