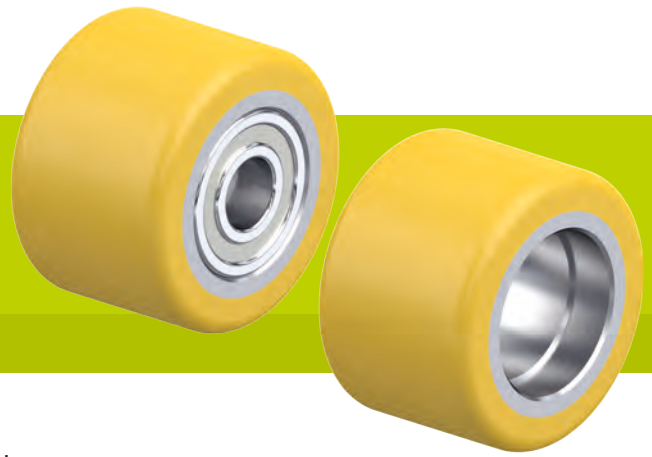


HTH series, dimensions 85x75–90x50 mm

Rollers for pallet trucks with Blickle Extrathane® polyurethane tread, with metal wheel centre



420–1,130 kg

Tread and tyre hardness
 92 Shore A

Smooth operation / floor preservation
 good

Rolling resistance
 very good

Wear resistance
 excellent

- Tread:**
- high-quality polyurethane elastomer Blickle Extrathane®, hardness 92 Shore A
 - low rolling resistance
 - high abrasion resistance
 - high cut and tear propagation resistance
 - colour light brown, non-marking, non-staining
 - excellent chemical connection with the wheel centre

- Wheel centre:**
- metal

- Other features:**
- high chemical resistance to many aggressive substances
 - operating temperature: -20 °C to +70 °C, temporarily up to +90 °C, reduced load capacity over +40 °C

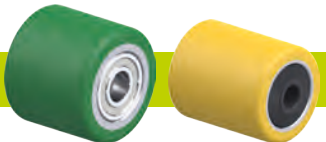
- Additional details:**
- wheel series: page 78
 - tread: page 55
 - bearing types: page 84–85
 - chemical resistance: page 51



Rollers for pallet trucks with ball bearing	Wheel Ø (D) [mm]	Wheel width (T2) [mm]	Axle bore Ø (d) [mm]	Clamping length (T5) [mm]	Ball bearing	Rollers for pallet trucks without ball bearing	Bearing seating Ø (S) [mm]	Bearing seating depth (t) [mm]	Load capacity [kg]
HTH 85x75/20-77K	85	75	20	77	6204 ZZV	RK-HTH 085x075/47x14-75-Z	47	14	720
HTH 85x75/20-79K	85	75	20	79	6204 ZZV	RK-HTH 085x075/47x15-75-Z	47	15	720
HTH 85x78/20-78K	85	78	20	78	6204 ZZ	RK-HTH 085x078/47x14-78-Z	47	14	740
HTH 85x80/17-82K	85	80	17	82	6303 ZZ	RK-HTH 085x080/47x14-80-Z	47	14	770
HTH 85x80/20-80K	85	80	20	80	6204 ZZ	RK-HTH 085x080/47x14-80-Z	47	14	770
HTH 85x80/20-85K	85	80	20	85	6204 ZZV	RK-HTH 085x080/47x14-80-Z	47	14	770
HTH 85x80/25-74K	85	80	25	74	6205 ZZ	RK-HTH 085x080/52x18-80-Z	52	18	770
HTH 85x80/25-80K	85	80	25	80	6005 ZZ	RK-HTH 085x080/47x14-80-Z	47	14	770
HTH 85x80/25-85K	85	80	25	85	6005 ZZV	RK-HTH 085x080/47x14-80-Z	47	14	770
HTH 85x85/20-85K	85	85	20	85	6204 ZZ	RK-HTH 085x085/47x14-85-Z	47	14	820
HTH 85x85/25-85K	85	85	25	85	6005 ZZ	RK-HTH 085x085/47x14-85-Z	47	14	820
HTH 85x87/17-89K	85	87	17	89	6303 ZZ	RK-HTH 085x087/47x14-87-Z	47	14	830
HTH 85x90/17-90K	85	90	17	90	6303 ZZ	RK-HTH 085x090/47x14-90-Z	47	14	850
HTH 85x90/20-90K	85	90	20	90	6204 ZZ	RK-HTH 085x090/47x14-90-Z	47	14	850
HTH 85x95/20-95K	85	95	20	95	6204 ZZ	RK-HTH 085x095/47x14-95-Z	47	14	910
HTH 85x95/20-100K	85	95	20	100	6204 ZZV	RK-HTH 085x095/47x14-95-Z	47	14	910
HTH 85x100/17-100K	85	100	17	100	6303 ZZ	RK-HTH 085x100/47x14-100-Z	47	14	960
HTH 85x100/20-100K	85	100	20	100	6204 ZZ	RK-HTH 085x100/47x14-100-Z	47	14	960
HTH 85x100/20-102K	85	100	20	102	6204 ZZV	RK-HTH 085x100/47x14-100-Z	47	14	960
HTH 85x100/20-104K	85	100	20	104	6204 ZZV	RK-HTH 085x100/47x15-100-Z	47	15	960
HTH 85x100/25-100K	85	100	25	100	6005 ZZ	RK-HTH 085x100/47x14-100-Z	47	14	960
HTH 85x100/25-104K	85	100	25	104	6005 ZZV	RK-HTH 085x100/47x14-100-Z	47	14	960
HTH 85x105/25-110K	85	105	25	110	6005 ZZV	RK-HTH 085x105/47x13-105-Z	47	12.5	1,010
HTH 85x110/25-110K	85	110	25	110	6005 ZZ	RK-HTH 085x110/47x14-110-Z	47	14	1,060
HTH 85x110/25-114K	85	110	25	114	6005 ZZV	RK-HTH 085x110/47x14-110-Z	47	14	1,060
HTH 85x120/25-124K	85	120	25	124	6005 ZZV	RK-HTH 085x120/47x14-120-Z	47	14	1,130
HTH 90x42/20-40K	90	42	20	40	6204 ZZ	RK-HTH 090x042/47x15-42-Z	47	15	420
HTH 90x50/20-48K	90	50	20	48	6204 ZZ	RK-HTH 090x050/47x15-50-Z	47	15	500

Other dimensions available upon request

Versions / options



	with Blickle Softhane® polyurethane tread	splash and washproof version
Technical description page	55	79
Product code suffix	HST series	HTHW series
Available for	upon request*	see page 564–565

* Hardness 75 Shore A

