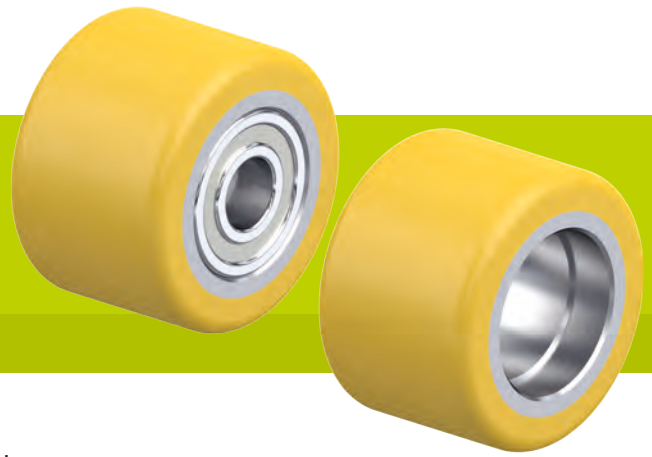


HTH series, dimensions 60x35–82x65 mm

Rollers for pallet trucks with Blickle Extrathane® polyurethane tread, with metal wheel centre



220–850 kg

Tread and tyre hardness
 92 Shore A

Smooth operation / floor preservation
 good

Rolling resistance
 very good

Wear resistance
 excellent

- Tread:**
- high-quality polyurethane elastomer Blickle Extrathane®, hardness 92 Shore A
 - low rolling resistance
 - high abrasion resistance
 - high cut and tear propagation resistance
 - colour light brown, non-marking, non-staining
 - excellent chemical connection with the wheel centre

- Wheel centre:**
- metal

- Other features:**
- high chemical resistance to many aggressive substances
 - operating temperature: -20 °C to +70 °C, temporarily up to +90 °C, reduced load capacity over +40 °C

- Additional details:**
- wheel series: page 78
 - tread: page 55
 - bearing types: page 84–85
 - chemical resistance: page 51



| Rollers for pallet trucks with ball bearing | Wheel Ø (D) [mm] | Wheel width (T2) [mm] | Axle bore Ø (d) [mm] | Clamping length (T5) [mm] | Ball bearing | Rollers for pallet trucks without ball bearing | Bearing seating Ø (S) [mm] | Bearing seating depth (t) [mm] | Load capacity [kg] |
|---------------------------------------------|------------------|-----------------------|----------------------|---------------------------|--------------|------------------------------------------------|----------------------------|--------------------------------|--------------------|
| HTH 60x35/15-35K | 60 | 35 | 15 | 35 | 6002 ZZ | RK-HTH 060x035/32x09-35-Z | 32 | 9 | 220 |
| HTH 60x60/10-56K | 60 | 60 | 10 | 56 | 6200 2RS | RK-HTH 060x060/30x11-60-Z | 30 | 11 | 400 |
| HTH 75x40/20-40K | 75 | 40 | 20 | 40 | 6204 ZZ | RK-HTH 075x040/47x14-40-Z | 47 | 14 | 340 |
| HTH 75x62/20-62K | 75 | 62 | 20 | 62 | 6204 ZZ | RK-HTH 075x062/47x14-62-Z | 47 | 14 | 510 |
| HTH 75x75/20-75K | 75 | 75 | 20 | 75 | 6204 ZZ | RK-HTH 075x075/47x14-75-Z | 47 | 14 | 630 |
| HTH 75x95/20-95K | 75 | 95 | 20 | 95 | 6204 ZZ | RK-HTH 075x095/47x14-95-Z | 47 | 14 | 800 |
| HTH 80x30/12-27K | 80 | 30 | 12 | 27 | 6201 ZZ | RK-HTH 080x030/32x12-30-Z | 32 | 12 | 260 |
| HTH 80x40/20-40K | 80 | 40 | 20 | 40 | 6204 ZZ | RK-HTH 080x040/47x14-40-Z | 47 | 14 | 350 |
| HTH 80x54/20-54K | 80 | 54 | 20 | 54 | 6204 ZZ | RK-HTH 080x054/47x14-54-Z | 47 | 14 | 480 |
| HTH 80x54/20-60K | 80 | 54 | 20 | 60 | 6204 ZZV | RK-HTH 080x054/47x14-54-Z | 47 | 14 | 480 |
| HTH 80x56/20-56K | 80 | 56 | 20 | 56 | 6204 ZZ | RK-HTH 080x056/47x14-56-Z | 47 | 14 | 500 |
| HTH 80x60/20-66K | 80 | 60 | 20 | 66 | 6204 ZZV | RK-HTH 080x060/47x12-60-Z | 47 | 12 | 530 |
| HTH 80x62/20-54K | 80 | 62 | 20 | 54 | 6204 ZZ | RK-HTH 080x062/47x18-62-Z | 47 | 18 | 550 |
| HTH 80x70/20-70K | 80 | 70 | 20 | 70 | 6204 ZZ | RK-HTH 080x070/47x14-70-Z | 47 | 14 | 630 |
| HTH 80x74/20-68K | 80 | 74 | 20 | 68 | 6004 ZZ | RK-HTH 080x074/42x14-72-Z * | 42 | 14 | 660 |
| HTH 80x80/20-80K | 80 | 80 | 20 | 80 | 6204 ZZ | RK-HTH 080x080/47x14-80-Z | 47 | 14 | 720 |
| HTH 80x95/20-89K | 80 | 95 | 20 | 89 | 6004 ZZ | RK-HTH 080x095/42x14-93-Z * | 42 | 14 | 850 |
| HTH 82x28/12-26K | 82 | 28 | 12 | 26 | 6201 ZZ | RK-HTH 082x028/32x11-28-Z | 32 | 11 | 250 |
| HTH 82x34/12-32K | 82 | 34 | 12 | 32 | 6201 ZZ | RK-HTH 082x034/32x11-34-Z | 32 | 11 | 310 |
| HTH 82x50/20-52K | 82 | 50 | 20 | 52 | 6204 ZZ | RK-HTH 082x050/47x13-50-Z | 47 | 13 | 450 |
| HTH 82x60/20-56K | 82 | 60 | 20 | 56 | 6204 ZZ | RK-HTH 082x060/47x16-60-Z | 47 | 16 | 550 |
| HTH 82x60/20-60K | 82 | 60 | 20 | 60 | 6204 ZZ | RK-HTH 082x060/47x14-60-Z | 47 | 14 | 550 |
| HTH 82x60/25-52K | 82 | 60 | 25 | 52 | 6205 ZZ | RK-HTH 082x060/52x19-60-Z | 52 | 19 | 550 |
| HTH 82x60/25-60K | 82 | 60 | 25 | 60 | 6005 ZZ | RK-HTH 082x060/47x14-60-Z | 47 | 14 | 550 |
| HTH 82x62/20-64K | 82 | 62 | 20 | 64 | 6204 ZZ | RK-HTH 082x062/47x13-62-Z | 47 | 13 | 560 |
| HTH 82x65/20-65K | 82 | 65 | 20 | 65 | 6204 ZZ | RK-HTH 082x065/47x14-65-Z | 47 | 14 | 590 |
| HTH 82x65/20-71K | 82 | 65 | 20 | 71 | 6204 ZZV | RK-HTH 082x065/47x14-65-Z | 47 | 14 | 590 |

* Hub recessed

For other dimensions, please refer to the next page

Versions / options



with Blickle Softhane® polyurethane tread splash and washproof version

| | | |
|----------------------------|----------------|------------------|
| Technical description page | 55 | 79 |
| Product code suffix | HST series | HTHW series |
| Available for | upon request** | see page 564–565 |

** Hardness 75 Shore A

