

**BALDOR • RELIANCE**

---

# Customer information packet

## VL3513-50

1.5/1.1KWHP, 2910RPM, 1PH, 50HZ, 56C, 3530LC

Class - None

Division - Not Applicable

## Specifications

Enclosure	TEFC
Frame	56C
Frame Material	Steel
Frequency	50.00 Hz
Haz Area Class and Group	None
Haz Area Division	Not Applicable
Motor Letter Type	Cap Start, Cap Run
Output @ Frequency	1.500 HP @ 50 HZ
Phase	1
Synchronous Speed @ Frequency	3000 RPM @ 50 HZ
Voltage @ Frequency	110.0 V @ 50 HZ 220.0 V @ 50 HZ
Agency Approvals	C UR US CE CURUS UKCA WEEE
Ambient Temperature	40 °C
Auxillary Box	No Auxillary Box
Auxillary Box Lead Termination	None
Base Indicator	No Mounting
Bearing Grease Type	Polyrex EM (-20F +300F)
Blower	None
Current @ Voltage	6.500 A @ 220.0 V 13.000 A @ 110.0 V
Design Code	L
Drip Cover	No Drip Cover
Duty Rating	CONT
Efficiency @ 100% Load	79.6 %
Electrically Isolated Bearing	Not Electrically Isolated
Feedback Device	NO FEEDBACK
Front Shaft Indicator	None

## Part detail

Revision	B
Type	AC
Mech. spec.	35E022
Base	
Status	PRD/A
Elec. spec.	35WGK257
Layout	35LYE022
Eff. date	05-07-2024
CD Diagram	CD0055
Poles	02
Leads	6#18
Proprietary	False
Created date	02-13-2024

Heater Indicator	No Heater
High Voltage Full Load Amps	6.5 a
Insulation Class	F
Inverter Code	Not Inverter
KVA Code	J
Lifting Lugs	No Lifting Lugs
Locked Bearing Indicator	Locked Bearing
Motor Lead Quantity/Wire Size	6 @ 18 AWG
Motor Lead Termination	Flying Leads
Motor Standards	NEMA
Motor Type	3530LC
Mounting Arrangement	F1
Number of Poles	2
Overall Length	14.10 IN
Power Factor	96
Product Family	General Purpose
Pulley End Bearing Type	Ball
Pulley Face Code	C-Face
Pulley Shaft Indicator	Standard
Rodent Screen	None
Service Factor	1.15
Shaft Diameter	0.625 IN
Shaft Ground Indicator	No Shaft Grounding
Shaft Rotation	Reversible
Shaft Slinger Indicator	No Slinger
Speed	2910 rpm
Speed Code	Single Speed
Starting Method	Direct on line
Thermal Device - Bearing	None
Thermal Device - Winding	None
Vibration Sensor Indicator	No Vibration Sensor
Winding Thermal 1	None
Winding Thermal 2	None

**Nameplate**

<b>NP1372L</b>									
<b>CAT.NO.</b>	VL3513-50								
<b>SPEC.</b>	35E022K257								
<b>HP</b>	1.5/1.1KW								
<b>VOLTS</b>	110/220								
<b>AMP</b>	13/6.5								
<b>R.P.M. (1/MIN)</b>	2910								
<b>FRAME</b>	56C		<b>HZ</b>	50		<b>PH</b>	1		
<b>SER.F.</b>	1.15	<b>CODE</b>	J	<b>DES</b>	L	<b>CL</b>	F		
<b>NEMA-NOM-EFF</b>	79.6	<b>PF</b>	96						
<b>RATING</b>	40C AMB-S1 CONT								
<b>CC</b>		IP44 IC411 30KG							
<b>DE</b>	6205	<b>ODE</b>	6203						
<b>ENCL</b>	TEFC	<b>SN</b>							
	IE2-50HZ 81.3(75%) 77.0(50%)								

**AC Induction Motor Performance Data**

Record # 103731

Typical performance - not guaranteed values

Winding: 35WGK257-R001		Type: 3530LC		Enclosure: TEFC	
<b>Nameplate Data</b>			<b>110 V, 50 Hz: Low Voltage Connection</b>		
Rated Output (HP)	1.5	Full Load Torque	2.71 LB-FT		
Volts	110/220	Start Configuration	direct on line		
Full Load Amps	13/6.5	Breakdown Torque	8 LB-FT		
R.P.M.	2910	Pull-up Torque	6.2 LB-FT		
Hz	50 Phase	1	Locked-rotor Torque	9 LB-FT	
NEMA Design Code	L	KVA Code	J	Starting Current	107 A
Service Factor (S.F.)	1.15	No-load Current	3.1 A		
NEMA Nom. Eff.	79.6	Power Factor	96	Line-line Res. @ 25°C	0.319 Ω A Ph 1.59 Ω B Ph
Rating - Duty	40C	AMB-CONT	Temp. Rise @ Rated Load		
S.F. Amps				43°C	
			Temp. Rise @ S.F. Load		
			51°C		
			Locked-rotor Power Factor		
			84.3		
			Rotor inertia		
			0.0645 lb-ft <sup>2</sup>		

**Load Characteristics 110 V, 50 Hz, 1.5 HP**

% of Rated Load	25	50	75	100	125	150	S.F.
Power Factor	87	93	95	96	97	96	97
Efficiency	64.9	77	81.3	82	81.3	79.3	81.6
Speed	2976	2956	2933	2908	2880	2845	2891
Line amperes	4.67	7.09	9.89	12.89	16.21	19.97	14.9

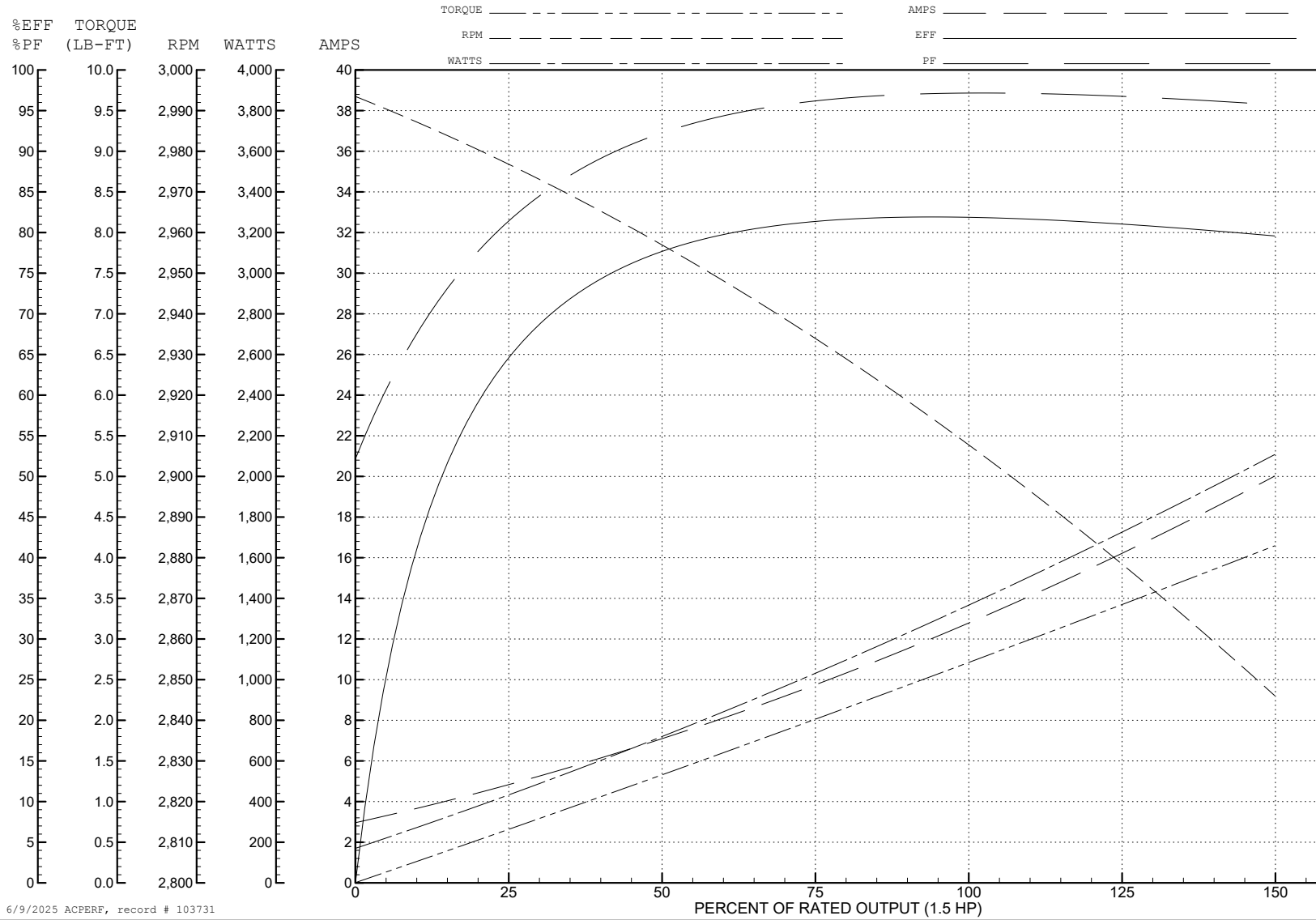
ABB Motors and Mechanical Inc.

WINDING # 35WGK257

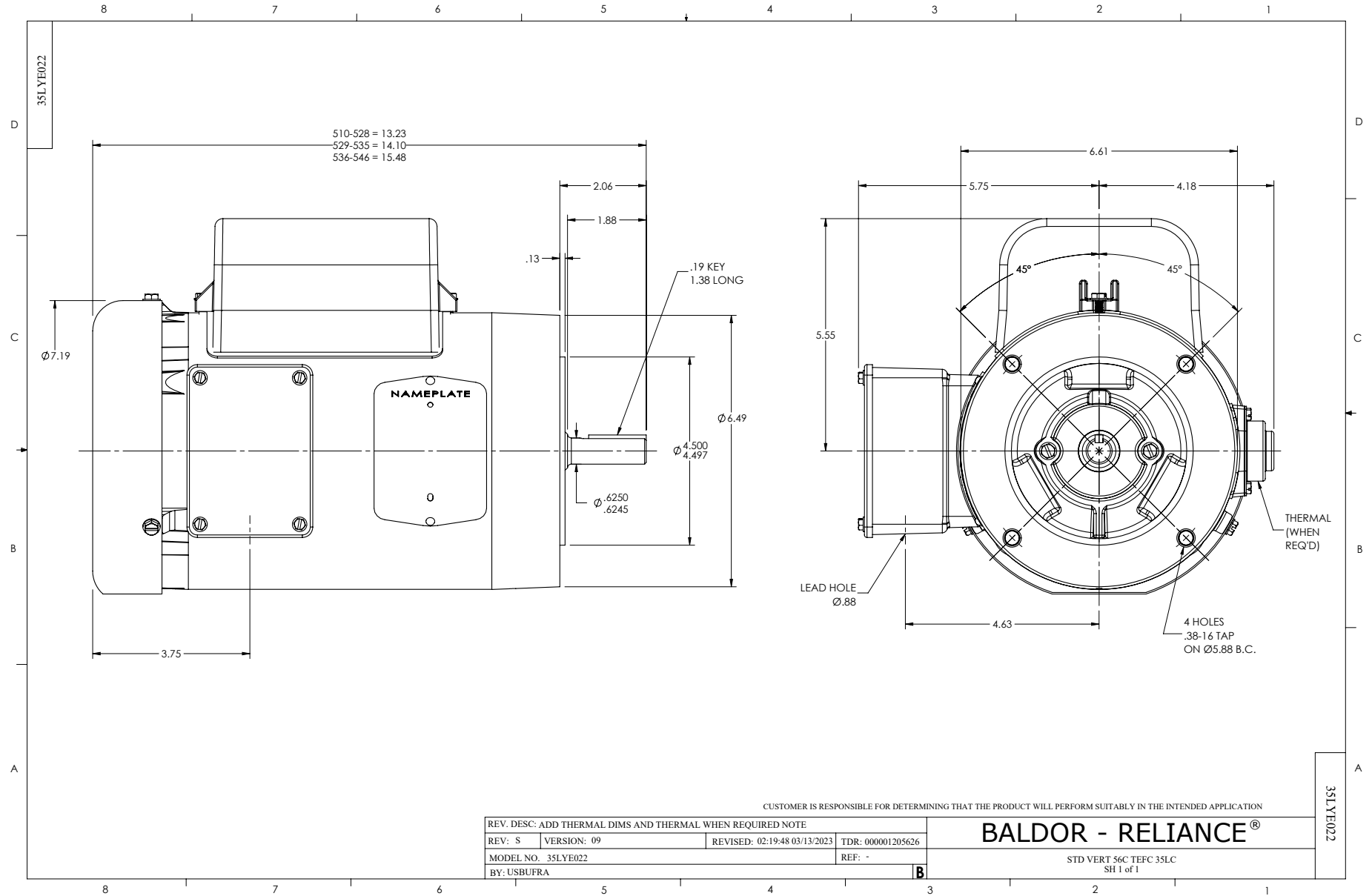
1.5 HP 1 PH 50 HZ 2910 RPM 110 V 3530LC

Typical performance - not guaranteed values.

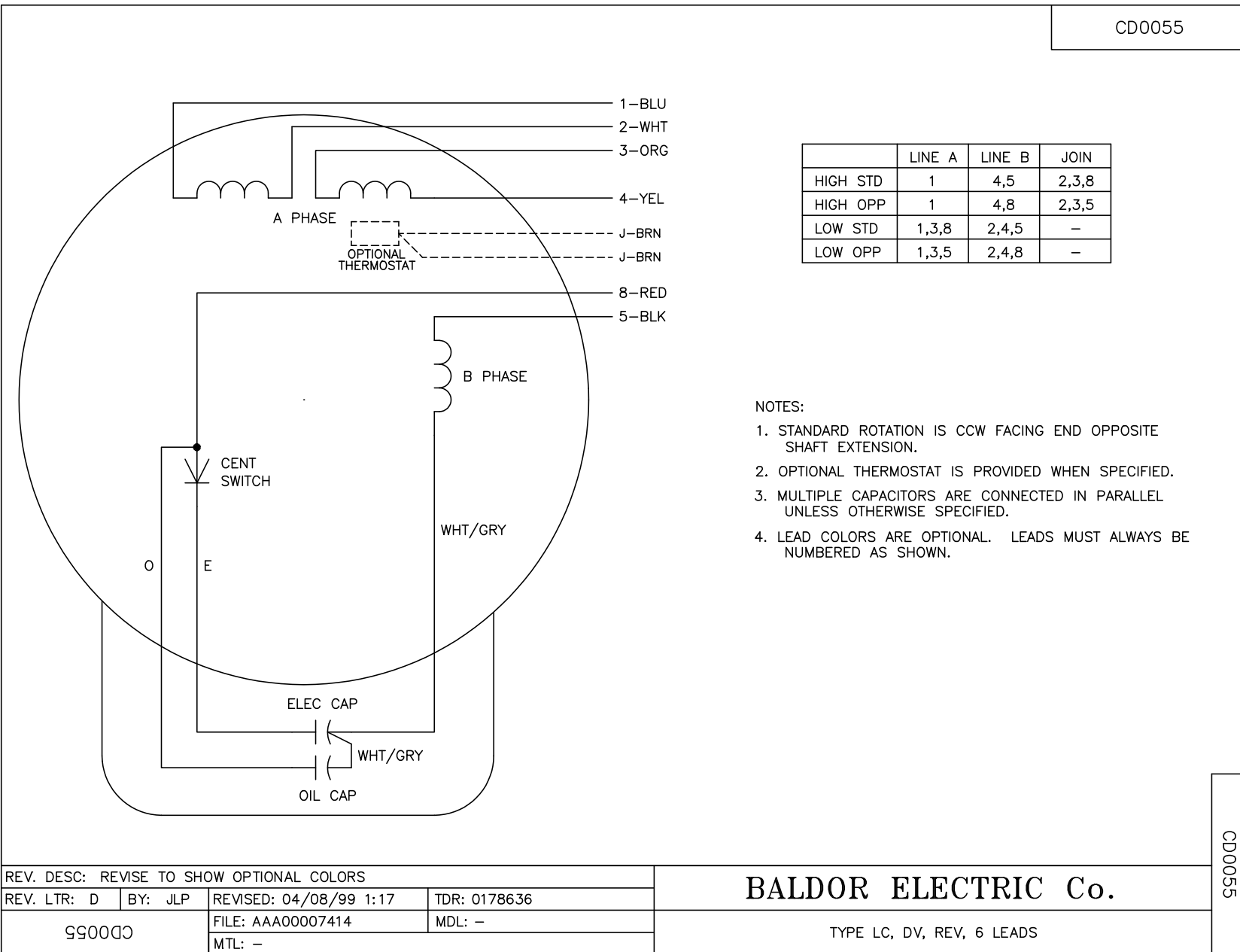
TORQUES (LB-FT): PO=8 PU=6.2 LR=9 LRA=107



6/9/2025 ACPERF, record # 103731



CD0055



	LINE A	LINE B	JOIN
HIGH STD	1	4,5	2,3,8
HIGH OPP	1	4,8	2,3,5
LOW STD	1,3,8	2,4,5	-
LOW OPP	1,3,5	2,4,8	-

**NOTES:**

1. STANDARD ROTATION IS CCW FACING END OPPOSITE SHAFT EXTENSION.
2. OPTIONAL THERMOSTAT IS PROVIDED WHEN SPECIFIED.
3. MULTIPLE CAPACITORS ARE CONNECTED IN PARALLEL UNLESS OTHERWISE SPECIFIED.
4. LEAD COLORS ARE OPTIONAL. LEADS MUST ALWAYS BE NUMBERED AS SHOWN.

CD0055

REV. DESC: REVISE TO SHOW OPTIONAL COLORS			
REV. LTR: D	BY: JLP	REVISED: 04/08/99 1:17	TDR: 0178636
C00000		FILE: AAA00007414	MDL: -
		MTL: -	

**BALDOR ELECTRIC Co.**

TYPE LC, DV, REV, 6 LEADS