

BALDOR® • RELIANCE®

Customer information packet

VEM3555-57

2HP, 2900RPM, 3PH, 50HZ, 56C, 3532M, TEFC, F1, N

Class - None

Division - Not Applicable

Specifications

Enclosure	TEFC
Frame	56C
Frame Material	Steel
Frequency	50.00 Hz
Haz Area Class and Group	None
Haz Area Division	Not Applicable
Motor Letter Type	Three Phase
Output @ Frequency	2.000 HP @ 50 HZ
Phase	3
Synchronous Speed @ Frequency	3000 RPM @ 50 HZ
Voltage @ Frequency	230.0 V @ 50 HZ 400.0 V @ 50 HZ
Agency Approvals	C UR US CE CURUS IE3 UKCA WEEE
Ambient Temperature	40 °C
Auxillary Box	No Auxillary Box
Auxillary Box Lead Termination	None
Base Indicator	No Mounting
Bearing Grease Type	Polyrex EM (-20F +300F)
Blower	None
Current @ Voltage	2.900 A @ 400.0 V 5.000 A @ 230.0 V
Design Code	B
Drip Cover	No Drip Cover
Duty Rating	CONT
Efficiency @ 100% Load	84.2 %
Electrically Isolated Bearing	Not Electrically Isolated
Feedback Device	NO FEEDBACK

Part detail

Revision	R
Type	AC
Mech. spec.	35A013
Base	
Status	PRD/A
Elec. spec.	35WGQ064
Layout	35LYA013
Eff. date	05-07-2024
CD Diagram	CD0022
Poles	02
Leads	6#18
Proprietary	False
Created date	12-23-2015

Front Face Code	Standard
Front Shaft Indicator	None
Heater Indicator	No Heater
High Voltage Full Load Amps	2.9 a
Insulation Class	B
Inverter Code	Not Inverter
KVA Code	M
Lifting Lugs	No Lifting Lugs
Locked Bearing Indicator	Locked Bearing
Motor Lead Exit	Ko Box
Motor Lead Quantity/Wire Size	6 @ 18 AWG
Motor Lead Termination	Flying Leads
Motor Standards	NEMA
Motor Type	3532M
Mounting Arrangement	F1
Number of Poles	2
Overall Length	14.10 IN
Power Factor	88
Product Family	General Purpose
Pulley End Bearing Type	Ball
Pulley Face Code	C-Face
Pulley Shaft Indicator	Standard
Rodent Screen	None
RoHS Status	ROHS COMPLIANT
Service Factor	1.15
Shaft Diameter	0.625 IN
Shaft Extension Location	Pulley End
Shaft Ground Indicator	No Shaft Grounding
Shaft Rotation	Reversible
Shaft Slinger Indicator	No Slinger
Speed	2900 rpm
Speed Code	Single Speed
Starting Method	Direct on line
Thermal Device - Bearing	None

Thermal Device - Winding	None
Vibration Sensor Indicator	No Vibration Sensor
Winding Thermal 1	None
Winding Thermal 2	None

Nameplate

NP2716L									
CAT NO	VEM3555-57								
SPEC.	35A013Q064G1								
HP	2/1.5KW				PH	3			
VOLTS	230/400								
AMP	5/2.9								
R.P.M. (1/MIN)	2900								
FRAME	56C		HZ	50		I.P.	44		
SER.F.	1.15	CODE	M	DES	B	CL	B		
NOM.EFF.	84.2		% (100%)						
PF	88								
RATING	40C AMB-CONT				CC				
DE BRG	6205		ODE	6203					
ENCL	TEFC	SN							
BLANK	IE3-83.5(75%)79.8(50%)								
	23KG IC411								

AC Induction Motor Performance Data

Record # 54633

Typical performance - not guaranteed values

Winding: 35WGQ064-R004		Type: 3532M	Enclosure: TEFC	
Nameplate Data			400 V, 50 Hz: High Voltage Connection	
Rated Output (HP)	2	Full Load Torque	3.55 LB-FT	
Volts	230/400	Start Configuration	direct on line	
Full Load Amps	5/2.9	Breakdown Torque	17.8 LB-FT	
R.P.M.	2900	Pull-up Torque	11.5 LB-FT	
Hz	50 Phase	Locked-rotor Torque	16.4 LB-FT	
NEMA Design Code	N KVA Code	Starting Current	30.7 A	
Service Factor (S.F.)	1.15	No-load Current	1.4 A	
NEMA Nom. Eff.	84.2 Power Factor	Line-line Res. @ 25°C	4.8 Ω	
Rating - Duty	40C AMB-CONT	Temp. Rise @ Rated Load	44°C	
S.F. Amps		Temp. Rise @ S.F. Load	51°C	
		Locked-rotor Power Factor	58.4	
		Rotor inertia	0.0876 LB-FT ²	

Load Characteristics 400 V, 50 Hz, 2 HP

% of Rated Load	25	50	75	100	125	150	S.F.
Power Factor	50	71	83	88	90	92	89
Efficiency	70.4	80.6	83.9	84.9	84.8	84	84.8
Speed	2976	2954	2931	2908	2881	2855	2892
Line amperes	1.53	1.87	2.3	2.84	3.42	4.05	3.19

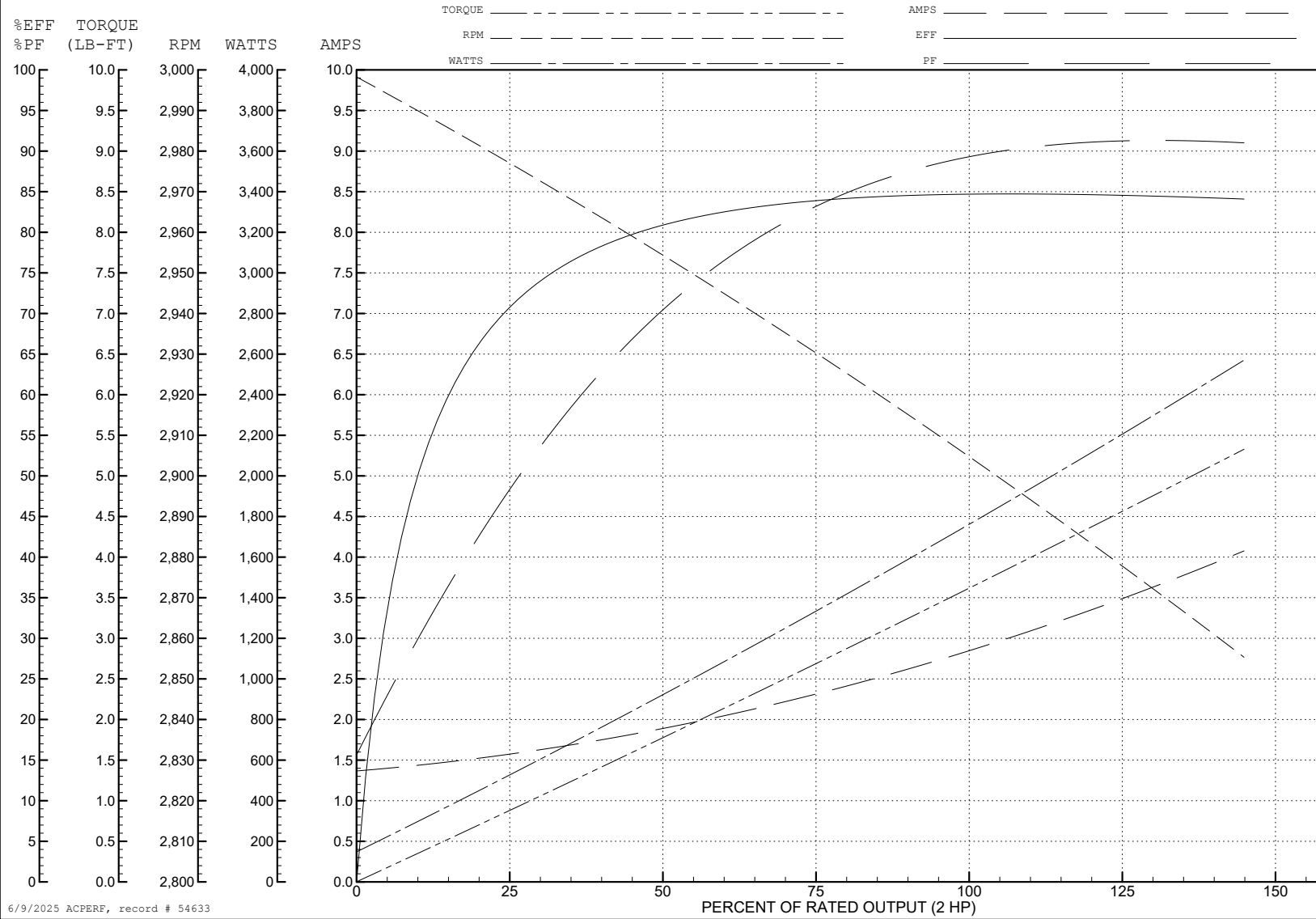
ABB Motors and Mechanical Inc.

WINDING # 35WGQ064

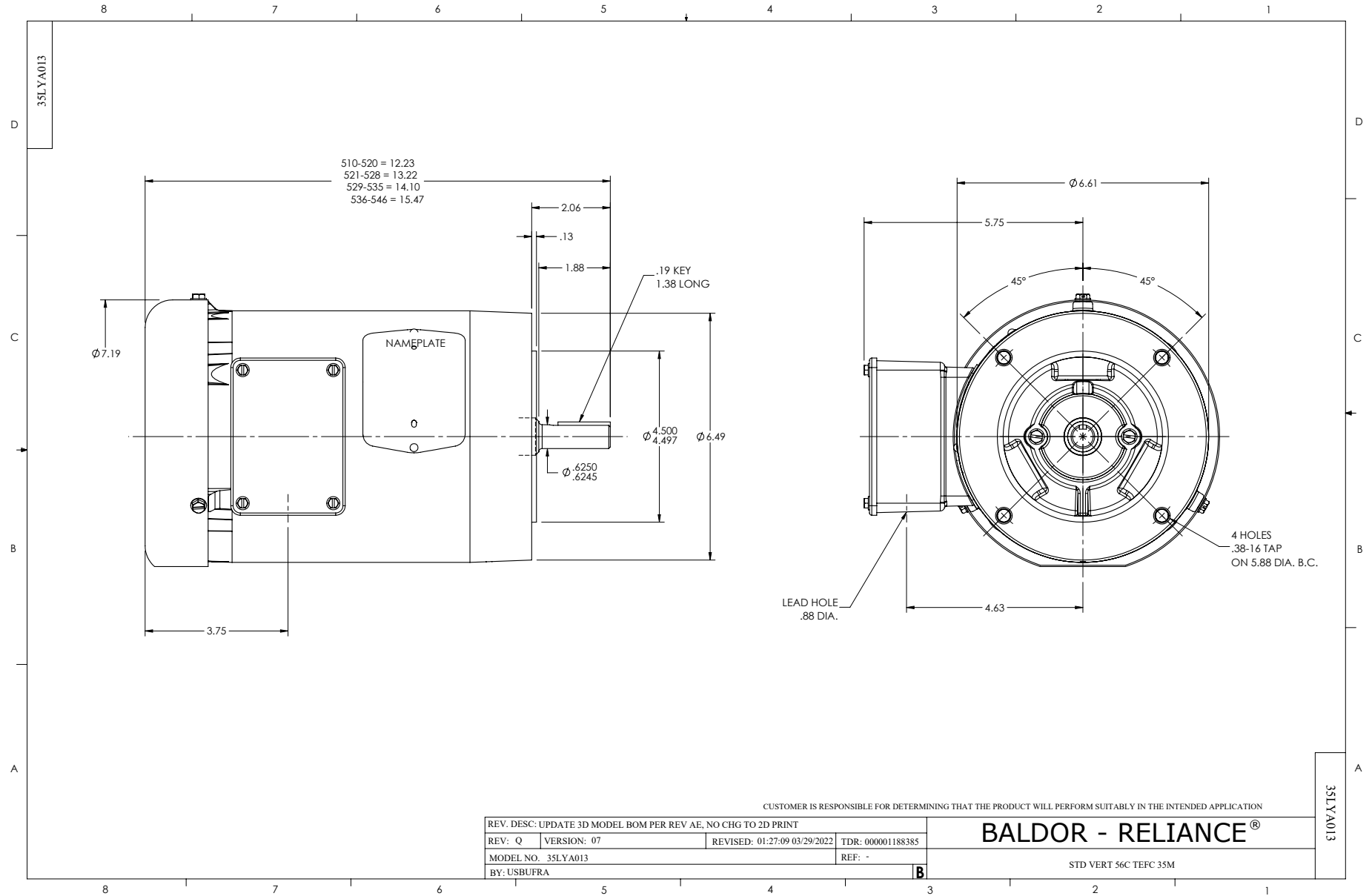
Typical performance - not guaranteed values.

2 HP 3 PH 50 HZ 2900 RPM 400 V 3532M

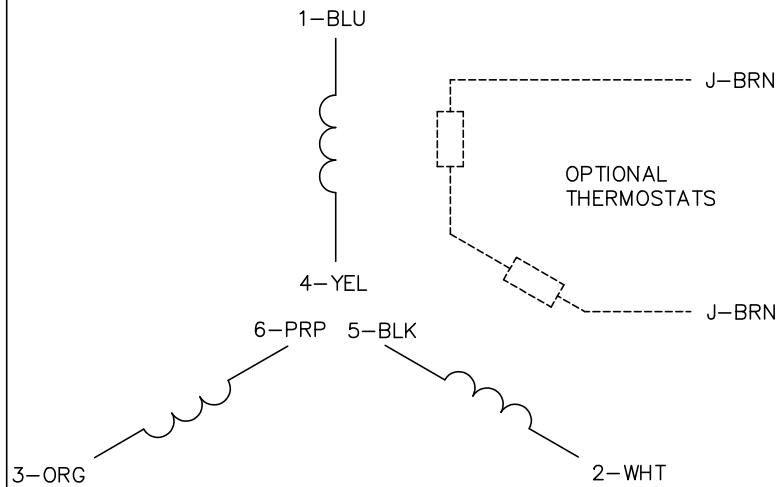
TORQUES (LB-FT): PO=17.8 PU=11.5 LR=16.4 LRA=30.7



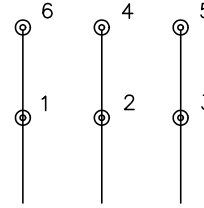
6/9/2025 ACPERF, record # 54633



CD0022

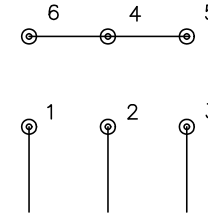


LOW VOLTAGE
(1D)



LINE

HIGH VOLTAGE
(1Y)



LINE

NOTES:

1. INTERCHANGE ANY TWO LINE LEADS TO REVERSE ROTATION.
2. OPTIONAL THERMOSTATS ARE PROVIDED WHEN SPECIFIED.
3. ACTUAL NUMBER OF INTERNAL PARALLEL CIRCUITS MAY BE A MULTIPLE OF THOSE SHOWN ABOVE.
4. LEAD COLORS ARE OPTIONAL. LEADS MUST ALWAYS BE NUMBERED AS SHOWN.

REV. DESC: REVISE TO SHOW OPTIONAL COLORS			
REV. LTR: F	BY: JLP	REVISED: 01/21/99 3:54	TDR: 0171435
CD0022		FILE: AAA00005144	MDL: -
		MTL: -	

BALDOR ELECTRIC Co.

3PH, DV, 6 LEADS, DELTA/WYE CONNECTION

CD0022