



---

# Customer information packet

## VEDM3558T

2HP, 1760RPM, 3PH, 60HZ, 145TC, 3528M, TEFC, F1

Class - None

Division - Not Applicable

## Specifications

|                                |   |
|--------------------------------|---|
| Enclosure                      | TEFC  |
| Frame                          | 145TC   |
| Frame Material                 | Steel   |
| Frequency                      | 60.00 Hz  |
| Haz Area Class and Group       | None  |
| Haz Area Division              | Not Applicable  |
| Motor Letter Type              | Three Phase   |
| Output @ Frequency             | 2.000 HP @ 60 HZ  |
| Phase                          | 3   |
| Synchronous Speed @ Frequency  | 1800 RPM @ 60 HZ  |
| Voltage @ Frequency            | 460.0 V @ 60 HZ<br>230.0 V @ 60 HZ                          |
| Agency Approvals               | CCSA US<br>CSA EEV<br>NEMA PREMIUM<br>NEMA_PREMIUM<br>UR    |
| Ambient Temperature            | 40 °C   |
| Auxillary Box                  | No Auxillary Box  |
| Auxillary Box Lead Termination | None  |
| Base Indicator                 | No Mounting   |
| Bearing Grease Type            | Polyrex EM (-20F +300F)                                     |
| Blower                         | None  |
| Constant Torque Speed Range    | 6   |
| Current @ Voltage              | 5.800 A @ 208.0 V<br>5.600 A @ 230.0 V<br>2.800 A @ 460.0 V |
| Design Code                    | B   |
| Drip Cover                     | No Drip Cover   |
| Duty Rating                    | CONT  |
| Efficiency @ 100% Load         | 86.5 %  |
| Electrically Isolated Bearing  | Not Electrically Isolated                                   |

## Part detail

|              |            |
|--------------|------------|
| Revision     | B          |
| Type         | AC         |
| Mech. spec.  | 35E4327    |
| Base         |            |
| Status       | PRD/A      |
| Elec. spec.  | 35WGG073   |
| Layout       | 35LYE4327  |
| Eff. date    | 07-27-2023 |
| CD Diagram   | CD0005     |
| Poles        | 04         |
| Leads        | 9#18       |
| Proprietary  | False      |
| Created date | 01-10-2022 |

|                               |                     |
|-------------------------------|---------------------|
| Feedback Device               | NO FEEDBACK         |
| Front Shaft Indicator         | None                |
| Heater Indicator              | No Heater           |
| High Voltage Full Load Amps   | 2.8 a               |
| Insulation Class              | F                   |
| Inverter Code                 | Inverter Ready      |
| KVA Code                      | K                   |
| Lifting Lugs                  | No Lifting Lugs     |
| Locked Bearing Indicator      | Locked Bearing      |
| Max Speed                     | 2700 rpm            |
| Motor Lead Quantity/Wire Size | 9 @ 18 AWG          |
| Motor Lead Termination        | Flying Leads        |
| Motor Standards               | NEMA                |
| Motor Type                    | 3528M               |
| Mounting Arrangement          | F1                  |
| Number of Poles               | 4                   |
| Overall Length                | 13.35 IN            |
| Power Factor                  | 77                  |
| Product Family                | Dirty Duty Plus     |
| Pulley End Bearing Type       | Sealed Bearing      |
| Pulley Face Code              | C-Face              |
| Pulley Shaft Indicator        | Standard            |
| Rodent Screen                 | None                |
| Service Factor                | 1.15                |
| Shaft Diameter                | 0.875 IN            |
| Shaft Ground Indicator        | No Shaft Grounding  |
| Shaft Rotation                | Reversible          |
| Shaft Slinger Indicator       | No Slinger          |
| Speed                         | 1760 rpm            |
| Speed Code                    | Single Speed        |
| Starting Method               | Direct on line      |
| Thermal Device - Bearing      | None                |
| Thermal Device - Winding      | None                |
| Vibration Sensor Indicator    | No Vibration Sensor |

Winding Thermal 1

None

---

Winding Thermal 2

None

---

**Nameplate**

| NP3504              |               |                 |      |                   |      |                 |    |  |  |
|---------------------|---------------|-----------------|------|-------------------|------|-----------------|----|--|--|
| <b>CAT NO</b>       | VEDM3558T     |                 |      |                   |      |                 |    |  |  |
| <b>SPEC.</b>        | 35E4327G073G1 | <b>ENCL</b>     | TEFC |                   |      |                 |    |  |  |
| <b>FRAME</b>        | 145TC         | <b>HP</b>       | 2    |                   |      |                 |    |  |  |
| <b>VOLTS</b>        | 230/460       |                 |      |                   |      |                 |    |  |  |
| <b>FLA</b>          | 5.6/2.8       | <b>I.P.</b>     | 56   |                   |      |                 |    |  |  |
| <b>RPM</b>          | 1760          | <b>RPM MAX</b>  | 2700 |                   |      |                 |    |  |  |
| <b>HZ</b>           | 60            | <b>PH</b>       | 3    | <b>CLASS</b>      | F    |                 |    |  |  |
| <b>SER.F.</b>       | 1.15          | <b>DES</b>      | B    | <b>CC</b>         | 010A |                 |    |  |  |
| <b>NEMA-NOM-EFF</b> | 86.5          |                 |      |                   |      |                 |    |  |  |
| <b>RATING</b>       | 40C AMB-CONT  |                 |      |                   |      |                 |    |  |  |
| <b>DE BRG</b>       | 6205          | <b>ODE BRG</b>  | 6203 |                   |      |                 |    |  |  |
| <b>GREASE</b>       | POLYREX EM    |                 |      |                   |      |                 |    |  |  |
| <b>INV.TYPE</b>     |               | <b>C HP FR</b>  | 60   | <b>C HP TO</b>    | 90   |                 |    |  |  |
| <b>CT HZ FROM</b>   | 6             | <b>CT HZ TO</b> | 60   | <b>VT HZ FROM</b> | 6    | <b>VT HZ TO</b> | 60 |  |  |
| <b>SER.NO</b>       | SFA 6.26/3.13 |                 |      |                   |      |                 |    |  |  |

**AC Induction Motor Performance Data**

Record # 87157

Typical performance - not guaranteed values

| <b>Winding: 35WGG073-R001</b> |                          | <b>Type: 3528M</b> |  | <b>Enclosure: TEFC</b>   |  |
|-------------------------------|--------------------------|--------------------|--|--------------------------|--|
| <b>Nameplate Data</b>         |                          |                    | <b>460 V, 60 Hz:<br/>High Voltage Connection</b> |                          |  |
| <b>Rated Output (HP)</b>      | 2                        |                    | <b>Full Load Torque</b>                          | 5.99 LB-FT               |  |
| <b>Volts</b>                  | 230/460                  |                    | <b>Start Configuration</b>                       | direct on line           |  |
| <b>Full Load Amps</b>         | 5.6/2.8                  |                    | <b>Breakdown Torque</b>                          | 20.5 LB-FT               |  |
| <b>R.P.M.</b>                 | 1760                     |                    | <b>Pull-up Torque</b>                            | 13.8 LB-FT               |  |
| <b>Hz</b>                     | <b>60 Phase</b>          | 3                  | <b>Locked-rotor Torque</b>                       | 15 LB-FT                 |  |
| <b>NEMA Design Code</b>       | <b>B KVA Code</b>        | K                  | <b>Starting Current</b>                          | 22.5 A                   |  |
| <b>Service Factor (S.F.)</b>  | 1.15                     |                    | <b>No-load Current</b>                           | 1.62 A                   |  |
| <b>NEMA Nom. Eff.</b>         | <b>86.5 Power Factor</b> | 77                 | <b>Line-line Res. @ 25°C</b>                     | 9.54 Ω                   |  |
| <b>Rating - Duty</b>          | 40C AMB-CONT             |                    | <b>Temp. Rise @ Rated Load</b>                   | 64°C                     |  |
| <b>S.F. Amps</b>              | 6.3/3.15                 |                    | <b>Temp. Rise @ S.F. Load</b>                    | 77°C                     |  |
|                               |                          |                    | <b>Locked-rotor Power Factor</b>                 | 57.9                     |  |
|                               |                          |                    | <b>Rotor inertia</b>                             | 0.202 lb-ft <sup>2</sup> |  |

**Load Characteristics 460 V, 60 Hz, 2 HP**

| <b>% of Rated Load</b> | <b>25</b> | <b>50</b> | <b>75</b> | <b>100</b> | <b>125</b> | <b>150</b> | <b>S.F.</b> |
|------------------------|-----------|-----------|-----------|------------|------------|------------|-------------|
| <b>Power Factor</b>    | 35        | 55        | 68        | 76         | 81         | 84         | 80          |
| <b>Efficiency</b>      | 78.3      | 85.3      | 86.9      | 86.5       | 85.3       | 83.6       | 86.1        |
| <b>Speed</b>           | 1791      | 1782      | 1771      | 1760       | 1748       | 1734       | 1754        |
| <b>Line amperes</b>    | 1.71      | 1.97      | 2.34      | 2.82       | 3.36       | 3.97       | 3.13        |

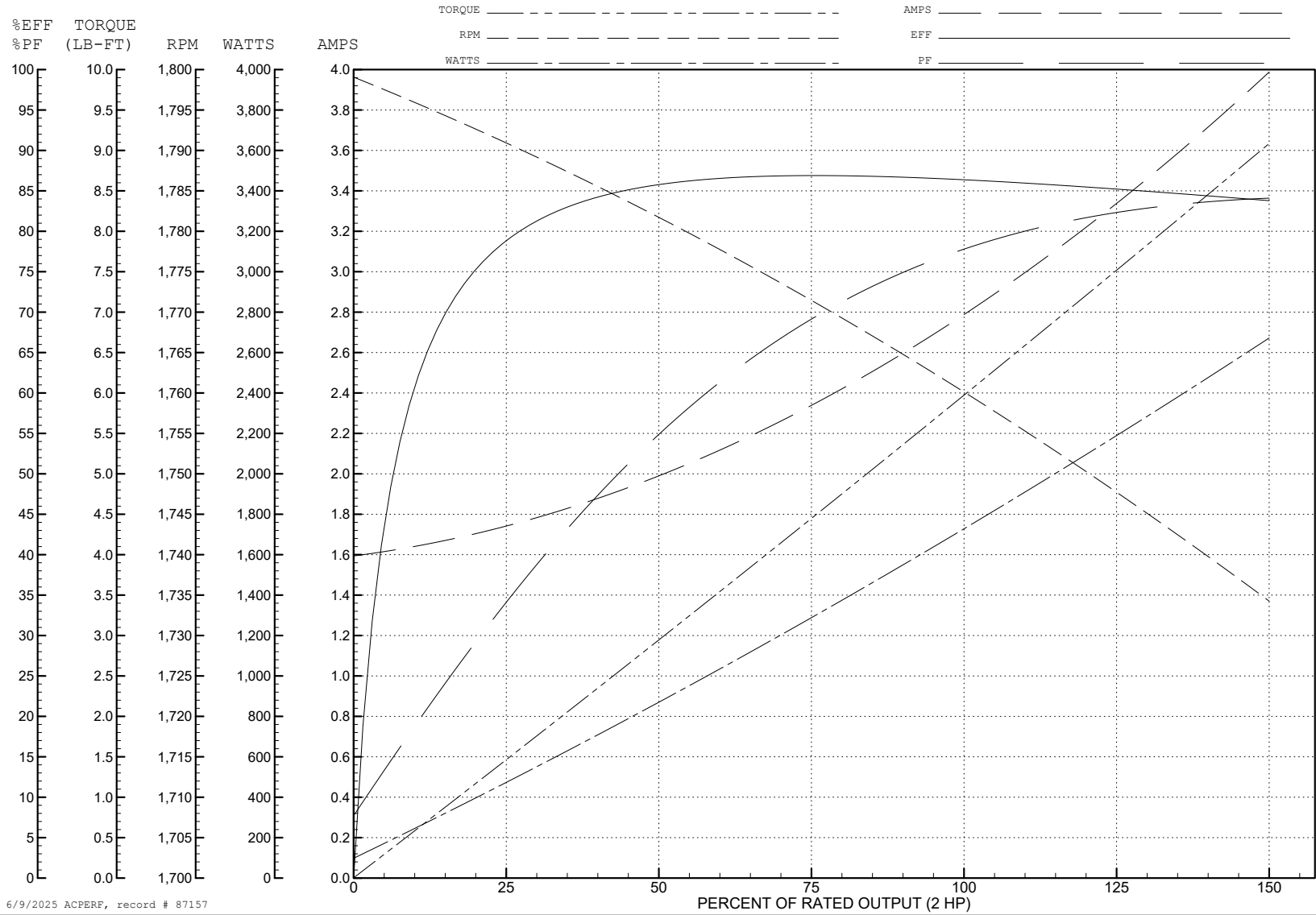
ABB Motors and Mechanical Inc.

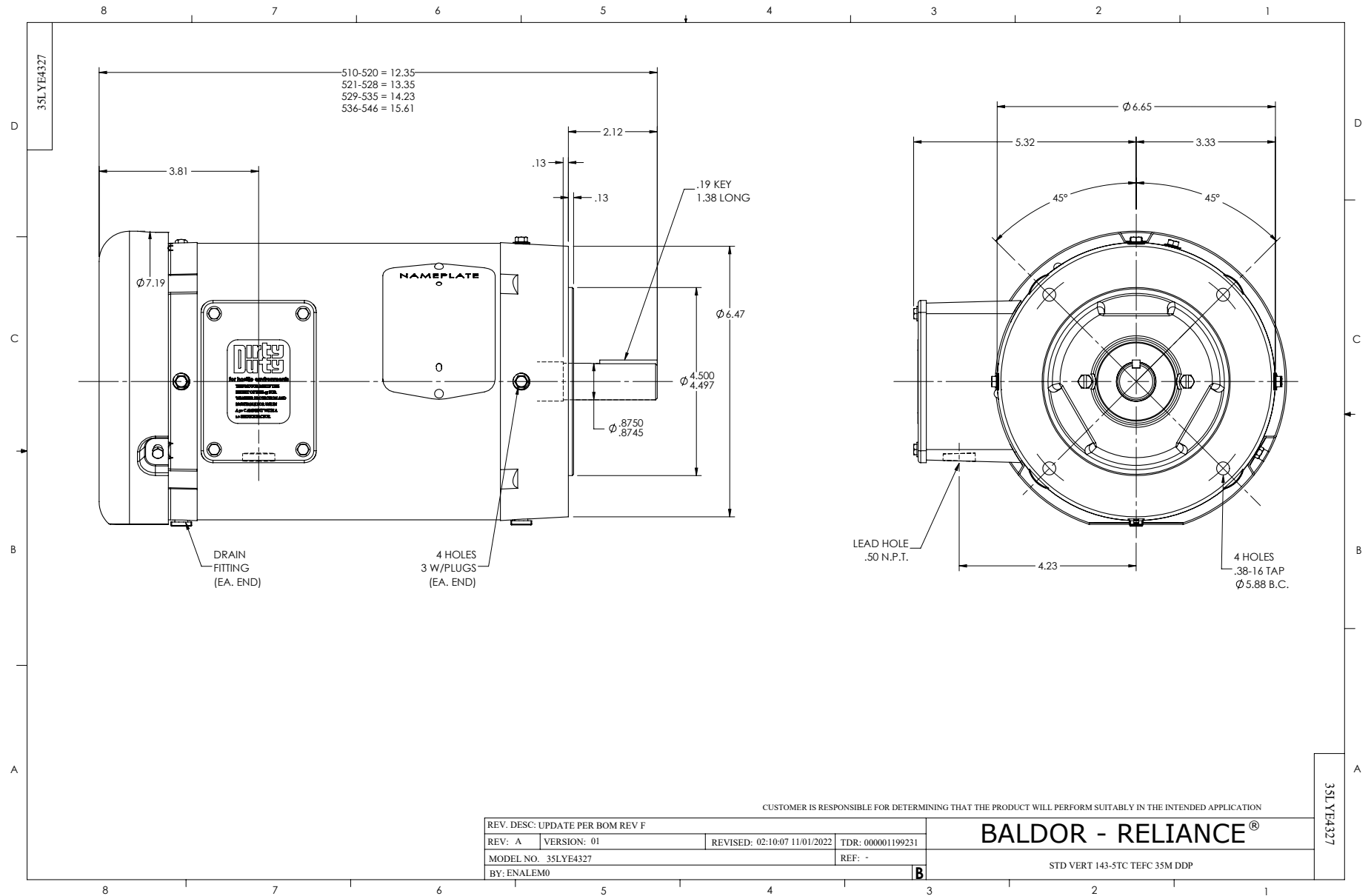
WINDING # 35WGG073

Typical performance - not guaranteed values.

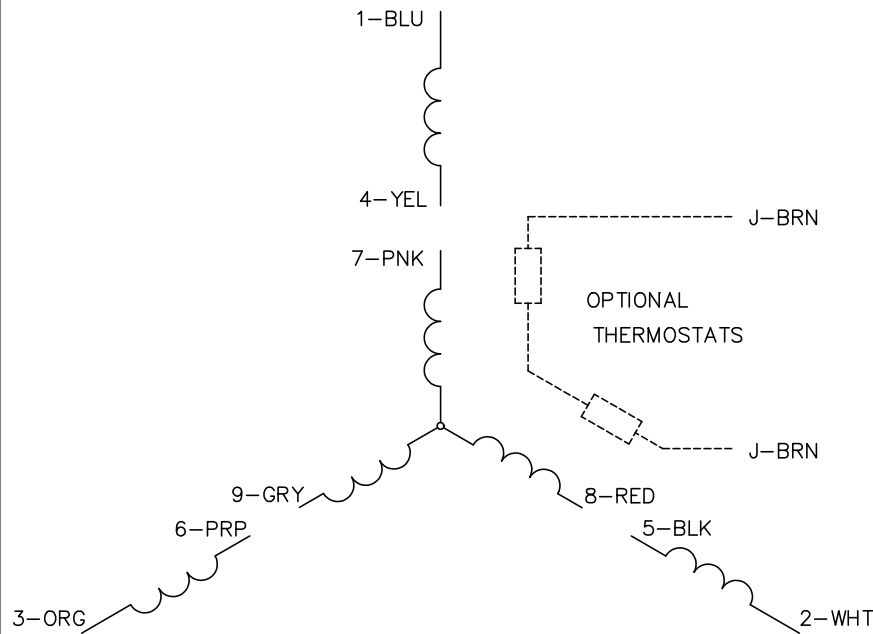
2 HP 3 PH 60 HZ 1760 RPM 460 V 3528M

TORQUES (LB-FT): PO=20.5 PU=13.8 LR=15 LRA=22.5





CD0005

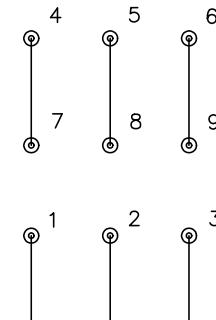


LOW VOLTAGE  
(2Y)



LINE

HIGH VOLTAGE  
(1Y)



LINE

NOTES:

1. INTERCHANGE ANY TWO LINE LEADS TO REVERSE ROTATION.
2. OPTIONAL THERMOSTATS ARE PROVIDED WHEN SPECIFIED.
3. ACTUAL NUMBER OF INTERNAL PARALLEL CIRCUITS MAY BE A MULTIPLE OF THOSE SHOWN ABOVE.
4. LEAD COLORS ARE OPTIONAL. LEADS MUST ALWAYS BE NUMBERED AS SHOWN.

CD0005

|   |         |                         |              |
|---|---------|-------------------------|--------------|
| REV. DESC: REVISE TO SHOW OPTIONAL COLORS |         |                         |              |
| REV. LTR: E                               | BY: JLP | REVISED: 01/19/99 10:15 | TDR: 0171435 |
| S00000                                    |         | FILE: AAA00005140       | MDL: -       |
|   |         | MTL: -                  |              |

**BALDOR ELECTRIC Co.**

3PH, DV, 9 LEADS