



Customer information packet

MVM3460C

.37KW, 3450RPM, 3PH, 60HZ, D71C, 3320M, TEFC

Specifications

Enclosure	TEFC
Frame	D71C
Frame Material	Steel
Frequency	60.00 Hz
Motor Letter Type	Three Phase
Output @ Frequency	.500 HP @ 60 HZ
Phase	3
Synchronous Speed @ Frequency	3600 RPM @ 60 HZ
Voltage @ Frequency	460.0 V @ 60 HZ 230.0 V @ 60 HZ
Agency Approvals	CSA UR
Ambient Temperature	40 °C
Auxillary Box	No Auxillary Box
Auxillary Box Lead Termination	None
Base Indicator	No Mounting
Bearing Grease Type	Polyrex EM (-20F +300F)
Blower	None
Current @ Voltage	.600 A @ 460.0 V 1.200 A @ 230.0 V 1.500 A @ 208.0 V
Design Code	B
Drip Cover	No Drip Cover
Duty Rating	CONT
Efficiency @ 100% Load	72.0 %
Electrically Isolated Bearing	Not Electrically Isolated
Feedback Device	NO FEEDBACK
Feedback Signal	NONE
Frame Prefix	D
Front Face Code	Standard
Front Shaft Indicator	None
Heater Indicator	No Heater

Part detail

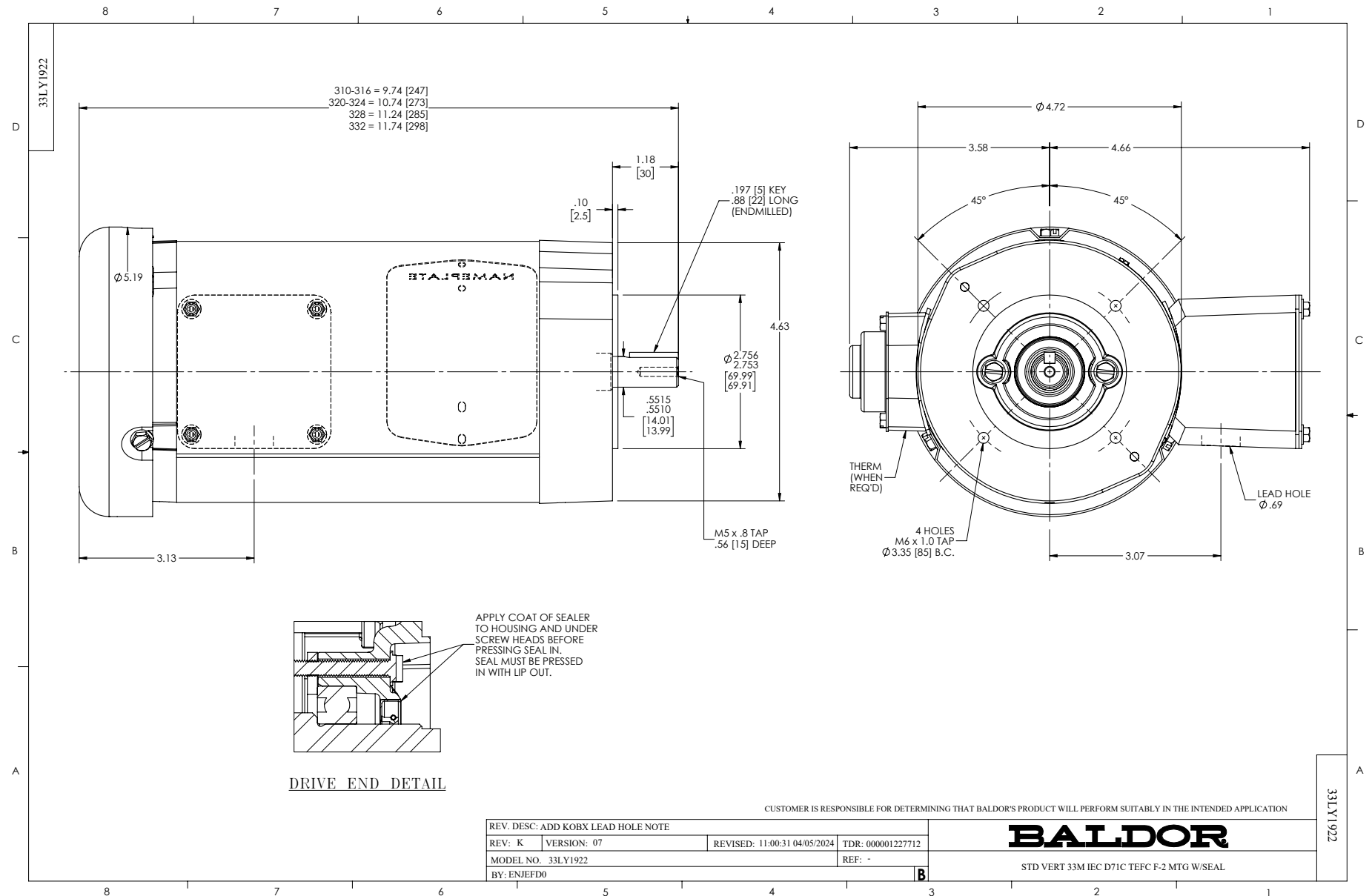
Revision	AP
Type	AC
Mech. spec.	33-1922
Base	
Status	PRD/A
Elec. spec.	33WG0425
Layout	33LY1922
Eff. date	10-24-2024
CD Diagram	CD0005A05
Poles	02
Leads	9#18
Proprietary	False
Created date	06-25-2007

High Voltage Full Load Amps	0.6 a
Insulation Class	B
Inverter Code	Not Inverter
KVA Code	-
Lifting Lugs	No Lifting Lugs
Locked Bearing Indicator	Locked Bearing
Motor Lead Exit	Ko Box
Motor Lead Quantity/Wire Size	9 @ 18 AWG
Motor Lead Termination	Flying Leads
Motor Standards	IEC
Motor Type	3320M
Mounting Arrangement	F2
Number of Poles	2
Overall Length	10.74 IN
Power Factor	71
Product Family	General Purpose
Pulley End Bearing Type	Ball
Pulley Face Code	C-Face
Pulley Shaft Indicator	Tapped & Key
Rodent Screen	None
RoHS Status	ROHS COMPLIANT
Service Factor	1.25
Shaft Diameter	0.552 IN
Shaft Extension Location	Pulley End
Shaft Ground Indicator	No Shaft Grounding
Shaft Rotation	Reversible
Shaft Slinger Indicator	No Slinger
Speed	3450 rpm
Speed Code	Single Speed
Starting Method	Direct on line
Thermal Device - Bearing	None
Thermal Device - Winding	None
Vibration Sensor Indicator	No Vibration Sensor
Winding Thermal 1	None

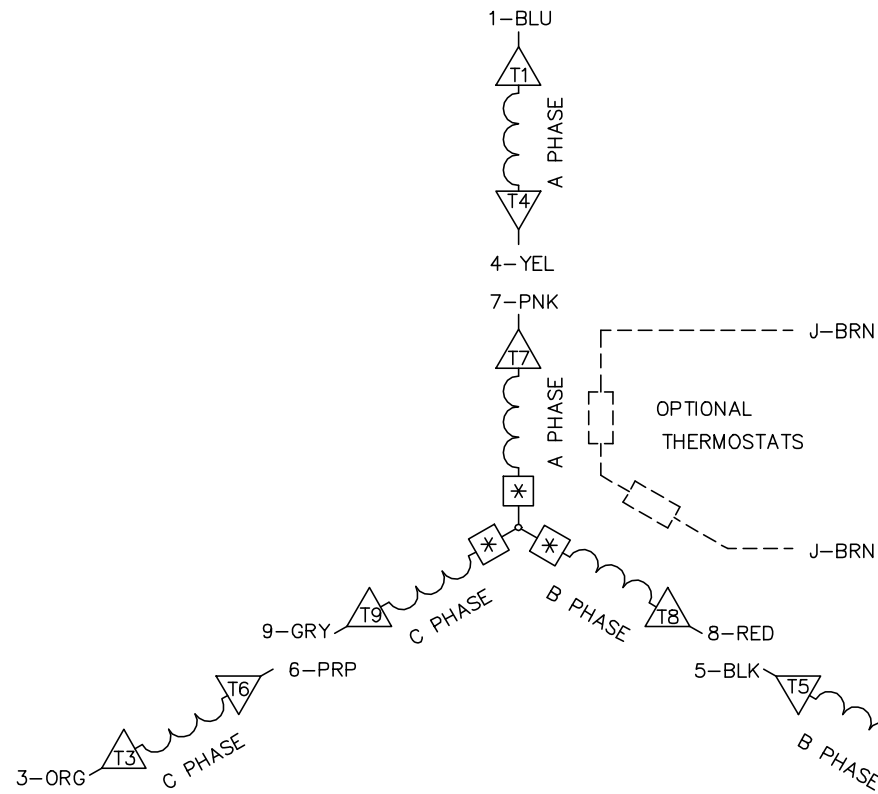
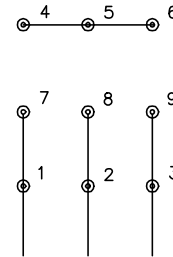
Winding Thermal 2	None
-------------------	------

Nameplate

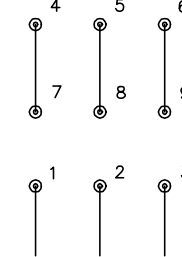
NP1379L									
CAT.NO.	MVM3460C								
SPEC.	33-1922-425								
IEC FRAME	D71C	K.W.		.37 TE					
VOLTS	230/460 ENCL TEFC								
AMP	1.2/.6								
RPM	3450			I.P.		54			
HZ	60		PH		3	CL		B	
SER.F.	1.25		DES		B	CODE		-	
NEMA-NOM-EFF	72		PF		71				
RATING	40C AMB-CONT								
CC									
DE	6203	ODE		6203					
SER. #									
	SFA 1.4/.7								



CD0005A05

LOW VOLTAGE
(2Y)

LINE

HIGH VOLTAGE
(1Y)

LINE

NOTES:

1. INTERCHANGE ANY TWO LINE LEADS TO REVERSE ROTATION.
2. OPTIONAL THERMOSTATS ARE PROVIDED WHEN SPECIFIED.
3. ACTUAL NUMBER OF INTERNAL PARALLEL CIRCUITS MAY BE A MULTIPLE OF THOSE SHOWN ABOVE.
4. LEAD COLORS ARE OPTIONAL. LEADS MUST ALWAYS BE NUMBERED AS SHOWN.
5. =MAGNET WIRE COIL END WITH I.D. NUMBER.
6. =MAGNET WIRE COIL END WITH I.D. SYMBOL.
7. SEE CW PRINT FOR NEST TO NEST CROSSOVER CONNECTIONS.

REV. DESC: ADD NEST NOTE

REV. LTR: C

VERSION: 03

TDR: 000000445597

CD0005A05

FILE: \CKA\00024\847

REVISED: 12:51:06 11/15/2007

MTL: -

BY: CKMICRO

BALDOR • DODGE • RELIANCE

3PH, DV, 9 LEADS, CK

CD0005A05