

BALDOR • RELIANCE

Customer information packet

L3514A

1.5HP, 1725RPM, 1PH, 60HZ, 56H, 3532LC, TEFC, F

Class - None

Division - Not Applicable

Copyright © All product information within this document is subject to ABB Motors and Mechanical Inc. copyright © protection, unless otherwise noted.

6/9/2025 4:07:01 AM

Specifications

Enclosure	TEFC
Frame	56H
Frame Material	Steel
Frequency	60.00 Hz
Haz Area Class and Group	None
Haz Area Division	Not Applicable
Motor Letter Type	Cap Start, Cap Run
Output @ Frequency	1.500 HP @ 60 HZ
Phase	1
Synchronous Speed @ Frequency	1800 RPM @ 60 HZ
Voltage @ Frequency	115.0 V @ 60 HZ 230.0 V @ 60 HZ
Agency Approvals	C UR US
Ambient Temperature	40 °C
Auxillary Box	No Auxillary Box
Auxillary Box Lead Termination	None
Base Indicator	Rigid
Bearing Grease Type	Polyrex EM (-20F +300F)
Blower	None
Current @ Voltage	13.400 A @ 115.0 V 6.700 A @ 230.0 V
Design Code	L
Drip Cover	No Drip Cover
Duty Rating	CONT
Efficiency @ 100% Load	80.0 %
Electrically Isolated Bearing	Not Electrically Isolated
Feedback Device	NO FEEDBACK
Front Shaft Indicator	None
Heater Indicator	No Heater
High Voltage Full Load Amps	6.7 a
Insulation Class	F
Inverter Code	Not Inverter

Part detail

Revision	-
Type	AC
Mech. spec.	35J385
Base	
Status	PRD/A
Elec. spec.	35WGG377
Layout	35LYJ385
Eff. date	12-02-2024
CD Diagram	CD0016A02
Poles	04
Leads	7#18,1#16 #4TH
Proprietary	False
Created date	11-14-2024

KVA Code	H
Lifting Lugs	No Lifting Lugs
Locked Bearing Indicator	No Locked Bearing
Motor Lead Quantity/Wire Size	7 @ 18 AWG
Motor Lead Termination	Flying Leads
Motor Standards	NEMA
Motor Type	3532LC
Mounting Arrangement	F1
Number of Poles	4
Overall Length	13.79 IN
Power Factor	90
Product Family	General Purpose
Pulley End Bearing Type	Ball
Pulley Face Code	Standard
Pulley Shaft Indicator	Standard
Rodent Screen	None
Service Factor	1.00
Shaft Diameter	0.625 IN
Shaft Ground Indicator	No Shaft Grounding
Shaft Rotation	Reversible
Shaft Slinger Indicator	No Slinger
Speed	1725 rpm
Speed Code	Single Speed
Starting Method	Direct on line
Thermal Device - Bearing	None
Thermal Device - Winding	Do Not Use Eve-Not Valid
Vibration Sensor Indicator	No Vibration Sensor
Winding Thermal 1	Automatic Thermal Overload
Winding Thermal 1 Location	SB
Winding Thermal 2	None

Nameplate

NP1257L									
CAT.NO.	L3514A								
SPEC.	35J385G377G1								
HP	1.5								
VOLTS	115/230								
AMP	13.4/6.7								
RPM	1725								
FRAME	56H			HZ	60		PH	1	
SER.F.	1.00	CODE	H	DES	L	CL	F		
NEMA-NOM-EFF	80	PF	90						
RATING	40C AMB-CONT								
CC									
DE	6205	ODE	6203						
ENCL	TEFC	SN							

Accessories

Part number	Description	Multiplier
35-8762	C FACE KIT	A8
35EP1506A01SP	D-FLANGE KIT	A8

AC Induction Motor Performance Data

Record # 88874

Typical performance - not guaranteed values

Winding: 35WGG377-R002		Type: 3532LC		Enclosure: TEFC	
Nameplate Data			230 V, 60 Hz: High Voltage Connection		
Rated Output (HP)	1.5	Full Load Torque	4.56 LB-FT		
Volts	115/230	Start Configuration	direct on line		
Full Load Amps	13.4/6.7	Breakdown Torque	9.9 LB-FT		
R.P.M.	1725	Pull-up Torque	8.06 LB-FT		
Hz	60	Phase	1	Locked-rotor Torque	12.98 LB-FT
NEMA Design Code	L	KVA Code	H	Starting Current	43.97 A
Service Factor (S.F.)			1	No-load Current	0.877 A
NEMA Nom. Eff.	80	Power Factor	90	Line-line Res. @ 25°C	0.517 Ω A Ph 1.32 Ω B Ph
Rating - Duty	40C AMB-CONT		Temp. Rise @ Rated Load	67°C	
			Locked-rotor Power Factor	91.1	
			Rotor inertia	0.232 lb-ft ²	

Load Characteristics 230 V, 60 Hz, 1.5 HP

% of Rated Load	25	50	75	100	125	150
Power Factor	95	98	98	98	97	96
Efficiency	68.1	80.4	82.5	81.1	76.9	69.8
Speed	1782	1765	1746	1723	1690	1641
Line amperes	1.83	3.08	4.5	6.1	8.12	10.79

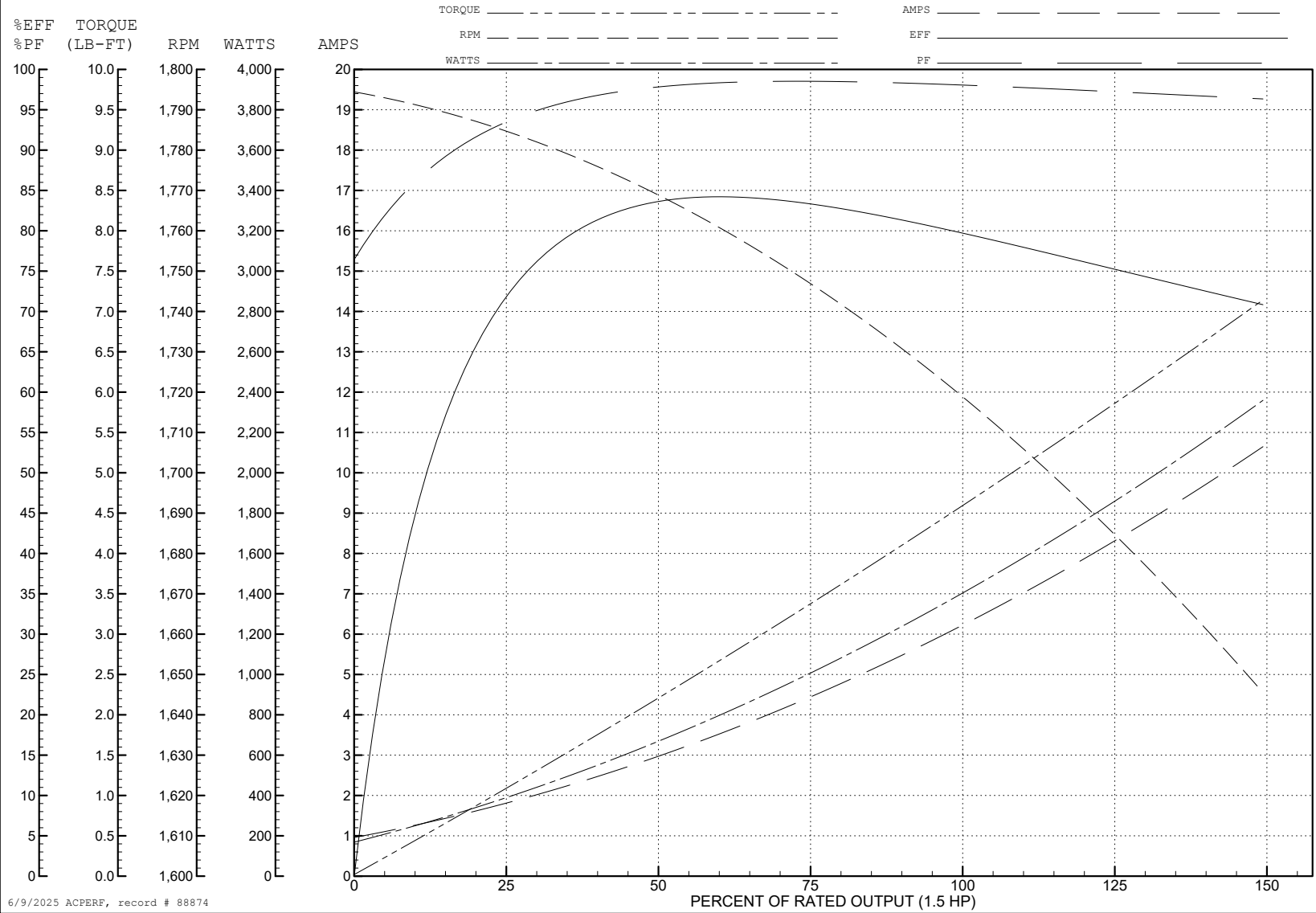
ABB Motors and Mechanical Inc.

WINDING # 35WGG377

Typical performance - not guaranteed values.

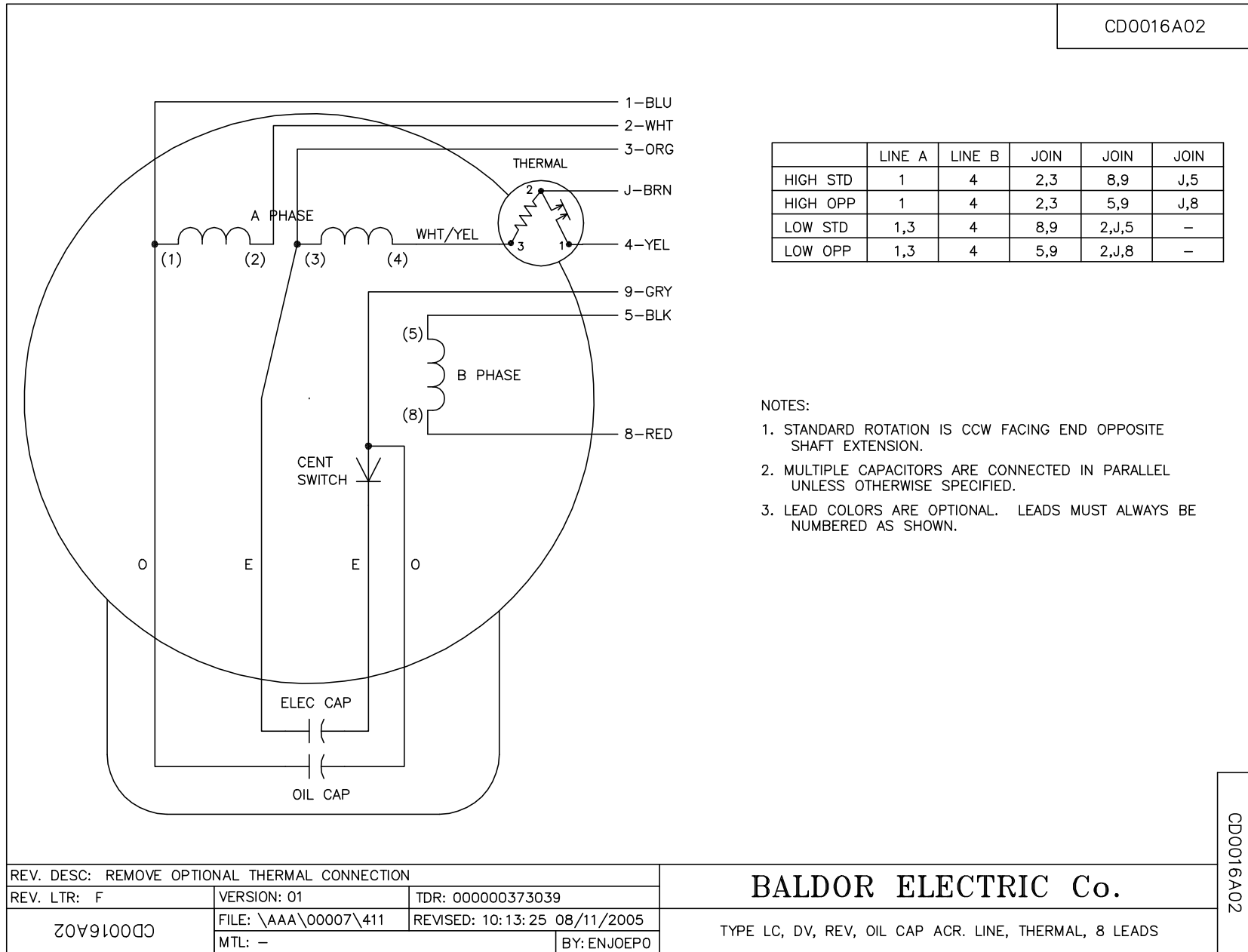
1.5 HP 1 PH 60 HZ 1725 RPM 230 V 3532LC

TORQUES (LB-FT): PO=9.9 PU=8.06 LR=12.98 LRA=43.97



6/9/2025 ACPERF, record # 88874

CD0016A02



	LINE A	LINE B	JOIN	JOIN	JOIN
HIGH STD	1	4	2,3	8,9	J,5
HIGH OPP	1	4	2,3	5,9	J,8
LOW STD	1,3	4	8,9	2,J,5	-
LOW OPP	1,3	4	5,9	2,J,8	-

NOTES:

1. STANDARD ROTATION IS CCW FACING END OPPOSITE SHAFT EXTENSION.
2. MULTIPLE CAPACITORS ARE CONNECTED IN PARALLEL UNLESS OTHERWISE SPECIFIED.
3. LEAD COLORS ARE OPTIONAL. LEADS MUST ALWAYS BE NUMBERED AS SHOWN.

REV. DESC: REMOVE OPTIONAL THERMAL CONNECTION		
REV. LTR: F	VERSION: 01	TDR: 000000373039
CD0016A02	FILE: \AAA\00007\411	REVISED: 10:13:25 08/11/2005
	MTL: -	BY: ENJOEPO

BALDOR ELECTRIC Co.

TYPE LC, DV, REV, OIL CAP ACR. LINE, THERMAL, 8 LEADS

CD0016A02