

**BALDOR® • RELIANCE™**

---

# Customer information packet

## EM2558T-5

150HP, 1785RPM, 3PH, 60HZ, 444T, A44062M, ODP

Class - None

Division - Not Applicable

Copyright © All product information within this document is subject to ABB Motors and Mechanical Inc. copyright © protection, unless otherwise noted.

6/9/2025 4:28:02 AM

## Specifications

Enclosure	DP
Frame	444T
Frame Material	Iron
Frequency	60.00 Hz
Haz Area Class and Group	None
Haz Area Division	Not Applicable
Motor Letter Type	Three Phase
Output @ Frequency	150.000 HP @ 60 HZ
Phase	3
Synchronous Speed @ Frequency	1800 RPM @ 60 HZ
Voltage @ Frequency	575.0 V @ 60 HZ
Agency Approvals	CCSAUSEEV
Ambient Temperature	40 °C
Auxillary Box	No Auxillary Box
Base Indicator	Rigid
Bearing Grease Type	Polyrex EM (-20F +300F)
Current @ Voltage	136.000 A @ 575.0 V
Design Code	B
Drip Cover	No Drip Cover
Duty Rating	CONT
Efficiency @ 100% Load	96.2 %
Feedback Device	NO FEEDBACK
Heater Indicator	No Heater
High Voltage Full Load Amps	136.0 a
Insulation Class	F
Inverter Code	Inverter Ready
KVA Code	G
Lifting Lugs	No Lifting Lugs
Motor Lead Quantity/Wire Size	3 @ 1 AWG
Motor Standards	NEMA
Motor Type	A44062M
Mounting Arrangement	F1

## Part detail

Revision	K
Type	AC
Mech. spec.	
Base	
Status	PRD/A
Elec. spec.	A44WG3532
Layout	617428-042
Eff. date	09-27-2023
CD Diagram	416820-036
Poles	04
Leads	3#1
Proprietary	False
Created date	12-17-2010

<b>Number of Poles</b>	4
<b>Overall Length</b>	39.56 IN
<b>Power Factor</b>	86
<b>Product Family</b>	Other
<b>Pulley End Bearing Type</b>	Ball
<b>Pulley Face Code</b>	Standard
<b>Service Factor</b>	1.15
<b>Shaft Diameter</b>	3.375 IN
<b>Shaft Ground Indicator</b>	No Shaft Grounding
<b>Shaft Rotation</b>	Reversible
<b>Shaft Slinger Indicator</b>	No Slinger
<b>Speed</b>	1785 rpm
<b>Speed Code</b>	Single Speed
<b>Starting Method</b>	Direct on line
<b>Thermal Device - Bearing</b>	None
<b>Thermal Device - Winding</b>	None

**Nameplate**

**NP2377L**

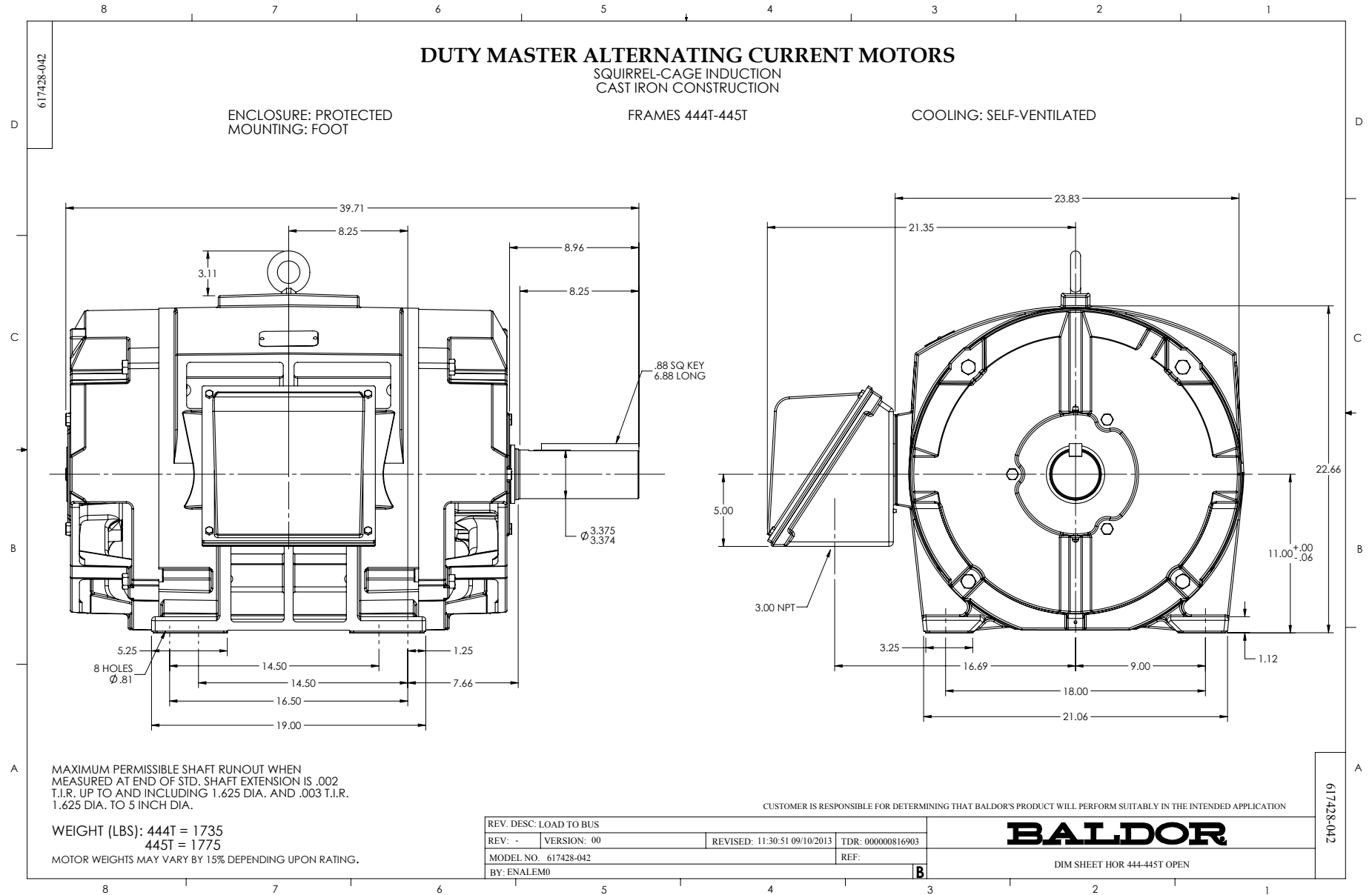
<b>CAT.NO.</b>	EM2558T-5	<b>SPEC NO.</b>	P44G1798						
<b>HP</b>	150	<b>AMPS</b>	136	<b>VOLTS</b>	575	<b>DESIGN</b>	B		
<b>FRAME</b>	444T	<b>RPM</b>	1785	<b>HZ</b>	60	<b>AMB</b>	40	<b>SF</b>	1.15
<b>DRIVE END BEARING</b>	90BC03J30X	<b>PHASE</b>	3	<b>DUTY</b>	CONT	<b>INSUL.CLASS</b>	F		
<b>OPP D.E. BEARING</b>	90BC03J30X	<b>TYPE</b>	P	<b>ENCL</b>	DP	<b>CODE</b>	G		
<b>SER.NO.</b>		<b>POWER FACTOR</b>	86	<b>NEMA-NOM-EFFICIENCY</b>	96.2				
		<b>MAX CORR KVAR</b>	30.0	<b>GUARANTEED EFFICIENCY</b>	95.8				
		<b>NEMA NOM/CSA QUOTED EFF</b>							
		<b>MOTOR WEIGHT</b>							

**Accessories**

<b>Part number</b>	<b>Description</b>	<b>Multiplier</b>
089439052B	C-FACE BRKT 440 089439052WCA	
089439053B	D-FLANGE BRKT 440 089439053WCA	P1









416820-036

A-C MOTOR  
CONNECTION DIAGRAM  
STANDARD 3 LEAD CONNECTED



(N.P. 1575-BA)

416820-036

REV. DESC: LOADED TO BUS, C/R 335225		
REV. LTR: -	VERSION: 00	TDR: 000000538207
FILE: \MGA\00000\682	REVISED: 11:54:06 04/30/2010	
MTL: -	BY: RAGRA	

**BALDOR**

CONN DIAG - STANDARD 3 LEAD  
SH 1 of 1