

BALDOR® • RELIANCE 

Product Information Packet

D2007P

7.5HP/1750RPM/D PHASE/PDFG/NEMA1810

Part Detail							
Revision:	C	Status:	PRD/A	Change #:		Proprietary:	No
Type:	DC	Prod. Type:		Elec. Spec:		CD Diagram:	
Enclosure:		Mfg Plant:		Mech. Spec:		Layout:	875
Frame:		Mounting:		Poles:	00	Created Date:	02-17-2014
Base:		Rotation:	R	Insulation:		Eff. Date:	10-28-2016
Field Type:		Literature:		Elec. Diagram:		Replaced By:	

Specs			
Frame:	1810AT		
Frame Material:	Steel		
Agency Approvals:	CSA		
Base Indicator:	Rigid		
Bearing Grease Type:	No Grease		
Drip Cover:	No Drip Cover		
Feedback Device:	NO FEEDBACK		
Heater Indicator:	No Heater		
Insulation Class:	F		
Lifting Lugs:	Standard Lifting Lugs		
Shaft Extension Location:	Pulley End		
Shaft Ground Indicator:	No Shaft Grounding		
Shaft Slinger Indicator:	No Slinger		
Motor Standards:	NEMA		

Nameplate NP1734										
CAT.NO.	D2007P			MODEL	T18R8007					
HP	7.5		RPM	1750/ 2300		FRAME	1810AT			
ARM V	240		ARM A	27.80		WOUND	STR. SHUNT			
FLD V	150/ 300		FLD A	.92-.48/.46-.24						
CONN			OHMS			CL	F			
ENCL	DPFG		DUTY	CONT		MX AMB	40			
P CODE	D		CTSR			SER.F.	1.0			
S/N			E/S	K00009A A						
O.D.E. BRG.	6205		D.E. BRG.	6206		BRUSH	18044-4			
									QTY	2

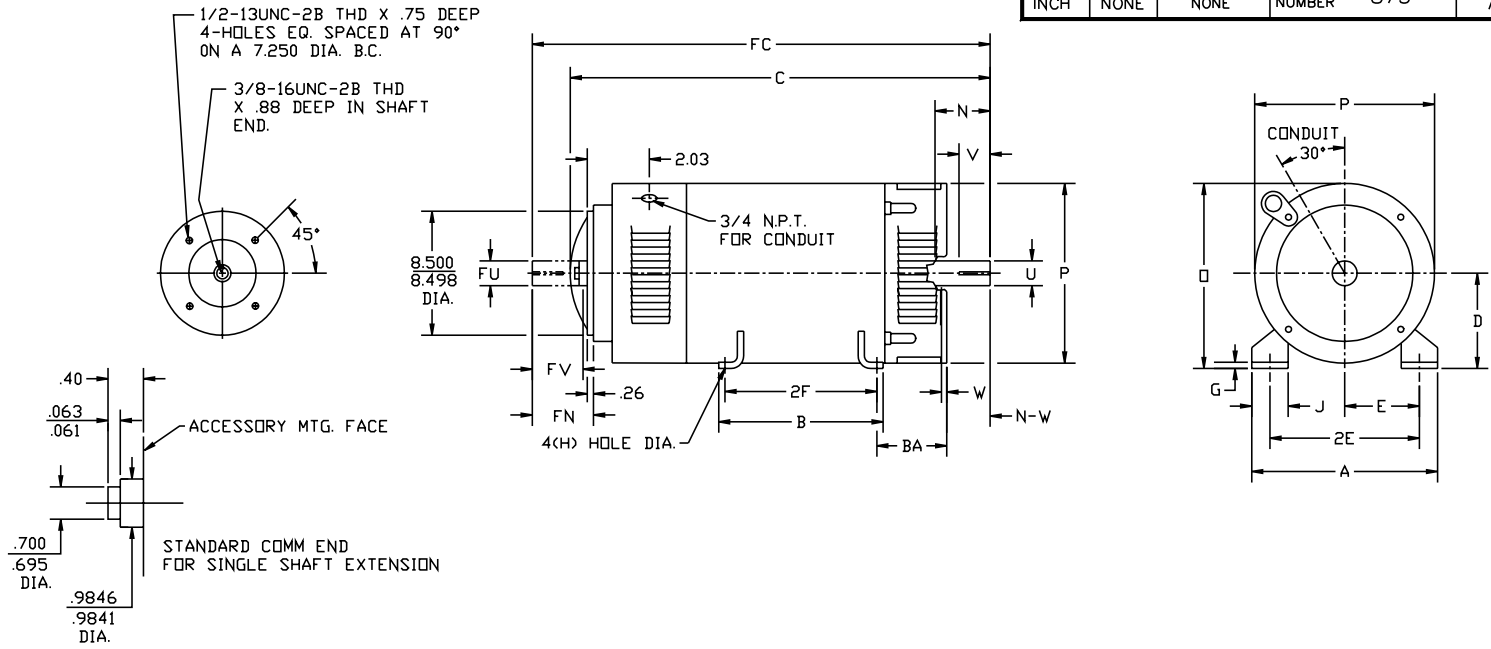
Parts List		
Part Number	Description	Quantity
SA281194	SA T18R8007	1.000 EA
AA015362	AA T18R8007	1.000 EA
NP1734	NPL,BALDOR DC MTR ALUMINUM	1.000 EA
15209	LABEL CONNECTIONS & TERMINAL MARKIN	1.000 EA
18010-3	ARM END LAM.	2.000 EA
18017-1	BALANCE RING,STAMPING 7 GA (.188 THK)	2.000 EA
18416-1	FAN, MACH, 180 SERIES	1.000 EA
ME3002A06	COMMUTATOR ISOLATOR FOR 18043 COMM	1.000 EA
032018012CK	HHCS 3/8-16X1-1/2 PLTED	6.000 EA
032018012CK	HHCS 3/8-16X1-1/2 PLTED	6.000 EA
046001026F	THERMOSTAT	1.000 EA
18040-3	INTERPOLE STACK	2.000 EA
424504003CB	SHIM PACKAGE	1.000 EA
424508002A	BALDOR ROUND DC FRAME INSULATION B/M	1.000 EA
032130024BA	HSHCS	4.000 EA
18032	FE BRACKET, MACH, FR 180	1.000 EA
032130008BA	5/16-18 X 1.0 HSHCS	4.000 EA
15490	LIFTING LUG,180 FRAME	2.000 EA
18082-1	BRACKET	1.000 EA
HA4048A05	DRIVE-IN PLUG,1.38"EXPAN.PLUG,	1.000 EA
HW5100A05	WVY WSHR F/205 & 304 BRGS	1.000 EA
032018004AK	HHCS 1/4-20X1/2 PLATED	2.000 EA
034000012AB	WSHR 1/4 STD. PLATED	2.000 EA
034017012AB	LCKW 1/4 STD. PLATED	2.000 EA

Parts List (continued)		
Part Number	Description	Quantity
18006	BRUSH ROCKER ASSY FRAME 180SERIES	1.000 EA
18044-4SP	BRUSH,GR.E41,210 SER.SGL/CARBON #688K-01	2.000 EA
032018004AK	HHCS 1/4-20X1/2 PLATED	12.000 EA
032018006DK	HHCS 1/2-13X3/4 PLATED	4.000 EA
15021-1	ACCESSORY FACE COVER FRAME 180-500 SERIE	1.000 EA
150449-25	T BOX GRD STUD ARG 1/4 20 DIA. STUD	1.000 EA
18019	TERMINAL BOX COVER FRAME 180	1.000 EA
18020	BRUSH VENT COVER FR 18 SERIES #18 GA ST	1.000 EA
18020	BRUSH VENT COVER FR 18 SERIES #18 GA ST	1.000 EA
18026	GASKET,T BOX COVER,FR.1803/32 THK CORK/N	1.000 EA
18027	GASKET,ACCESS CVR,FR.180 3/32 THK DC205(2.000 EA
18033	FAN VENT GARD-BOTTOM FR 18 SERIES,	1.000 EA
18034	FAN VENT GUARD-SIDE FR 18 SERIES,	2.000 EA
WD4100A34	CAPLUG IN T-SERIES T12	1.000 EA
MG1025G05	WILKOFASST, 789.227, MED. GRAY CHAR. MET.	0.100 GA
034180011DA	1/4 SQ X 1.375 KEY	1.000 EA
PA1100	PACK FOR #1 SKID; CUSTOM	1.000 EA
MG5047	VARNISH 004824-001HM	0.200 GA
LB1171	LABEL CARTON 6X6 ON LINE BLANK	1.000 EA
482413015Y	#15 SLVG	6.000 FT
482413009Y	#9 SLEEVING (GREEN)	6.000 FT
041009029B	CONNECTOR, RTD	4.000 EA
041009029E	#8 BUTT CONNECTOR	3.000 EA
MN605	INTEGRAL HP DC MOTORS 2/09	1.000 EA

Accessories		
Part Number	Description	Multiplier
90EP5000A02	C-FACE CONVERSION KIT FOR STOCK MTR,FR 1	

CUSTOMER NAME			MODEL NO.			MTG.		REMARKS:		
CUSTOMER P.O.			FRAME		R.P.M.	PHASE		INSUL		
CERTIFIED BY			H.P.		TYPE	VOLTS		AMB.		
DATE						ENCL				

UNITS: INCH	SCALE: NONE	PROPORTION: NONE	PART NUMBER 875	DWG. SIZE A
-------------	-------------	------------------	-----------------	-------------



FRAME	FOOT MOUNTING				D.E. SHAFT EXTENSION					DRIVE KEY		ACC SHAFT EXTENSION			ACC KEY		FRAME					ARM APPROX. WK ² LBS.FT. ²	APPROXIMATE WEIGHT				
	BA	E	2F	G	H	J	N	N-W	U	V	W	KEY-SQ.	KEY-LONG	FN	FU	FV	KEY-SQ.	KEY-LONG	A	B	C			FC	D	O	P
L182AT	2.75	3.75	4.50	.38	.406	1.50	2.90	2.77	1.125	2.50 ³	.13	.250	1.38	2.28	.875	2.03	.188	1.38	8.81	5.75	15.81	17.37	4.50 ²	8.94	8.88	.28	84 ⁵
L186AT	2.75	3.75	7.00	.38	.406	1.50	2.90	2.77	1.125	2.50 ³	.13	.250	1.38	2.28	.875	2.03	.188	1.38	8.81	8.25	19.31	20.87	4.50 ²	8.94	8.88	.67	159 ⁵
L1810AT	2.75	3.75	11.00	.38	.406	1.50	2.90	2.77	1.125	2.50 ³	.13	.250	1.38	2.28	.875	2.03	.188	1.38	8.81	12.25	22.21	23.78	4.50 ²	9.00	9.00	1.0	195 ⁵

- 1) SHAFT DIAMETERS TO 1.500 TOLERANCE +.0000 - .0005
SHAFT DIAMETERS ABOVE 1.500 TOLERANCE +.0000 - .0010
SHAFT DIAMETERS TO 1.625 RUNOUT .002 T.I.R. MAX.
SHAFT DIAMETERS ABOVE 1.625 RUNOUT .003 T.I.R. MAX.
- 2) 'D' DIMENSION TOLERANCE +.000 - .030
- 3) 'V' DIMENSION IS MAX. HUB LENGTH ON SHAFT
- 4) CONDUIT BOX CAN BE ROTATED IN 90° STEPS ON ITS OWN AXIS.
- 5) TOTAL WEIGHT OF MOTOR.
- 6) ALL DIMENSIONS NOT NOTED ARE NOMINAL DIMENSIONS CONSULT FACTORY FOR TOLERANCES.

FOR F1 OR F2 CONDUIT BOX LOCATION SEE SALES ORDER

DESIGNER CSL 7-19-91	BALDOR		
ENGINEER RFL 7-19-91			
ENGINEER DAG 7-19-91			
TITLE: DIMENSION SHEET DPFG, STD AT			
MANUF. RWT 7-19-91	PART NUMBER 875	DWG. SIZE A	REV. A

A	19032	REDRAWN	CSL	7-19-1991
REV.	ECO.	DESCRIPTION	BY	DATE