



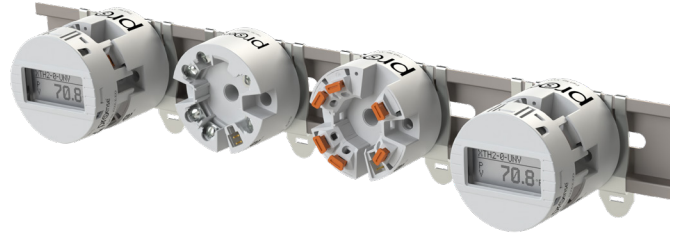
Head Mounted Universal Temperature Transmitters - Programmable Accessories

The **XTH2-UNV-DISP** is a convenient, easy to use display accessory for the XTH2 temperature transmitters. Simply clip the display on the XTH2 transmitter to get a digital readout of the transmitter scaled output. Transmitter configuration parameters are automatically read by the XTH2-UNV-DISP, so no additional configuration is required. A DIP switch setting is available to rotate the display reading 180 degrees.

The **XTH2-ENC-F** is a rugged aluminum NEMA 4X, IP66/68 rated field mount housing for the XTH2 temperature transmitters. The housing is designed to accommodate both the XTH2 transmitter and the XTH2-UNV-DISP, and includes a window to view the display reading from outside the housing. Two 1/2" female NPT ports are available for wiring access. The XTH2-ENC-F can be wall mounted using the XTH2-ENC-BKT1 wall mount bracket or pipe mounted using the XTH2-ENC-BKT2 pipe mount bracket.

The **XTH2-ENC-P** is a rugged aluminum NEMA 4X, IP66/68 rated probe connection head housing for the XTH2 temperature transmitters. The housing is designed to accommodate both the XTH2 transmitter and the XTH2-UNV-DISP, and includes a window to view the display reading from outside the housing. One 1/2" female NPT port is available for a temperature probe and another 1/2" female NPT port for wiring access.

For a low cost DIN rail mounted temperature transmitter with or without a display, the DN-CLIP-FM4-5 DIN rail clip can be used with the XTH2 transmitter and XTH2-UNV-DISP. Use the mounting hardware provided with the XTH2 temperature transmitter to attach two DN-CLIP-FM4-5 clips to the XTH2 transmitter and secure the assembly to DIN rail in a panel as shown in the image below.



Temperature transmitter, display, DIN rail, and DIN rail clips purchased separately.



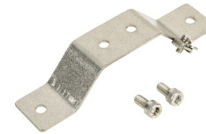
XTH2-ENC-F



XTH2-ENC-P



XTH2-UNV-DISP



XTH2-ENC-BKT1



XTH2-ENC-BKT2

Note: Purchase XTH2-UNV-DISP separately

| Head Mounted Universal Temperature Transmitters - Programmable Accessories | | | | | |
|--|---|---------|---------|---------------------|---------|
| Part No. | Description | Pcs/Pkg | Wt (lb) | Drawing Link | Price |
| XTH2-UNV-DISP | ProSense display, polycarbonate. For use with programmable temperature transmitter XTH2-0-UNV-S and XTH2-0-UNV-P. | 1 | 0.10 | PDF | \$75.00 |
| XTH2-ENC-F | ProSense field housing, (2) 1/2in female NPT, -40 to +212 degrees F (-40 to 100 degrees C), aluminum, NEMA 4X, IP66 IP68. For use with programmable temperature transmitter XTH2-0-UNV-S and XTH2-0-UNV-P. | 1 | 1.65 | PDF | \$60.00 |
| XTH2-ENC-P | ProSense connection head, 1/2in female NPT probe connection, 1/2in female NPT, -40 to +212 degrees F (-40 to 100 degrees C), aluminum, NEMA 4X, IP66 IP68. For use with programmable temperature transmitter XTH2-0-UNV-S and XTH2-0-UNV-P. | 1 | 1.65 | PDF | \$60.00 |
| XTH2-ENC-BKT1 | ProSense wall mount bracket, 316L stainless steel. For use with field housing XTH2-ENC-F. Mounting hardware included. | 1 | 0.22 | PDF | \$21.00 |
| XTH2-ENC-BKT2 | ProSense pipe mount bracket, 316L stainless steel. For use with field housing XTH2-ENC-F. Mounting hardware included. | 1 | 0.60 | PDF | \$41.00 |