

# proSense® Thermocouple and RTD Connectors

## Overview

- Glass-filled high quality thermoplastic body with original thermocouple material pins and spring-loaded inserts
- Polarized pins
- Molded barriers prevent short circuit
- Captive central cover screw for easy assembly
- Easy wire connection pressure plate
- construction
- Stainless steel screws with combination head (Slotted and Phillips)
- 3-pin standard connectors have a third pin for ground or continuous shield, or for 3-wire RTDs

Thermocouple and RTD Connectors									
Part Number	Pcs/ Pkg	Wt(lb)	Price	Sensor Type	Connector Type	Temperature Rating	Body Color	Wire Size	Wire Cable Clamp Bracket
<a href="#">THMJ-SP</a>	1	0.5	\$4.00	J	Standard round pin plug	Max continuous 400°F (200°C)	Black	32 AWG (0.2 mm) to 14 AWG maximum (2.0 mm)	WCB-S
<a href="#">THMJ-SJ</a>	1	0.5	\$5.25		Standard round pin jack				-
<a href="#">THMJ-SPJ</a>	1	0.5	\$10.00		Standard round direct mount jack			40 AWG (0.08 mm) to 20 AWG maximum (0.8 mm)	WCB-M
<a href="#">THMJ-MP</a>	1	0.5	\$3.75		Miniature flat pin plug				-
<a href="#">THMJ-MJ</a>	1	0.5	\$4.25		Miniature flat pin jack				-
<a href="#">THMJ-MPJ</a>	1	0.5	\$6.75		Miniature round direct mount jack				-
<a href="#">THMK-SP</a>	1	0.5	\$4.50	K	Standard round pin plug	Max continuous 662°F (350°C)	Yellow	32 AWG (0.2 mm) to 14 AWG maximum (2.0 mm)	WCB-S
<a href="#">THMK-SJ</a>	1	0.5	\$5.50		Standard round pin jack				-
<a href="#">THMK-SPJ</a>	1	0.5	\$10.00		Standard round direct mount jack			40 AWG (0.08 mm) to 20 AWG maximum (0.8 mm)	WCB-M
<a href="#">THMK-MP</a>	1	0.5	\$4.00		Miniature flat pin plug				-
<a href="#">THMK-MJ</a>	1	0.5	\$4.25		Miniature flat pin jack				-
<a href="#">THMK-MPJ</a>	1	0.5	\$7.50		Miniature round direct mount jack				-
<a href="#">THMK-HSP</a>	1	0.5	\$13.00	RTD	Standard hi-temp round pin plug	Max continuous 662°F (350°C)	Brown	32 AWG (0.2 mm) to 14 AWG maximum (2.0 mm)	WCB-S
<a href="#">THMK-HSJ</a>	1	0.5	\$15.00		Standard hi-temp round pin jack				-
<a href="#">THMT-SP</a>	1	0.5	\$4.25	T	Standard round pin plug	Max continuous 400°F (200°C)	Blue	32 AWG (0.2 mm) to 14 AWG maximum (2.0 mm)	-
<a href="#">THMT-SJ</a>	1	0.5	\$5.75		Standard round pin jack				-
<a href="#">THMT-SPJ</a>	1	0.5	\$9.50		Standard round direct mount jack			40 AWG (0.08 mm) to 20 AWG maximum (0.8 mm)	WCB-M
<a href="#">THMT-MP</a>	1	0.5	\$4.00		Miniature flat pin plug				-
<a href="#">THMT-MJ</a>	1	0.5	\$4.50		Miniature flat pin jack				-
<a href="#">THMT-MPJ</a>	1	0.5	\$8.00		Miniature round direct mount jack				-
<a href="#">RTD-SP</a>	1	0.5	\$9.00	RTD	Standard round pin plug	Max continuous 400°F (200°C)	White	32 AWG (0.2 mm) to 14 AWG maximum (2.0 mm)	WCB-S
<a href="#">RTD-SJ</a>	1	0.5	\$11.50		Standard round pin jack				-

[THMT-SP](#)



[THMT-SJ](#)



[THMK-SP](#)



[THMK-SJ](#)



[THMK-MP](#)



[THMJ-MJ](#)



[THMT-SPJ](#)



[THMT-MPJ](#)



[RTD-SP](#)



[RTD-SJ](#)



[THMK-HSP](#)



[THMK-HSJ](#)

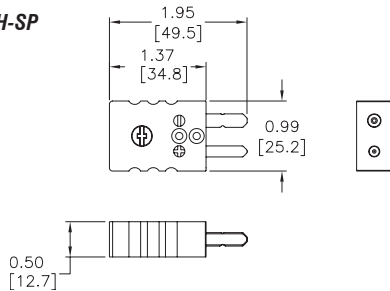


# proense® Thermocouple and RTD Connectors

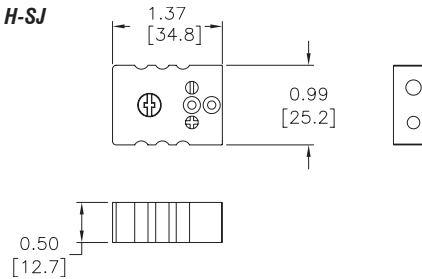
## Dimensions

inches [mm]

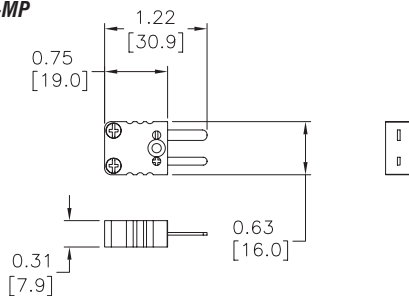
**THMJ, K, T, & H-SP**



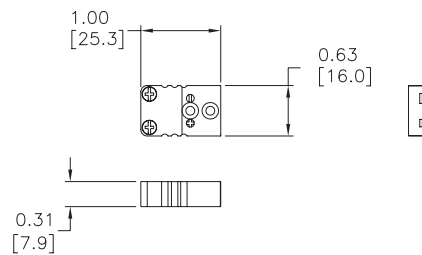
**THMJ, K, T, & H-SJ**



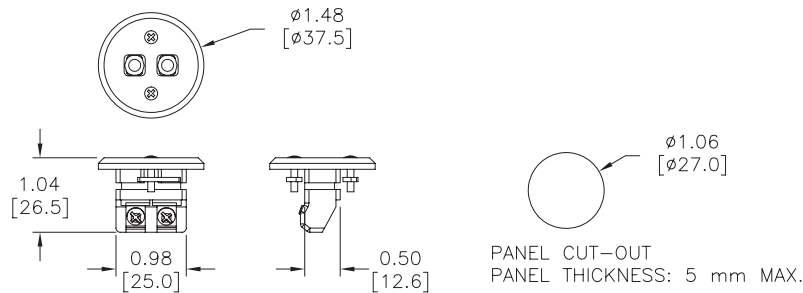
**THMJ, K, & T-MP**



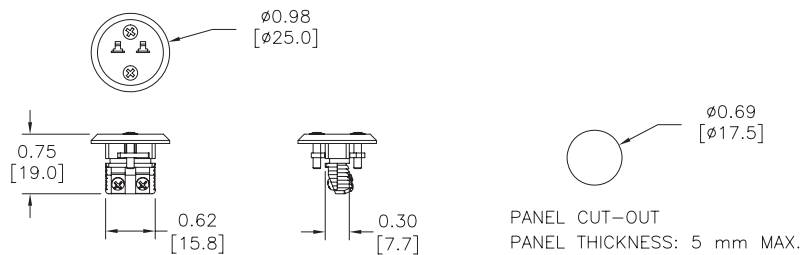
**THMJ, K, & T-MJ**



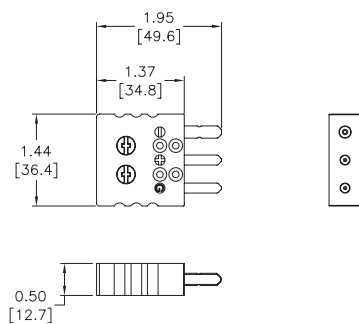
**THMJ, K, & T-SPJ**



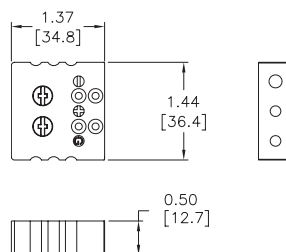
**THMJ, K, & T-MPJ**



**RTD-SP**



**RTD-SJ**



# pro<sup>ense</sup>® Thermocouple and RTD Connectors

**WCB-S**



**WCB-M**



**WCB-S Application**



**WCB-M Application**

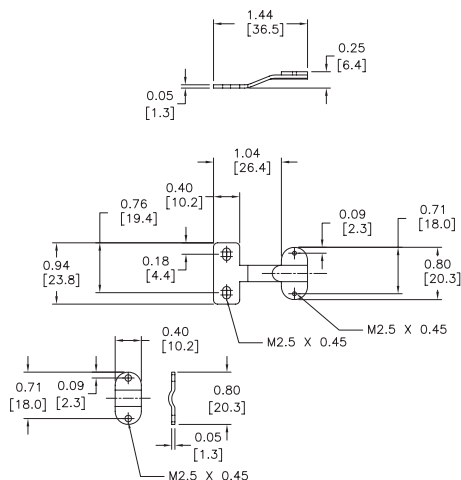


Thermocouple and RTD Connectors Accessories				
Part Number	Pcs/ Pkg	Wt(lb)	Price	Description
WCB-S	4	0.5	\$7.00	Wire / cable clamp bracket for use with standard thermocouple and RTD connectors.
WCB-M	4	0.5	\$6.75	Wire / cable clamp bracket for use with miniature thermocouple connectors.

## Dimensions

inches [mm]

**WCB-S**



**WCB-M**

