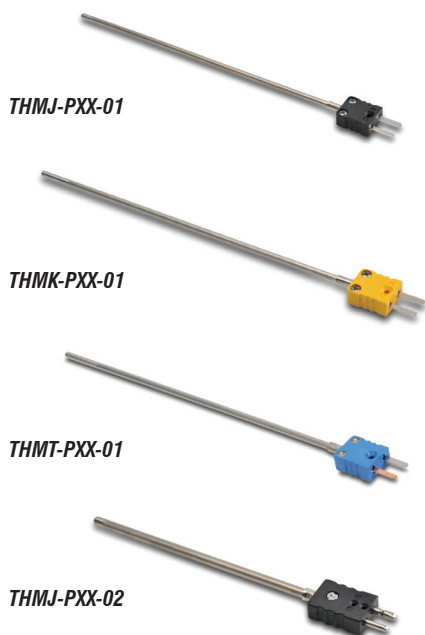


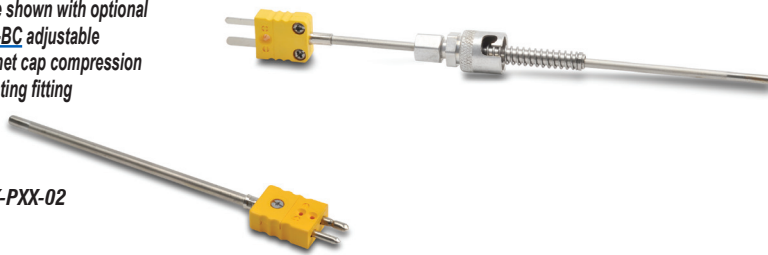
# ProSense® Thermocouple Probes with Attached Plug



## Overview


- Type J, K, or T thermocouple elements to meet many temperature sensing applications
- 1/8" or 1/4" diameter, 316 SS sheath to protect against harsh environments
- Magnesium Oxide (MgO) insulation provides vibration dampening and protection against thermal shock
- 6", 12" or 18" probe length
- Bendable probe to adapt to installation requirements
- Attached plug for quick and easy wiring connections
- Made in the USA

Probe shown with optional CF18-BC adjustable bayonet cap compression mounting fitting



Thermocouple Probes with Attached Plug - Types J, K & T										
Part Number	Pcs/Pkg	Wt (lb)	Price	Type	Probe Diameter (O.D.)	Probe Length	Temperature Sensing Range	Mounting	Attached Plug Size	Mating Jack (see accessories-purchased separately)
<a href="#">THMJ-P06-01</a>	1	0.2	\$24.50	J	1/8"	6"	0 to 521°C (32 to 970°F), plug rated to 400 °F (204 °C)	ProSense compression fitting (see accessories purchased separately)	Miniature	THMJ-MJ
<a href="#">THMJ-P12-01</a>			\$25.50	J		12"				
<a href="#">THMJ-P18-01</a>			\$29.00	J		18"				
<a href="#">THMK-P06-01</a>			\$24.50	K		6"	0 to 927°C (32 to 1700°F) plug rated to 400 °F (204 °C)			THMK-MJ
<a href="#">THMK-P12-01</a>			\$25.50	K		12"				
<a href="#">THMK-P18-01</a>			\$29.00	K		18"				
<a href="#">THMT-P06-01</a>			\$23.50	T		6"	-200 to 371°C (-328 to 700°F) plug rated to 400 °F (204 °C)			THMT-MJ
<a href="#">THMT-P12-01</a>			\$24.50	T		12"				
<a href="#">THMT-P18-01</a>			\$27.50	T		18"				
<a href="#">THMJ-P06-02</a>			\$29.50	J	6"	1/4"	0 to 720°C (32 to 1330°F) plug rated to 400 °F (204 °C)		Standard	THMJ-SJ
<a href="#">THMJ-P12-02</a>			\$32.00	J	12"					
<a href="#">THMJ-P18-02</a>			\$38.00	J	18"					
<a href="#">THMK-P06-02</a>			\$29.50	K	6"		0 to 927°C (32 to 1700°F) plug rated to 400 °F (204 °C)		THMK-SJ	
<a href="#">THMK-P12-02</a>			\$32.00	K	12"					
<a href="#">THMK-P18-02</a>			\$38.00	K	18"					

Technical Specifications	
Junction Type	Ungrounded
ASTM E230 Standard Limits of Error	Types J, K: ± 2.2°C (± 4.0°F); Type T: ± 1°C (± 1.8°F); or 0.75% whichever is greater
Probe	ø1/8" or ø1/4", 316 stainless steel sheath, single thermocouple element is embedded in MgO powder
Probe Minimum Bend Radius	2 x sheath diameter
Minimum Installation Depth	1/8" O.D.: 1.75" (44.5 mm), 1/4" O.D.: 3" (76 mm)
Response Time	2.9 seconds, 63.2% of a 25-77°C step change per method ASTM E839
Wiring	Attached plug, mating jack sold separately. See accessories.

 Note: Check the chemical compatibility of the sensor's wetted parts with the medium to be measured.

# proSense® Thermocouple Probes with Attached Plug

## Dimensions

inches [mm]

THMJ, K & T - PXX-01

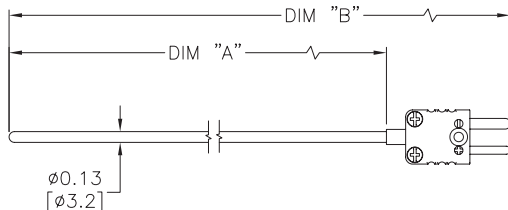
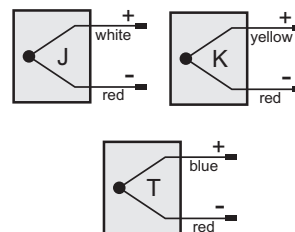


TABLE A		
PART NUMBER	DIM "A"	DIM "B"
THMJ-P06-01	6.00[152.4]	7.61[193.3]
THMJ-P12-01	12.00[304.8]	13.61[345.7]
THMJ-P18-01	18.00[457.2]	19.61[498.1]
THMK-P06-01	6.00[152.4]	7.61[193.3]
THMK-P12-01	12.00[304.8]	13.61[345.7]
THMK-P18-01	18.00[457.2]	19.61[498.1]
THMT-P06-01	6.00[152.4]	7.61[193.3]
THMT-P12-01	12.00[304.8]	13.61[345.7]
THMT-P18-01	18.00[457.2]	19.61[498.1]

## Wiring Information

**Type J: black plug**  
**Type K: yellow plug**  
**Type T: blue plug**  
**Pins labeled + and -**

- Must use with mating jack and thermocouple extension lead wire
- Observe polarity when making connections
- Do not use standard wire nuts



## Dimensions

inches [mm]

THMJ & K - PXX-02

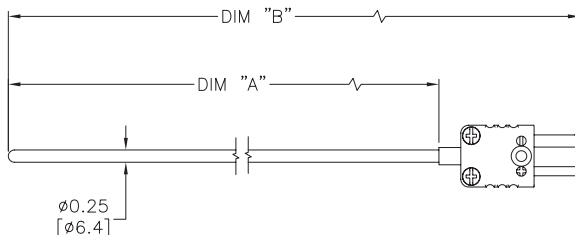


TABLE A		
PART NUMBER	DIM "A"	DIM "B"
THMJ-P06-02	6.00[152.4]	8.36[212.3]
THMJ-P12-02	12.00[304.8]	14.36[364.7]
THMJ-P18-02	18.00[457.2]	20.39[517.14]
THMK-P06-02	6.00[152.4]	8.36[212.3]
THMK-P12-02	12.00[304.8]	14.36[364.7]
THMK-P18-02	18.00[457.2]	20.39[517.14]

## Wiring Information

**Type J: black plug**  
**Type K: yellow plug**  
**Pins labeled + and -**

- Must use with mating jack and thermocouple extension lead wire
- Observe polarity when making connections
- Do not use standard wire nuts



# pro<sup>sense</sup> Thermocouple Probes with Attached Plug - Accessories

## Accessories

Part No.	Description	Pcs/Pkg	Price
<a href="#"><u>BCF18-125N</u></a>	Compression fitting, brass, for 1/8 inch diameter temperature probes, 1/8 inch NPT male thread	1	\$3.25
<a href="#"><u>BCF14-125N</u></a>	Compression fitting, brass, for 1/4 inch diameter temperature probes, 1/8 inch NPT male thread	1	\$3.25
<a href="#"><u>BCF18-25N</u></a>	Compression fitting, brass, for 1/8 inch diameter temperature probes, 1/4 inch NPT male thread	1	\$4.25
<a href="#"><u>BCF14-25N</u></a>	Compression fitting, brass, for 1/4 inch diameter temperature probes, 1/4 inch NPT male thread	1	\$4.25
<a href="#"><u>BCF18-50N</u></a>	Compression fitting, brass, for 1/8 inch diameter temperature probes, 1/2 inch NPT male thread	1	\$6.00
<a href="#"><u>BCF14-50N</u></a>	Compression fitting, brass, for 1/4 inch diameter temperature probes, 1/2 inch NPT male thread	1	\$6.50
<a href="#"><u>CF18-125N</u></a>	Compression fitting, 316 stainless steel, for 1/8 inch diameter temperature probes, 1/8 inch NPT male thread	1	\$8.00
<a href="#"><u>CF14-125N</u></a>	Compression fitting, 316 stainless steel, for 1/4 inch diameter temperature probes, 1/8 inch NPT male thread	1	\$8.00
<a href="#"><u>CF18-25N</u></a>	Compression fitting, 316 stainless steel, for 1/8 inch diameter temperature probes, 1/4 inch NPT male thread	1	\$9.25
<a href="#"><u>CF14-25N</u></a>	Compression fitting, 316 stainless steel, for 1/4 inch diameter temperature probes, 1/4 inch NPT male thread	1	\$9.25
<a href="#"><u>CF18-50N</u></a>	Compression fitting, 316 stainless steel, for 1/8 inch diameter temperature probes, 1/2 inch NPT male thread	1	\$13.50
<a href="#"><u>CF14-50N</u></a>	Compression fitting, 316 stainless steel, for 1/4 inch diameter temperature probes, 1/2 inch NPT male thread	1	\$14.00
<a href="#"><u>CFTF-18</u></a>	Teflon ferrule for brass or stainless steel compression fittings and 1/8 inch diameter temperature probes	5	\$7.25
<a href="#"><u>CFTF-14</u></a>	Teflon ferrule for brass or stainless steel compression fittings and 1/4 inch diameter temperature probes	5	\$7.75
<a href="#"><u>CF18-BC</u></a>	Adjustable bayonet cap compression fitting for 1/8 inch diameter probe sheaths	1	\$10.00
<a href="#"><u>THMJ-SJ</u></a>	Thermocouple connector, Type J, standard round pin jack, maximum continuous temperature 400°F (200°C), glass filled thermoplastic black body, thermocouple material pins, 14 AWG maximum (2.0 mm) wire size	1	\$5.25
<a href="#"><u>THMK-SJ</u></a>	Thermocouple connector, Type K, standard round pin jack, maximum continuous temperature 400°F (200°C), glass filled thermoplastic yellow body, thermocouple material pins, 14 AWG maximum (2.0 mm) wire size	1	\$5.50
<a href="#"><u>THMT-SJ</u></a>	Thermocouple connector, Type T, standard round pin jack, maximum continuous temperature 400°F (200°C), glass filled thermoplastic blue body, thermocouple material pins, 14 AWG (2.0 mm) maximum wire size	1	\$5.75
<a href="#"><u>THMJ-MJ</u></a>	Thermocouple connector, Type J, miniature flat pin jack, maximum continuous temperature 400°F (200°C), glass filled thermoplastic black body, thermocouple material pins, 20 AWG maximum (0.8 mm) wire size	1	\$4.25
<a href="#"><u>THMK-MJ</u></a>	Thermocouple connector, Type K, miniature flat pin jack, maximum continuous temperature 400°F (200°C), glass filled thermoplastic yellow body, thermocouple material pins, 20 AWG maximum (0.8 mm) wire size	1	\$4.25
<a href="#"><u>THMT-MJ</u></a>	Thermocouple connector, Type T, miniature flat pin jack, maximum continuous temperature 400°F (200°C), glass filled thermoplastic blue body, thermocouple material pins, 20 AWG (0.8 mm) maximum wire size	1	\$4.50
<a href="#"><u>THMJ-SPJ</u></a>	Thermocouple connector, Type J, standard round pin panel jack, maximum continuous temperature 400°F (200°C), glass filled thermoplastic black body, thermocouple material pins, 14 AWG (2.0 mm) maximum wire size	1	\$10.00
<a href="#"><u>THMK-SPJ</u></a>	Thermocouple connector, Type K, standard round pin panel jack, maximum continuous temperature 400°F (200°C), glass filled thermoplastic yellow body, thermocouple material pins, 14 AWG (2.0 mm) maximum wire size	1	\$10.00
<a href="#"><u>THMT-SPJ</u></a>	Thermocouple connector, Type T, standard round pin panel jack, maximum continuous temperature 400°F (200°C), glass filled thermoplastic blue body, thermocouple material pins, 14 AWG (2.0 mm) maximum wire size	1	\$9.50
<a href="#"><u>THMJ-MPJ</u></a>	Thermocouple connector, Type J, miniature flat pin panel jack, maximum continuous temperature 400°F (200°C), glass filled thermoplastic black body, thermocouple material pins, 14 AWG (2.0 mm) maximum wire size	1	\$6.75
<a href="#"><u>THMK-MPJ</u></a>	Thermocouple connector, Type K, miniature flat pin panel jack, maximum continuous temperature 400°F (200°C), glass filled thermoplastic yellow body, thermocouple material pins, 14 AWG (2.0 mm) maximum wire size	1	\$7.50
<a href="#"><u>THMT-MPJ</u></a>	Thermocouple connector, Type T, miniature flat pin panel jack, maximum continuous temperature 400°F (200°C), glass filled thermoplastic blue body, thermocouple material pins, 14 AWG (2.0 mm) maximum wire size	1	\$8.00
<a href="#"><u>WCB-S</u></a>	Wire / cable clamp bracket for use with standard thermocouple and RTD connectors	4	\$7.00
<a href="#"><u>WCB-M</u></a>	Wire / cable clamp bracket for use with miniature thermocouple connectors	4	\$6.75

Note: Thermocouple extension lead wire available at [www.automationdirect.com](http://www.automationdirect.com).  
See end of section for full listing of accessories and dimension information.

## Thermocouple Connectors

### [THMJ-SJ](#)



### [THMJ-SP](#)



### [THMJ-SPJ](#)



## S.S. Compression Fittings

### [CF18-125N](#)



### [CF14-125N](#)



### [CF14-25N](#)



### [CFTF-14](#)



# pro<sup>sense</sup>® Compression Mounting Fittings for Temperature Probes

Compression Mounting Fittings for Temperature Probes				
Part Number	Description	Pcs/Pkg	Wt(lb)	Price
<b>BCF18-125N</b>	Compression fitting, brass, for 1/8 inch diameter temperature probes, 1/8 inch NPT male thread	1	0.5	\$3.25
<b>BCF14-125N</b>	Compression fitting, brass, for 1/4 inch diameter temperature probes, 1/8 inch NPT male thread	1	0.5	\$3.25
<b>BCF18-25N</b>	Compression fitting, brass, for 1/8 inch diameter temperature probes, 1/4 inch NPT male thread	1	0.5	\$4.25
<b>BCF14-25N</b>	Compression fitting, brass, for 1/4 inch diameter temperature probes, 1/4 inch NPT male thread	1	0.5	\$4.25
<b>BCF18-50N</b>	Compression fitting, brass, for 1/8 inch diameter temperature probes, 1/2 inch NPT male thread	1	0.5	\$6.00
<b>BCF14-50N</b>	Compression fitting, brass, for 1/4 inch diameter temperature probes, 1/2 inch NPT male thread	1	0.5	\$6.50
<b>CF18-125N</b>	Compression fitting, 316 stainless steel, for 1/8 inch diameter temperature probes, 1/8 inch NPT male thread	1	0.5	\$8.00
<b>CF14-125N</b>	Compression fitting, 316 stainless steel, for 1/4 inch diameter temperature probes, 1/8 inch NPT male thread	1	0.5	\$8.00
<b>CF18-25N</b>	Compression fitting, 316 stainless steel, for 1/8 inch diameter temperature probes, 1/4 inch NPT male thread	1	0.5	\$9.25
<b>CF14-25N</b>	Compression fitting, 316 stainless steel, for 1/4 inch diameter temperature probes, 1/4 inch NPT male thread	1	0.5	\$9.25
<b>CF18-50N</b>	Compression fitting, 316 stainless steel, for 1/8 inch diameter temperature probes, 1/2 inch NPT male thread	1	0.5	\$13.50
<b>CF14-50N</b>	Compression fitting, 316 stainless steel, for 1/4 inch diameter temperature probes, 1/2 inch NPT male thread	1	0.5	\$14.00
<b>CFTF-18</b>	Teflon™ ferrule for brass or stainless steel compression fittings and 1/8 diameter temperature probes	5	0.5	\$7.25
<b>CFTF-14</b>	Teflon ferrule for brass or stainless steel compression fittings and 1/4 diameter temperature probes	5	0.5	\$7.75
<b>CF06-25N</b>	1/4 NPT stainless steel compression fitting for 0.24 inch (6 mm) diameter RTD probe with M12 connector.	1	0.18	\$28.50
<b>CF10-50N</b>	1/2 NPT stainless steel compression fitting for 10 mm (0.4 inch) diameter RTD probe with M12 connector.	1	0.20	\$30.00
<b>CF18-BC</b>	Bayonet compression fitting, for 1/8" diameter probe sheath sensors	1	0.1	\$10.00
<b>BB125N-50N</b>	Reducing bushing, brass, 1/2 MNPT x 1/8 FNPT, hex head	1	0.1	\$5.75

**BCF18-125N**



**BCF18-25N**




**BCF18-50N**



**BB125N-50N**



 *Note: Check the chemical compatibility of the sensor's wetted parts with the medium to be measured.*

*\*Working pressure of compression fitting should not exceed 500 psi. However we recommend any pressure application use a thermowell*

**CF14-125N**



**CF14-50N**



**CF14-25N**



**CF18-BC**



**CF06-25N**



**CF10-50N**



**CFTF-14**



**CFTF-18**



# pro<sup>sense</sup>® Compression Mounting Fittings for Temperature Probes

**BCF14-125N**



**BCF14-25N**



**BCF14-50N**



**CF18-25N**



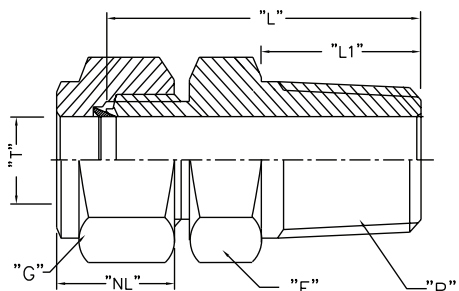
**CF18-50N**



**CF18-125N**



## Dimensions



Note: All threaded connections should be hand tightened and then turned 1 to 2 full turns for proper sealing.

Actual torque required for a proper seal of NPT threads is influenced by tolerance, sealant, lubricant, etc.

ProSense Compression Fittings									
Part No.	Weight (lb)	Description	"T" Tube O.D.	"P" NPT(M)	"L" Body Length*	"L1" Thread Length**	"F" Body Hex**	"G" Nut Hex**	"NL" Nut Length**
<b>BCF18-125N/CF18-125N</b>	0.5	1/8" OD x 1/8" NPT(M)	0.128/0.132	1/8" NPT(M)	0.909"	0.393"	0.5"	0.433"	0.492"
<b>BCF14-125N/CF14-125N</b>	0.5	1/4" OD x 1/8" NPT(M)	0.253/0.257	1/8" NPT(M)	1.0"	0.393"	0.5"	0.559"	0.5"
<b>BCF18-25N/CF18-25N</b>	0.5	1/8" OD x 1/4" NPT(M)	0.128/0.132	1/4" NPT(M)	1.114"	0.551"	0.551"	0.433"	0.492"
<b>BCF14-25N/CF14-25N</b>	0.5	1/4" OD x 1/4" NPT(M)	0.253/0.257	1/4" NPT(M)	1.188"	0.551"	0.551"	0.559"	0.5"
<b>BCF18-50N/CF18-50N</b>	0.5	1/8" OD x 1/2" NPT(M)	0.128/0.132	1/2" NPT(M)	1.377"	0.748"	0.866"	0.433"	0.492"
<b>BCF14-50N/CF14-50N</b>	0.5	1/4" OD x 1/2" NPT(M)	0.253/0.257	1/2" NPT(M)	1.437"	0.748"	0.866"	0.559"	0.5"
<b>CF06-25N</b>	0.18	6 mm OD x 1/4" NPT(M)	0.236/0.240	1/4" NPT(M)	1.174"	0.59"	0.67"	0.55"	0.587"
<b>CF10-50N</b>	0.20	10 mm OD x 1/2" NPT(M)	0.394/0.399	1/2" NPT(M)	1.458"	0.55"	1.06"	0.75"	0.608"

Note: All dimensions are in inches

\* w 0.07

\*\* w 0.03

Note: Once the compression fitting has been fully tightened on the probe, the ferrule will be locked onto the probe and cannot be removed or reused.

\*Working pressure of compression fitting should not exceed 500 psi. However we recommend any pressure application use a thermowell



Scan the QR Code or click to view the CF06 & CF10 Compression Fitting Installation Instructions



# Bayonet Mounting Adapter for Temperature Sensors

Bayonet Mounting Adapter for Temperature Sensors					
Part Number	Description	Material	Pcs/Pkg	Wt(lb)	Price
<a href="#"><u>BA-078</u></a>	Bayonet adapter, 7/8 inch long, 7/16 inch outside diameter, 9/32 inch inside diameter, 1/8 inch MNPT	Stainless Steel (304)	1	0.5	\$1.75
<a href="#"><u>BA-100</u></a>	Bayonet adapter, 1 inch long, 7/16 inch outside diameter, 9/32 inch inside diameter, 1/8 inch MNPT		1	0.5	\$1.75
<a href="#"><u>BA-114</u></a>	Bayonet adapter, 1-1/4 inch long, 7/16 inch outside diameter, 9/32 inch inside diameter, 1/8 inch MNPT		1	0.5	\$2.25
<a href="#"><u>BA-112</u></a>	Bayonet adapter, 1-1/2 inch long, 7/16 inch outside diameter, 9/32 inch inside diameter, 1/8 inch MNPT		1	0.5	\$2.25
<a href="#"><u>BA-200</u></a>	Bayonet adapter, 2 inch long, 7/16 inch outside diameter, 9/32 inch inside diameter, 1/8 inch MNPT		1	0.5	\$2.50
<a href="#"><u>BA-212</u></a>	Bayonet adapter, 2-1/2 inch long, 7/16 inch outside diameter, 9/32 inch inside diameter, 1/8 inch MNPT		1	0.5	\$2.75
<a href="#"><u>BA-300</u></a>	Bayonet adapter, 3 inch long, 7/16 inch outside diameter, 9/32 inch inside diameter, 1/8 inch MNPT		1	0.5	\$3.00
<a href="#"><u>BA-312</u></a>	Bayonet adapter, 3-1/2 inch long, 7/16 inch outside diameter, 9/32 inch inside diameter, 1/8 inch MNPT		1	0.5	\$3.50
<a href="#"><u>CF18-BC</u></a>	Adjustable bayonet compression fitting, for 1/8" diameter probe sheath sensors			1	0.1
<a href="#"><u>BB125N-50N</u></a>	Reducing bushing, 1/2 MNPT x 1/8 FNPT, hex head	Brass	1	0.1	\$5.75

[BA-078](#)



[BA-100](#)



[BA-114](#)



*Note: Check the chemical compatibility of the sensor's wetted parts with the medium to be measured.*

[CF18-BC](#)



[BA-300](#)



[BA-112](#)



[BB125N-50N](#)



[BA-312](#)



[BA-200](#)



[BA-212](#)

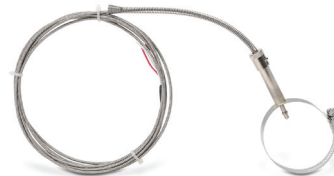


# ProSense® Pipe Clamp Adapters

**PCA-300**

## Overview

- For use with ProSense adjustable immersion thermocouple and RTD sensors
- Available in adjustable diameters from 11/16 to 7 inches
- Provides an easy means of sensing temperature on the outside of a pipe



Shown with optional adjustable immersion sensor

## Pipe Clamp Adapters for ProSense Adjustable Immersion Sensors

Part Number	Description	Pcs/ Pkg	Wt(lb)	Price
<b>PCA-125</b>	ProSense pipe clamp adapter, 11/16 to 1-1/4 inch adjustable diameter, 2-inch attached bayonet adapter with 7/16 inch outside diameter and 9/32 inch inside diameter. Use with ProSense adjustable immersion sensors.	1	0.1	\$17.50
<b>PCA-200</b>	ProSense pipe clamp adapter with 1-1/16 to 2 inch adjustable diameter, 2-inch attached bayonet adapter with 7/16 inch outside diameter and 9/32 inch inside diameter. Use with ProSense adjustable immersion sensors.	1	0.1	\$18.00
<b>PCA-300</b>	ProSense pipe clamp adapter with 2-1/16 to 3 inch adjustable diameter, 2-inch attached bayonet adapter with 7/16 inch outside diameter and 9/32 inch inside diameter. Use with ProSense adjustable immersion sensors.	1	0.1	\$20.00
<b>PCA-425</b>	ProSense pipe clamp adapter with 3-5/16 to 4-1/4 inch adjustable diameter, 2-inch attached bayonet adapter with 7/16 inch outside diameter and 9/32 inch inside diameter. Use with ProSense adjustable immersion sensors.	1	0.1	\$22.50
<b>PCA-500</b>	ProSense pipe clamp adapter with 4-1/8 to 7 inch adjustable diameter, 2-inch attached bayonet adapter with 7/16 inch outside diameter and 9/32 inch inside diameter. Use with ProSense adjustable immersion sensors.	1	0.1	\$21.00

## Dimensions

inches [mm]

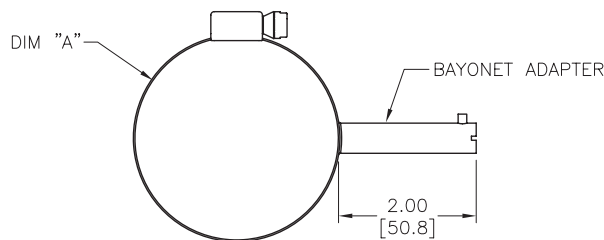


TABLE A

PART NUMBER	DIM "A"	FITS PIPE SIZES
PCA-125	ø0.68–1.25 [ø17.2–31.7]	1/2 TO 3/4 NPS
PCA-200	ø1.06–2.00 [ø26.9–50.8]	1 TO 1-1/2 NPS
PCA-300	ø2.06–3.00 [ø52.3–76.2]	2 TO 2-1/2 NPS
PCA-425	ø3.31–4.25 [ø84.1–108.0]	3 TO 3-1/2 NPS
PCA-500	ø4.12–7.00 [ø104.6–177.8]	4 TO 6 NPS

# proSense® Thermocouple and RTD Connectors

## Overview

- Glass-filled high quality thermoplastic body with original thermocouple material pins and spring-loaded inserts
- Polarized pins
- Molded barriers prevent short circuit
- Captive central cover screw for easy assembly
- Easy wire connection pressure plate
- construction
- Stainless steel screws with combination head (Slotted and Phillips)
- 3-pin standard connectors have a third pin for ground or continuous shield, or for 3-wire RTDs

Thermocouple and RTD Connectors									
Part Number	Pcs/ Pkg	Wt(lb)	Price	Sensor Type	Connector Type	Temperature Rating	Body Color	Wire Size	Wire Cable Clamp Bracket
<a href="#">THMJ-SP</a>	1	0.5	\$4.00	J	Standard round pin plug	Max continuous 400°F (200°C)	Black	32 AWG (0.2 mm) to 14 AWG maximum (2.0 mm)	WCB-S
<a href="#">THMJ-SJ</a>	1	0.5	\$5.25		Standard round pin jack				-
<a href="#">THMJ-SPJ</a>	1	0.5	\$10.00		Standard round direct mount jack			40 AWG (0.08 mm) to 20 AWG maximum (0.8 mm)	WCB-M
<a href="#">THMJ-MP</a>	1	0.5	\$3.75		Miniature flat pin plug				-
<a href="#">THMJ-MJ</a>	1	0.5	\$4.25		Miniature flat pin jack				-
<a href="#">THMJ-MPJ</a>	1	0.5	\$6.75		Miniature round direct mount jack				-
<a href="#">THMK-SP</a>	1	0.5	\$4.50	K	Standard round pin plug	Max continuous 662°F (350°C)	Yellow	32 AWG (0.2 mm) to 14 AWG maximum (2.0 mm)	WCB-S
<a href="#">THMK-SJ</a>	1	0.5	\$5.50		Standard round pin jack				-
<a href="#">THMK-SPJ</a>	1	0.5	\$10.00		Standard round direct mount jack			40 AWG (0.08 mm) to 20 AWG maximum (0.8 mm)	WCB-M
<a href="#">THMK-MP</a>	1	0.5	\$4.00		Miniature flat pin plug				-
<a href="#">THMK-MJ</a>	1	0.5	\$4.25		Miniature flat pin jack				-
<a href="#">THMK-MPJ</a>	1	0.5	\$7.50		Miniature round direct mount jack				-
<a href="#">THMK-HSP</a>	1	0.5	\$13.00	RTD	Standard hi-temp round pin plug	Max continuous 662°F (350°C)	Brown	32 AWG (0.2 mm) to 14 AWG maximum (2.0 mm)	WCB-S
<a href="#">THMK-HSJ</a>	1	0.5	\$15.00		Standard hi-temp round pin jack				-
<a href="#">THMT-SP</a>	1	0.5	\$4.25	T	Standard round pin plug	Max continuous 400°F (200°C)	Blue	32 AWG (0.2 mm) to 14 AWG maximum (2.0 mm)	-
<a href="#">THMT-SJ</a>	1	0.5	\$5.75		Standard round pin jack				-
<a href="#">THMT-SPJ</a>	1	0.5	\$9.50		Standard round direct mount jack			40 AWG (0.08 mm) to 20 AWG maximum (0.8 mm)	WCB-M
<a href="#">THMT-MP</a>	1	0.5	\$4.00		Miniature flat pin plug				-
<a href="#">THMT-MJ</a>	1	0.5	\$4.50		Miniature flat pin jack				-
<a href="#">THMT-MPJ</a>	1	0.5	\$8.00		Miniature round direct mount jack				-
<a href="#">RTD-SP</a>	1	0.5	\$9.00	RTD	Standard round pin plug	Max continuous 400°F (200°C)	White	32 AWG (0.2 mm) to 14 AWG maximum (2.0 mm)	WCB-S
<a href="#">RTD-SJ</a>	1	0.5	\$11.50		Standard round pin jack				-

[THMT-SP](#)



[THMT-SJ](#)



[THMK-SP](#)



[THMK-SJ](#)



[THMK-MP](#)



[THMJ-MJ](#)



[THMT-SPJ](#)



[THMT-MPJ](#)



[RTD-SP](#)



[RTD-SJ](#)



[THMK-HSP](#)



[THMK-HSJ](#)

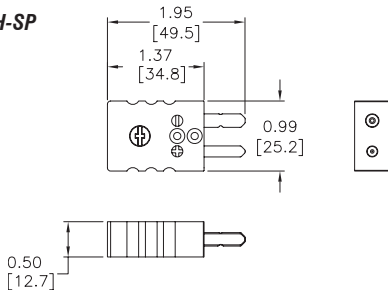


# pro<sup>ense</sup> Thermocouple and RTD Connectors

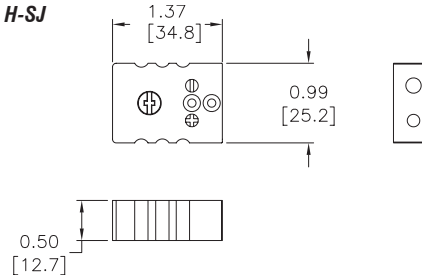
## Dimensions

inches [mm]

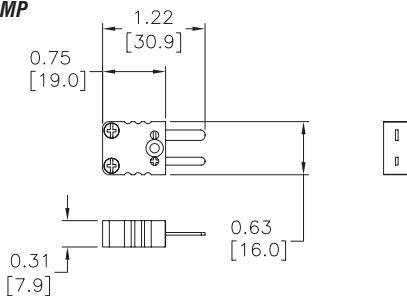
**THMJ, K, T, & H-SP**



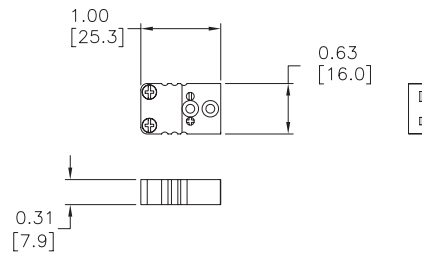
**THMJ, K, T, & H-SJ**



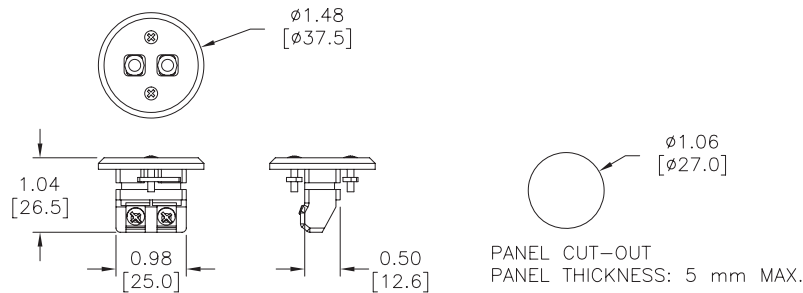
**THMJ, K, & T-MP**



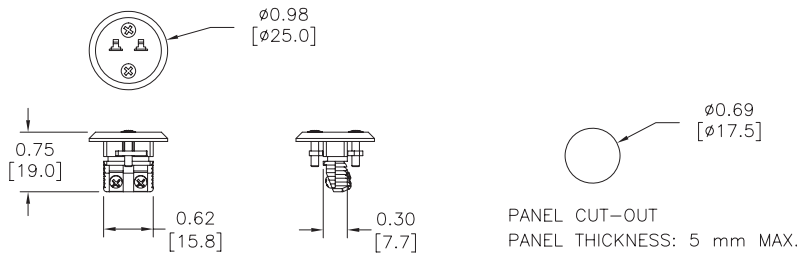
**THMJ, K, & T-MJ**



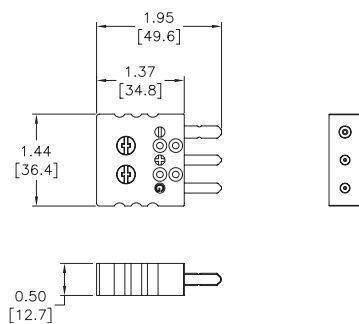
**THMJ, K, & T-SPJ**



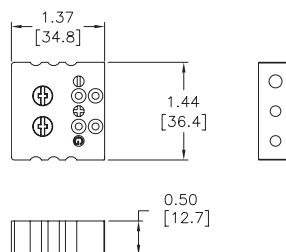
**THMJ, K, & T-MPJ**



**RTD-SP**



**RTD-SJ**



# pro<sup>ense</sup>® Thermocouple and RTD Connectors

**WCB-S**



**WCB-M**



**WCB-S Application**



**WCB-M Application**

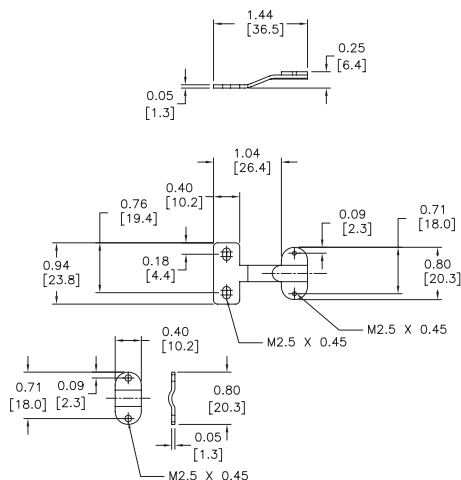


Thermocouple and RTD Connectors Accessories				
Part Number	Pcs/ Pkg	Wt(lb)	Price	Description
WCB-S	4	0.5	\$7.00	Wire / cable clamp bracket for use with standard thermocouple and RTD connectors.
WCB-M	4	0.5	\$6.75	Wire / cable clamp bracket for use with miniature thermocouple connectors.

## Dimensions

inches [mm]

**WCB-S**



**WCB-M**

