

# Powertite™ Series Pin and Sleeve Plugs, Connectors and Receptacles

## NEC/CEC:

Listed for Ordinary (Unclassified) Locations  
NEMA 3, 3R, 4, 4X

PLUGS AND RECEPTACLES: NEC/CEC ORDINARY LOCATION

APPLETON™

## Applications

- Designed to supply power to portable or fixed electrical equipment such as motor generator units, welders, pumps, compressors, cellular relay stations, and similar apparatus.
- Ideal for use on shipping docks, ports, and other "ship to shore" applications.
- Suitable for use in locations where a weatherproof enclosure is required.
- Rough usage construction.

## Features

- Available in 30, 60, 100, 150, 200, and 400 Amp units.
- Available in two grounding styles: Style 1 (shell only) and Style 2 (shell and extra pole).
- Neoprene bushing compressed by cable collar prevents entrance of water. Bushing is highly resistant to hydrocarbon deterioration and is self-extinguishing.
- Locking screw and slot prevents plug cable collar from "backing off."
- Contacts exert constant pressure along entire contact surface and provide electrical continuity.
- Ambient temperature range of -25°C to +40°C (-13°F to +104°F).
- Insulating blocks provide greatest dielectric and mechanical strength and lowest arc tracking.
- Positive polarization: only plugs and receptacles of same style, number of poles and ampere rating can be used together.
- Circuit breaking: in 30, 60, 100, 150 and 200 Amp units, any arcing created as line and load terminals disengage is safely confined deep within terminal cavities. Plugs may be withdrawn in an emergency under full rated loads without separate disconnect switches (400 Amp plug is for disconnecting use only; not for current rupturing).
- 30, 60, 100, and 150 Amp Powertite™ plugs also suitable for classified locations when used with Appleton EBR, EBRH, JBR, MD2SR, or DBR explosionproof interlocking receptacles.
- Controlled length contacts ensure that ground makes first and breaks last for added safety.
- Intermatability ②: Intermateable with Crouse-Hinds ⚡ Arktite® and Powermate™, and Killark ⚡ Versamate®.

## Standard Materials

- Plug, receptacle, connector and mounting box housings: copperfree (4/10 of 1% max.) aluminum
- Insulating blocks: glass filled polyester

## Standard Finishes

- Aluminum plug, receptacle, connector and mounting box housings: epoxy powder coat
- Insulating blocks and contacts: natural finish



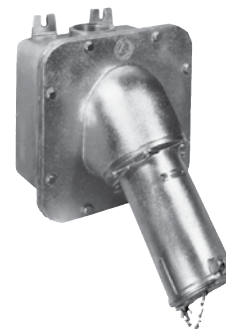
30 and 60 Amp



100 and 150 Amp



200 Amp



400 Amp

## Options

- See Illustrated Options

## NEC/CEC Certifications and Compliances

- UL Standard: UL 1682, UL 1686 ①, UL 50E
- UL Listed: E145916, E145917
- CSA Standard: C22.2 No. 182.1
- CSA Certified: 065179
- NEMA 4X (30, 60, 100, 150, and 200 Amp)
- NEMA Configuration: FB11

## Related Products

- For classified location plugs and receptacles, see *Plugs and Receptacles: Hazardous Location*.

① The UL 1686 standard is applicable to units up to 100 Amps.

② Classified by UL and Certified by CSA for use in specific combinations with Crouse-Hinds Arktite® or Killark Versamate®.

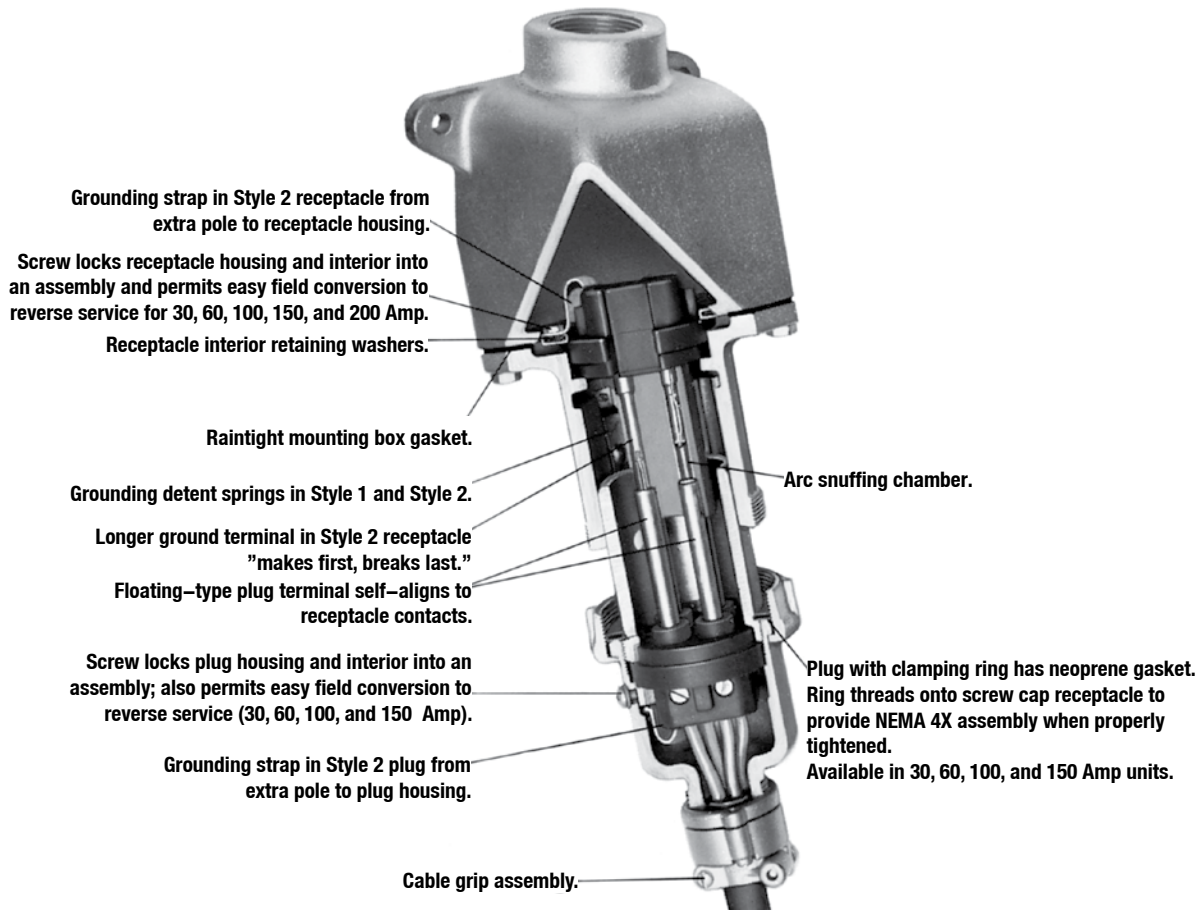
⚡ Arktite is a registered trademark of Cooper Crouse-Hinds.

⚡ Versamate is a registered trademark of Hubble Killark.

# Powerlite™ Series Pin and Sleeve Plugs, Connectors and Receptacles

NEC/CEC:  
Listed for Ordinary (Unclassified) Locations  
NEMA 3, 3R, 4, 4X

## Illustrated Features



PLUGS AND RECEPTACLES: NEC/CEC ORDINARY LOCATION

APPLETON™

# Aluminum Mounting Boxes

## For Powertite™ 30, 60, 100, and 150 Amp Receptacles

NEC/CEC:  
Listed for Ordinary (Unclassified) Locations  
NEMA 3, 3R, 4, 4X

PLUGS AND RECEPTACLES: NEC/CEC ORDINARY LOCATION

APPLETON™

### 30 Amp



| Hub Size (Inches) | AEE   | AERH   | AERC   | AERA   |
|-------------------|-------|--------|--------|--------|
| 1/2               | AEE13 | AERH13 | AERC13 | AERA13 |
| 3/4               | AEE23 | AERH23 | AERC23 | AERA23 |
| 1                 | AEE33 | AERH33 | AERC33 | AERA33 |

### 60 and 100 Amp



| Hub Size (Inches) | AEE   | AERH   | AERC   | AERA   |
|-------------------|-------|--------|--------|--------|
| 1                 | AEE36 | AERH36 | AERC36 | AERA36 |
| 1-1/4             | AEE46 | AERH46 | AERC46 | AERA46 |
| 1-1/2             | AEE56 | AERH56 | AERC56 | AERA56 |

### 60, 100, and 150 Amp



| Hub Size (Inches) | AJA Back Box and Adapter ① | Angle Adapter Only |
|-------------------|----------------------------|--------------------|
| 1                 | AJA310                     |                    |
| 1-1/4             | AJA410                     | AJA100             |
| 1-1/2             | AJA510                     |                    |
| 2                 | AJA610                     |                    |

### Replacement Receptacle Mounting Gasket

| Amp          | Back Box Type         | Part Number     |
|--------------|-----------------------|-----------------|
| 30           | AEE, AERH, AERC, AERA | PWRTITRECPGSKT1 |
| 60, 100      | AEE, AERH, AERC, AERA | PWRTITRECPGSKT2 |
| 60, 100, 150 | AJA                   | PWRTITRECPGSKT3 |

① Feed-Thru box furnished with one close-up plug in bottom recessed hub.