



AMETEK
LAMB ELECTRIC

Product Bulletin

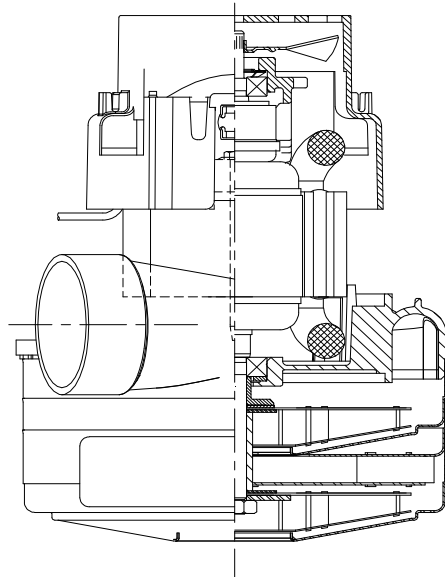
Model: 122685-00

DESCRIPTION

- Double stage
- 120 volts
- 5.7"/ 145 mm diameter
- Dual ball bearings
- Single speed
- Tangential bypass discharge
- Aluminum Fan End Bracket
- Plastic commutator bracket

DESIGN APPLICATION

- Equipment operating in environments requiring separation of working air from motor ventilating air
- Designed to handle clean, dry, filtered air only



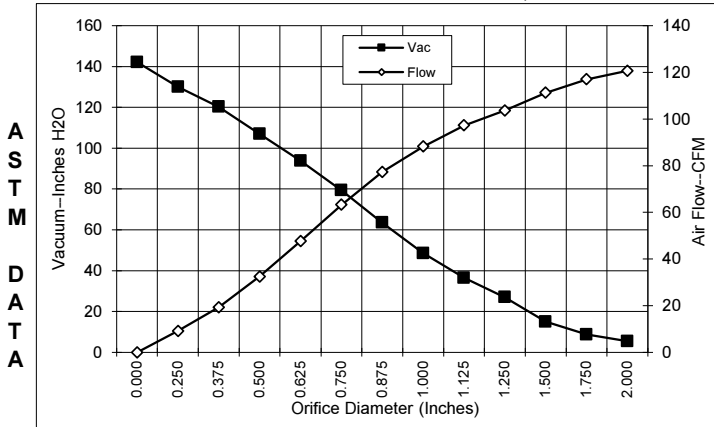
SPECIAL FEATURES

- Suitable for 120 volt AC operation, 50/60 Hz
- UL recognized, category PRGY2 (E47185)
- Provision for grounding
- Skeleton frame design
- Dual Tapered fan system
- The Lamb vacuum motor line offers a wide range of performance levels to meet design needs

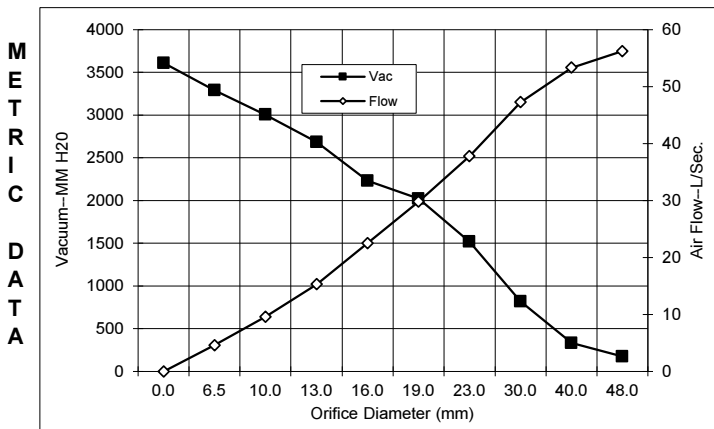


TYPICAL MOTOR PERFORMANCE.*

(At 120 volts, 60Hz, test data is corrected to standard conditions of 29.92 Hg, 68° F.)



Orifice (Inches)	Amps	Watts (In)	RPM	Vac (In.H2O)	Flow (CFM)	Air Watts
2.000	17.8	1992	23583.52	5.4	120.7	76
1.750	17.7	1989	23548.78	8.7	117.0	120
1.500	17.6	1980	23563.83	15.0	111.3	196
1.250	17.5	1971	23665.55	27.0	103.6	328
1.125	17.4	1953	23775.79	36.5	97.2	417
1.000	17.2	1934	23914.27	48.5	88.2	502
0.875	16.9	1904	24142.36	63.5	77.3	576
0.750	16.3	1840	24735.59	79.3	63.2	589
0.625	15.4	1740	25665.16	93.9	47.6	524
0.500	14.2	1620	26845.74	107.0	32.4	408
0.375	12.9	1476	28406.34	120.3	19.3	272
0.250	11.7	1345	29938.49	130.0	9.2	140
0.000	10.8	1248	31293.32	142.0	0.0	0



Orifice (mm)	Amps	Watts (In)	RPM	Vac (mm H2O)	Flow (L/Sec)	Air Watts
48.0	17.7	1991	23568	174	56.2	95
40.0	17.7	1982	23559	333	53.3	173
30.0	17.5	1961	23726	819	47.3	377
23.0	17.0	1911	24085	1517	37.8	515
19.0	16.3	1838	24754	2022	29.8	528
16.0	15.4	1744	25628	2230	22.5	470
13.0	14.3	1632	26728	2685	15.3	419
10.0	13.1	1498	28172	3004	9.6	292
6.5	11.8	1351	29862	3291	4.6	147
0.0	10.8	1248	31293	3608	0.0	0

Note: Metric performance data is calculated from the ASTM data above.

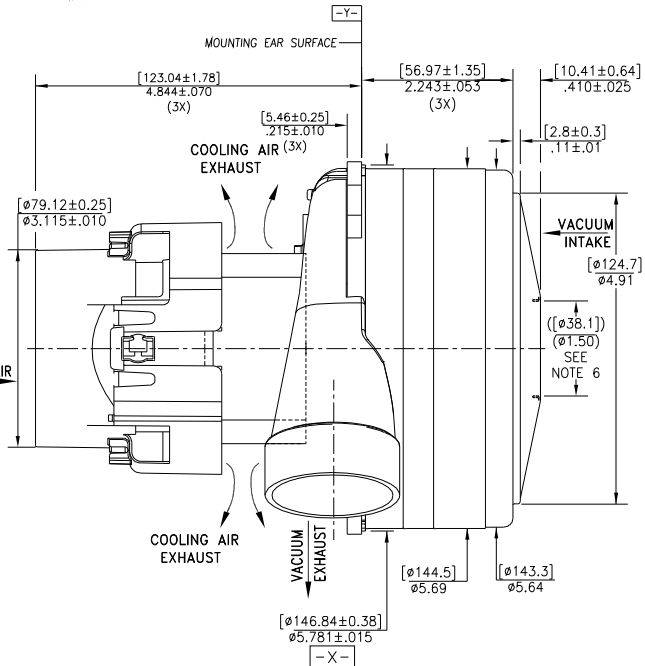
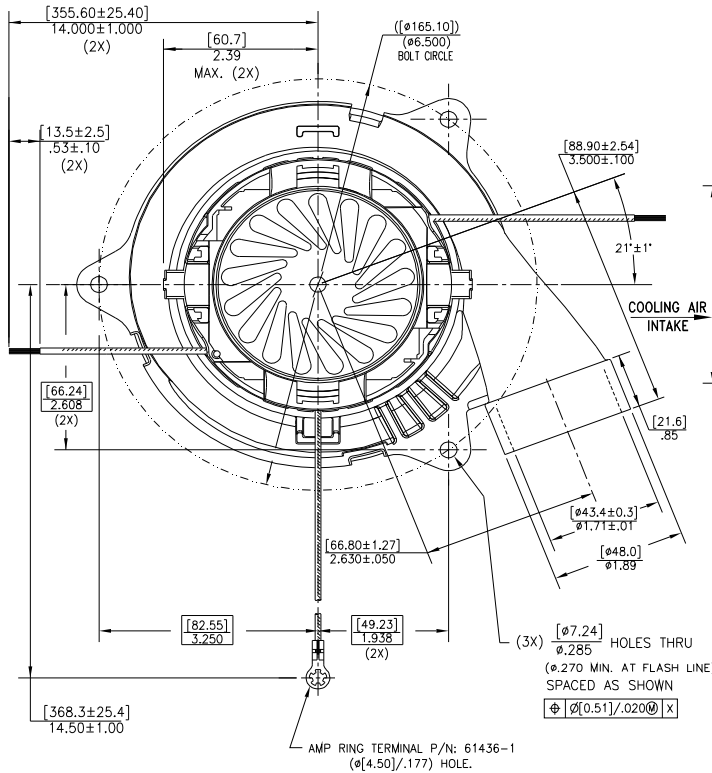
* Data represents performance of a typical motor sampled from a large production quantity. Individual motor data may vary to normal manufacturing variations.

Test Specs: 120 volt	Minimum Sealed Vacuum: 130"	ORIFICE: 7/8"	Minimum Vacuum: 58"	Maximum Watts: 2060
-----------------------------	------------------------------------	----------------------	----------------------------	----------------------------

DIMENSIONS

NOTES:

1. POWER LEADS: 18GA STRANDED, LEADS CAN BE ANY COLOR EXCEPT GREEN OR GREEN WITH YELLOW STRIPE. GROUND LEAD: 18GA STRANDED, GREEN OR GREEN WITH YELLOW STRIPE.
2. MOTOR IDENTIFICATION: MANUFACTURER'S NAME, MODEL NUMBER, VOLTAGE, FREQUENCY, INSPECTOR'S CODE WITH "FF" SUFFIX, DATE OF MANUFACTURE, AGENCY RECOGNITION CODE, PLANT LOCATION CODE, PATENT INFORMATION "ONE OR MORE OF THE FOLLOWING PATENTS APPLY TO THIS MOTOR: 5482378; 5736805; 4669952; 4684835; 6561772", AND COUNTRY OF ORIGIN.
3. ALLOW 10.0016 TO 11/2.5 SO IN. MIN. FOR COOLING AIR INTAKE.
4. COOLING AIR INTAKE MUST BE SEPARATED FROM COOLING AIR EXHAUST.
5. VACUUM EXHAUST MUST BE SEPARATED FROM COOLING EXHAUST.
6. MOUNTING MUST NOT RESTRICT THIS DIAMETER.



IMPORTANT NOTE: Pictorial and dimensional data are subject to change without notice. Contact factory for current revision levels.

WARNING - When using AMETEK/Lamb Electric bypass motors in machines that come in contact with foam, liquid (including water) of other foreign substances, the machine must be designed and constructed to prevent those substances from reaching the fan system, motor housing and electrical components. Lamb vacuum motors other than hazardous duty models should not be applied in machines that come in contact with dry chemicals or other volatile materials. Failure to observe these precautions could cause flashing (depending on volatility) or electrical shock which could result in property damage and severe bodily injury, including death in extreme cases. All applications incorporating Lamb motors should be submitted to appropriate organizations or agencies for testing specifically related to the safety of your equipment.

AMETEK Dynamic Fluid Solutions
www.ametekdfs.com