



Dynamic Fluid Solutions

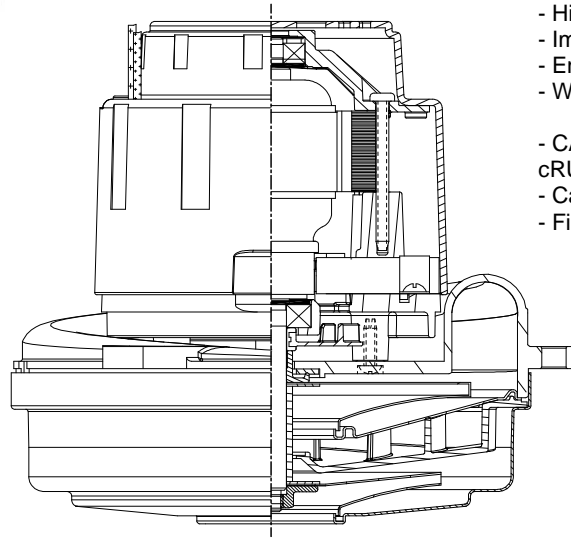
Model: 122622-07

SPECIAL FEATURES

- 2000+ hours life
- High Efficiency Motor/Fan
- Improved Cooling System
- Enhanced II Bearing Protection
- With Plug connector
- CAN & US UL recognition marked cRUus
- Categories PRGY2/PRGY8
- File #s E47185 & E56617 (Class B)

DESCRIPTION

- 36 volts DC
- Two-stage tapered fan
- 6.6" / 162 mm diameter
- Improved sound quality
- "True" tangential discharge bracket
- High-Efficiency "Galaxy" lamination
- Double ball bearings; 10mm output



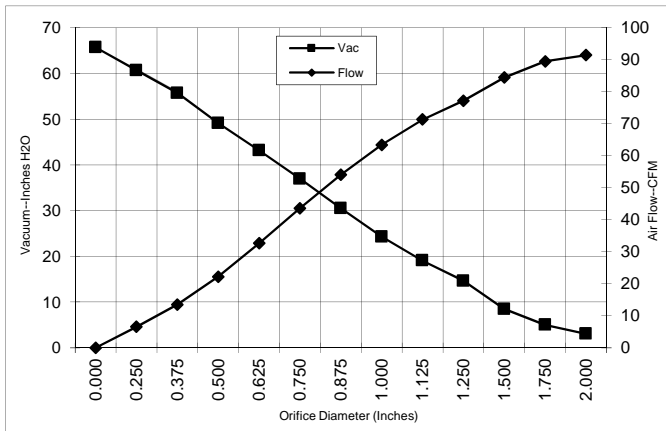
DESIGN APPLICATION

- Equipment operating in environments requiring separation of working air from motor ventilating air
- Designed to handle clean, dry, filtered air only

TYPICAL MOTOR PERFORMANCE.*

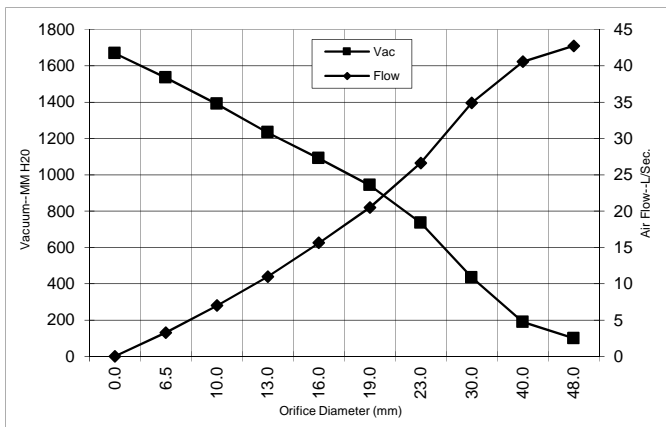
(At 36 volts DC, test data is corrected to standard conditions of 29.92 Hg, 68° F.)

ASTM DATA



Orifice (Inches)	Amps	Watts (In)	RPM	Vac (In.H2O)	Flow (CFM)	Air Watts
2.000	15.5	561	15245	3.0	91.4	33
1.750	15.6	563	15212	5.0	89.5	53
1.500	15.6	565	15148	8.5	84.4	84
1.250	15.6	565	15156	14.6	77.2	132
1.125	15.5	562	15230	19.1	71.3	160
1.000	15.7	566	15146	24.3	63.4	181
0.875	15.6	565	15193	30.5	54.1	193
0.750	15.2	551	15417	37.0	43.6	189
0.625	14.6	527	15876	43.2	32.7	165
0.500	13.6	492	16554	49.1	22.2	128
0.375	12.6	457	17464	55.7	13.5	88
0.250	11.5	418	18369	60.7	6.6	47
0.000	10.9	393	19285	65.7	0.0	0

METRIC DATA



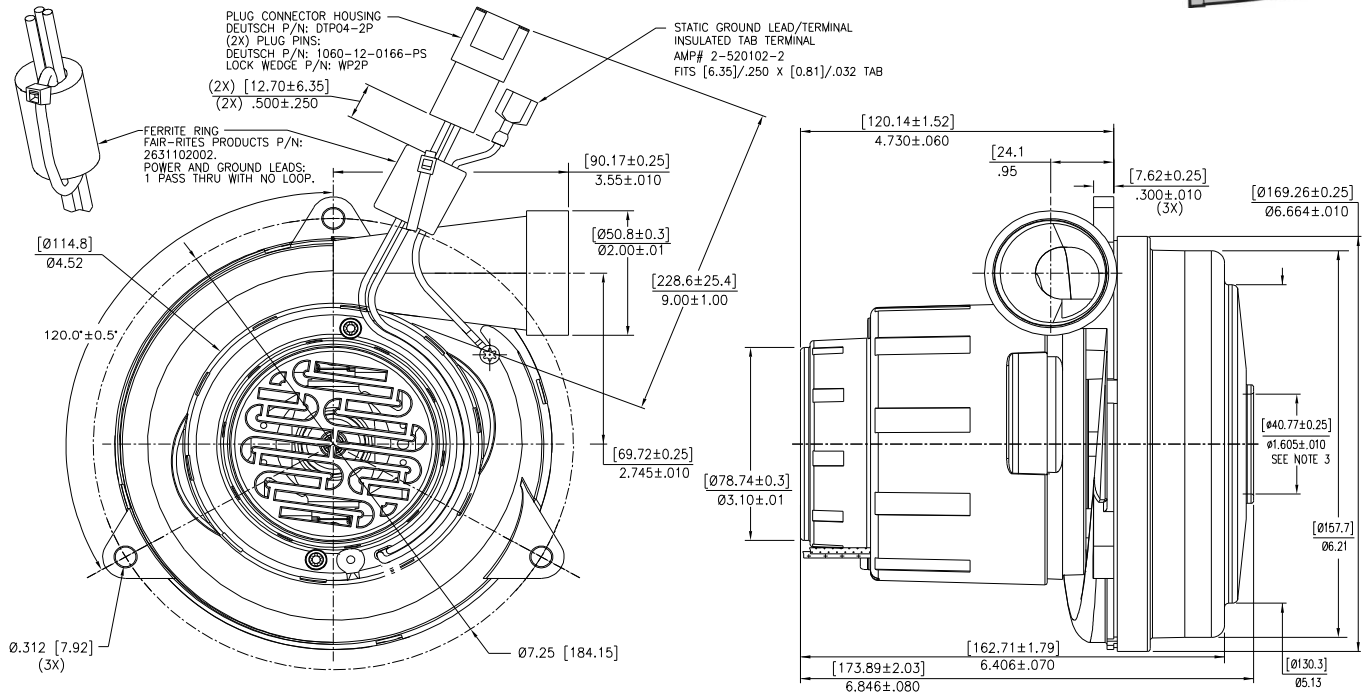
Orifice (mm)	Amps	Watts (In)	RPM	Vac (mm H2O)	Flow (L/Sec)	Air Watts
48.0	15.6	562	15230	99	42.7	41
40.0	15.6	564	15167	189	40.6	75
30.0	15.6	564	15197	433	34.9	147
23.0	15.6	565	15181	735	26.6	190
19.0	15.2	551	15426	942	20.5	189
16.0	14.6	528	15858	1090	15.6	166
13.0	13.7	496	16486	1233	11.0	132
10.0	12.8	462	17328	1390	7.0	94
6.5	11.6	420	18324	1535	3.3	49
0.0	10.9	393	19285	1669	0.0	0

Note: Metric Performance data is calculated from the ASTM data above.

* Data represents performance of a typical motor sampled from a large production quantity. Individual motor data may vary due to normal manufacturing variations.

Test Specs:	36 VDC	Minimum Sealed Vacuum: 57"	ORIFICE:	7/8"	Min. Vacuum: 27"	Maximum Watts:	610
-------------	--------	----------------------------	----------	------	------------------	----------------	-----

DIMENSIONS



NOTES:

1. LEADS: 12GA. STRANDED, POWER LEADS BLACK.
2. MOTOR IDENTIFICATION: MANUFACTURER'S NAME, MODEL NUMBER, VOLTAGE, FREQUENCY, INSPECTORS CODE WITH "JF" SUFFIX, DATE OF MANUFACTURE, AGENCY RECOGNITION CODE, PLANT LOCATION CODE, PATENT PENDING AND COUNTRY OF ORIGIN.
3. MOUNTING MUST NOT RESTRICT THIS DIAMETER.
4. ALLOW [0.0026 SQ M]/4.0 SQ IN. (MIN.) FOR COOLING AIR INTAKE.
5. COOLING AIR INTAKE MUST BE SEPARATED FROM COOLING AIR EXHAUST.
6. COOLING AIR EXHAUST MUST BE SEPARATED FROM VACUUM EXHAUST.

IMPORTANT NOTE: Pictorial and dimensional data are subject to change without notice. Contact factory for current revision levels.

WARNING - When using AMETEK Floorcare & Specialty Motors (F&SM) bypass motors in machines that come in contact with foam, liquid (including water), or other foreign substances, the machine must be designed and constructed to prevent those substances from reaching the fan system, motor housing, and electrical components. F&SM vacuum motors other than hazardous duty models should not be applied in machines that come in contact with dry chemicals or other volatile materials. Failure to observe these precautions could cause flashing (depending on volatility) or electrical shock which could result in property damage and severe bodily injury, including death in extreme cases. All applications incorporating F&SM motors should be submitted to appropriate organizations or agencies for testing specifically related to the safety of your equipment.

AMETEK/Dynamic Fluid Solutions
www.ametekdfs.com

Revised February 2018