



AMETEK
LAMB ELECTRIC



Product Bulletin

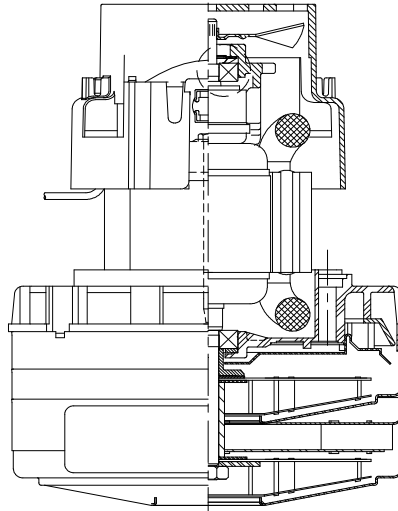
Model: 122556-00

DESCRIPTION

- Double stage
- 240 volts
- 5.7"/ 145 mm diameter
- Dual ball bearings
- Single speed
- Acustek bypass discharge
- Thermoset fan end bracket
- Thermoset commutator bracket

DESIGN APPLICATION

- Equipment operating in environments requiring separation of working air from motor ventilating air
- Designed to handle clean, dry, filtered air only



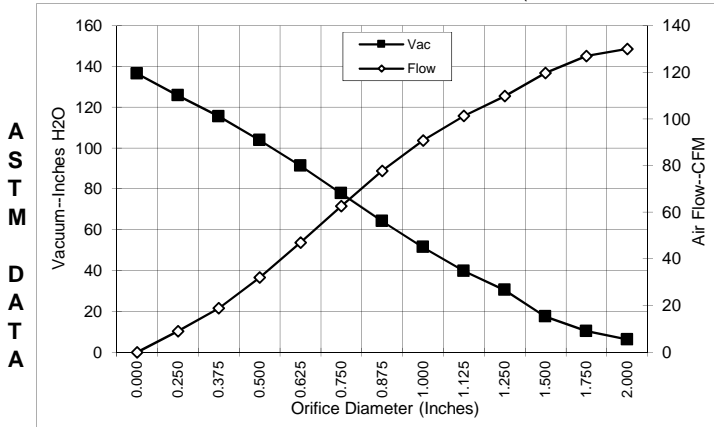
SPECIAL FEATURES

- Suitable for 240 volt AC operation, 50/60 Hz
- UL recognized, category PRGY2 (E47185)
- Provision for grounding
- Skeleton frame design
- Tapered fan system
- The Lamb vacuum motor line offers a wide range of performance levels to meet design needs

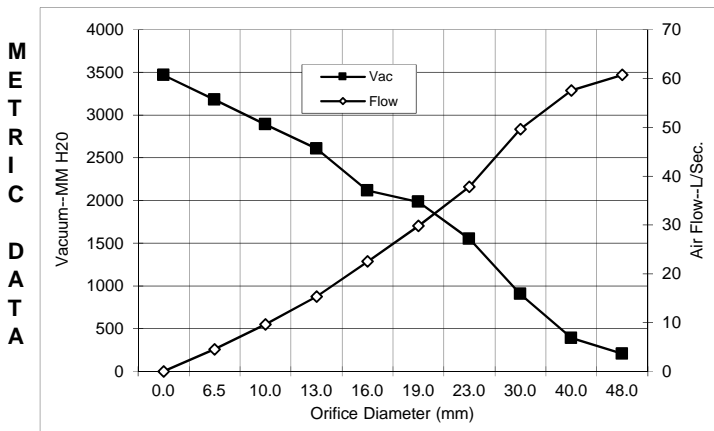
PEAK AIRWATTS
588
Calculated in accordance with ASTM F2105

TYPICAL MOTOR PERFORMANCE.*

(At 240 volts, 60Hz, test data is corrected to standard conditions of 29.92 Hg, 68° F.)



Orifice (Inches)	Amps	Watts (In)	RPM	Vac (In.H2O)	Flow (CFM)	Air Watts
2.000	7.7	1728	23853	6.3	130.0	96
1.750	7.7	1732	23793	10.3	126.9	154
1.500	7.7	1735	23774	17.4	119.7	245
1.250	7.7	1739	23753	30.4	109.7	392
1.125	7.7	1728	23782	39.8	101.3	473
1.000	7.6	1705	23922	51.5	90.8	548
0.875	7.5	1679	24106	64.2	77.7	585
0.750	7.1	1612	24600	77.8	62.6	571
0.625	6.7	1505	25390	91.4	47.0	504
0.500	6.1	1389	26501	103.9	32.0	390
0.375	5.3	1218	27941	115.4	18.9	256
0.250	4.8	1096	29479	125.7	9.0	133
0.000	4.3	998	30744	136.5	0.0	0



Orifice (mm)	Amps	Watts (In)	RPM	Vac (mm H2O)	Flow (L/Sec)	Air Watts
48.0	7.7	1729	23826	205	60.7	121
40.0	7.7	1734	23780	389	57.5	218
30.0	7.7	1733	23769	904	49.6	437
23.0	7.5	1685	24060	1549	37.8	515
19.0	7.1	1610	24615	1982	29.8	528
16.0	6.7	1509	25358	2115	22.5	470
13.0	6.1	1401	26390	2606	15.3	401
10.0	5.4	1244	27725	2888	9.6	276
6.5	4.8	1102	29402	3180	4.5	140
0.0	4.3	998	30744	3466	0.0	0

Note: Metric performance data is calculated from the ASTM data above.

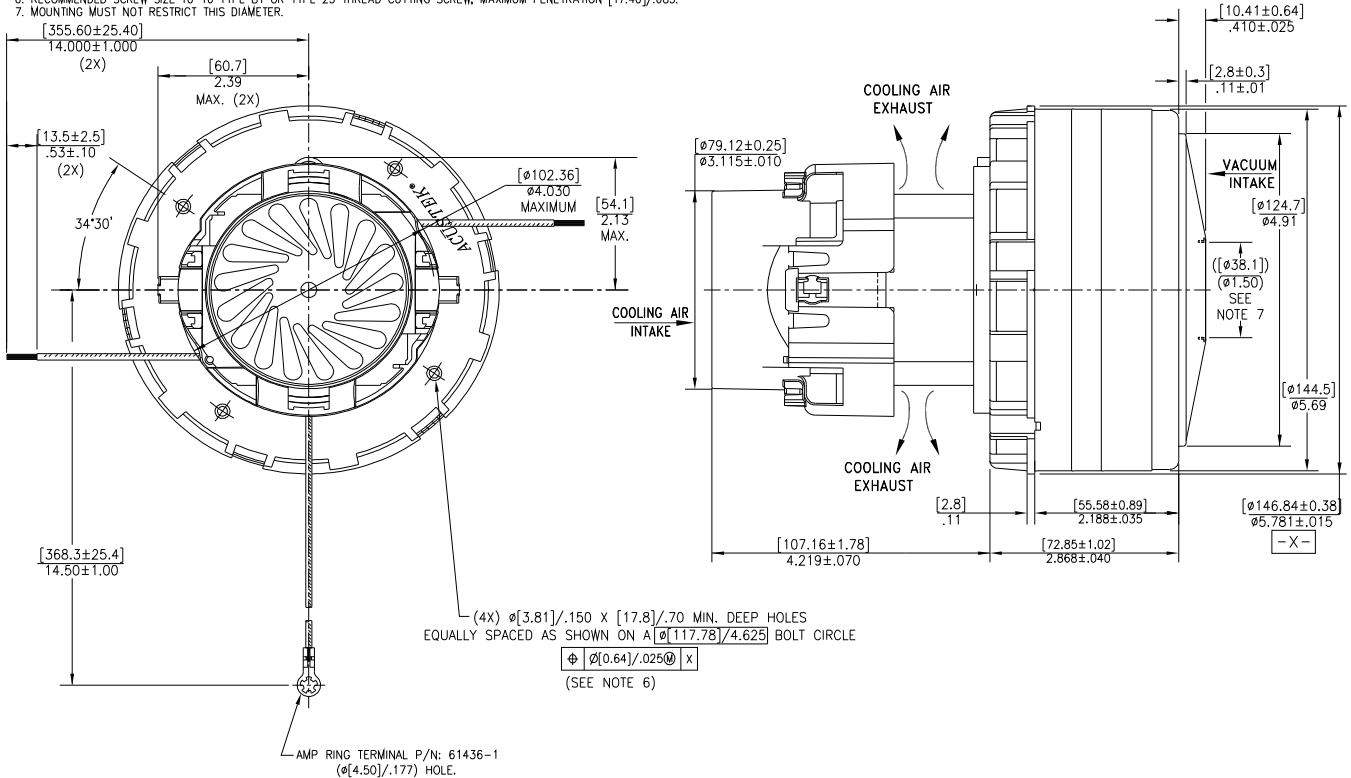
* Data represents performance of a typical motor sampled from a large production quantity. Individual motor data may vary to normal manufacturing variations.

Test Specs:	240 volt	Minimum Sealed Vacuum: 76	132"	ORIFICE: 7/8"	Minimum Vacuum: 59"	Maximum Watts: 1837
--------------------	----------	---------------------------	------	---------------	---------------------	---------------------

DIMENSIONS

NOTES:

1. POWER LEADS: 18GA STRANDED, LEADS CAN BE ANY COLOR EXCEPT GREEN OR GREEN WITH YELLOW STRIPE.
GROUND LEAD: 18GA STRANDED, GREEN OR GREEN WITH YELLOW STRIPE.
2. MOTOR IDENTIFICATION: MANUFACTURER'S NAME, MODEL NUMBER, VOLTAGE, FREQUENCY, INSPECTORS CODE WITH "FF" SUFFIX, DATE OF MANUFACTURE, AGENCY RECOGNITION CODE, PLANT LOCATION CODE, PATENT INFORMATION "ONE OR MORE OF THE FOLLOWING PATENTS APPLY TO THIS MOTOR: 5482378; 5736806; 4669952; 4684835; 6561772". AND COUNTRY OF ORIGIN.
3. ALLOW [0.0016 SQ M]/2.5 SQ IN. MIN. FOR COOLING AIR INTAKE.
4. COOLING AIR INTAKE MUST BE SEPARATED FROM COOLING AIR EXHAUST.
5. VACUUM EXHAUST MUST BE SEPARATED FROM COOLING EXHAUST.
6. RECOMMENDED SCREW SIZE 10-16 TYPE BT OR TYPE 25 THREAD CUTTING SCREW, MAXIMUM PENETRATION [17.40]/.685.
7. MOUNTING MUST NOT RESTRICT THIS DIAMETER.



IMPORTANT NOTE: Pictorial and dimensional data are subject to change without notice. Contact factory for current revision levels.

WARNING - When using AMETEK/Lamb Electric bypass motors in machines that come in contact with foam, liquid (including water) of other foreign substances, the machine must be designed and constructed to prevent those substances from reaching the fan system, motor housing and electrical components. Lamb vacuum motors other than hazardous duty models should not be applied in machines that come in contact with dry chemicals or other volatile materials. Failure to observe these precautions could cause flashing (depending on volatility) or electrical shock which could result in property damage and severe bodily injury, including death in extreme cases. All applications incorporating Lamb motors should be submitted to appropriate organizations or agencies for testing specifically related to the safety of your equipment.

AMETEK/Floorcare & Specialty Motors
www.ametekfsm.com